



# Positively MANIOTOTO!



Download from [www.maniototo.co.nz/contacts-links](http://www.maniototo.co.nz/contacts-links)

March 2019

## MANIOTOTO A & P SHOW

Janine Smith

The Maniototo was 'abuzz' at the Maniototo A&P Show. The Horticultural and Industry section was themed "Birds, bees and butterflies".



On duty at the show are Tony Steele, Margot Hall, Janine Smith and Craig Paterson.

It turned out to be a scorcher of a day, after a cooler start, making the fire brigade's water slide very popular for the youngsters.



Josie and Rosa Herlihy enjoyed the bee display by Anna Pettigrew.

Horse and pony entries were on a par with last year. Sheep numbers were up by about 70 thanks to the Suffolk breed nominating our show as their feature show this year. It was great to see the sheep pens nearly at capacity. Fleece entries were back by about 10.



Johnny Girvan, Meehan/Davie family on pony Ataahua Enchanting, Penelope Johnson, Anne Crutchley and Celia Shrimpton. The pony was won The champion present pony of the show which was sponsored by Johnny and Rural livestock and went on to win supreme pony and supreme paced and mannered pony.

Full article and results continues on page 4

## HOSPITAL REUNION

In November, a small group of past and present employees of Maniototo Health Services thought it would be a great idea to have a get together, especially with the new Hospital rebuild about to open its doors this year.



The Maniototo Hospital, Chalet and Medical Centre celebrated with a reunion on the 23<sup>rd</sup> February at the Maniototo Park Stadium. One hundred and forty attended, including past Registered and Enrolled Nurses and Aides, Physios, Plunket nurses, St John personal, Radiographers, Doctors and ex Matrons, present staff, Board of Trustee members, District Health Board members, volunteers, and administrators.



Terry and Shona McCloy, Sylvia Carson, Denise Baddock, Joanne Paterson and Val McSkimming on duty taking registrations on the day.

Many travelled great distances, old and new mingled and chatted, laughter abounded with stories and memories of the past decades of health services in the Maniototo. Informal speeches, cake cutting, luncheon and photos were the order of the day. Guests were taken on a tour of the new hospital and west end of the current hospital (Medical Centre). The tour proved very



Gerald Dowling and Natalie Bruhns are all smiles at the Maniototo Chalet and Medical Centre reunion.

Full article and more images continues on page 17



**Positively  
MANIOTOTO!**

## FORWARD PLANNING - MARCH 2019

Proudly produced and distributed by Burn729am/87.9fm

SUNDAY	MONDAY	TUESDAY	WEDNESDAY	THURSDAY	FRIDAY	SATURDAY
31					1	2
3	4	5	6	7	8	9
10	11	12 2020 Cavalcade meeting (pg 3)	13	14 Maniototo Netball AGM (pg 3)	15 ► Hospital open day (pg 3) ► Friends of the Hospital Meeting (pg 3)	16
17	18 Dental Bus arrives in the Maniototo	19	20 ► Travel Talk (pg 14) ► Business breakfast	21 Southern Trust function (pg 16)	22	23 Arts Centre Open day (pg 10)
24	25 <b>OTAGO ANNIVERSARY DAY</b>	26	27	28	29 Field Day (pg 14)	30 MAS Formal

### KERBSIDE COLLECTION

Ranfurly, Naseby

- Blue lid bin (glass only)
- Red lid bin (household rubbish)
- Yellow lid bin (plastic and paper)

### Burn729am/87.9fm - Ranfurly

Local news, local weather, text requests  
and evening shows.

Reach local listeners with advertisements (custom  
recorded in our fully kitted out sound studio).

444 9729, 027 287 6729 email: burn@scorch.co.nz

## APRIL 2019

SUNDAY	MONDAY	TUESDAY	WEDNESDAY	THURSDAY	FRIDAY	SATURDAY
	1	2	3	4 Garden Club Meeting (pg 3)	5	6 Orchestra Performance (pg 10)
7 Daylight saving starts ► Hayes Operating Day (pg 5)	8	9	10	11	12 Last Day School Term 1	13 Country Dance (pg 13)
14	15	16	17 ► Travel Talk (pg 14) ► Business breakfast	18	19 <b>GOOD FRIDAY</b>	20
21 ► Naseby book sale (pg 3) ► Naseby Golf Tournament (pg 3)	22 <b>EASTER MONDAY</b>	23	24	25 <b>ANZAC DAY</b>	26	27
28	29 School Term 2 begins	30				

## **POSITIVELY MANIOTOTO** **Community Notice Board**

### **THANK YOU**

On behalf of Roy, Jeanine and Kimberley, we sincerely would like to thank the Maniototo community for all the support you have shown us since the loss of Heather.

The Maniototo Pakeke Lions Club wishes to thank you very much for your generous sponsorship towards our Annual Bowling Tournament held in early January.

The event was very successful with 72 players participating and, with your help, we were able to make a donation of \$3000 to the Otago Helicopter Trust. This total Included \$1200 from our Potato Competition.

The Tournament was won by Joan Levido, John Levido, Bill Carson and Sylvia Carson, 2nd was Bruce Walker's Team from Omakau, 3rd was Morrie and Joan Pringle, Ewan Kirk and Tania Nixon and 4th was Anne Cotton, Doneela Hore, N.Tisdall and Judy Elder.

Kindest regards, Neville Wahrlich, Tournament Organiser.

### **OP SHOP HOURS**

The Catholic Women's League second hand store is located at the rear of the Centennial Milk Bar building on Charlemont Street, Ranfurly. It is Wednesday and Fridays, 10.30 until 4.30. We thank everyone for your donations to the Op shop and would appreciate good clean clothing. We do not take items of furniture.

### **THE CENTENNIAL GALLERY**

The Centennial Gallery is now open from 11.00am to 3.00pm, seven days a week (volunteer availability permitting). Experience a slice of life in the Maniototo. All very welcome. Entry is only a gold coin donation.

### **FRIENDS OF THE HOSPITAL**

The next Friends of the hospital meeting is on Friday the 15<sup>th</sup> March 2019 at Hospital. Apologies to Liz 027 272 3658 or Joyce 444 9225.

### **MANURE NEEDED**

The Maniototo Pakeke Lions are running low on manure so if anyone has some they can use in their fundraising efforts please contact Denis Murcott, Pakeke President on 444 9594.

### **2020 CAVALCADE PLANNING**

The first meeting for Patearoa 2020 Cavalcade for all interested in helping, come along on Tuesday the 12<sup>th</sup> of March, 6.30pm at the Patearoa Pub,

### **MANIOTOTO NETBALL CLUB AGM**

Maniototo Netball Club AGM will be held on Thursday the 14<sup>th</sup> of March at the Maniototo Area School Learning Centre. Any women interested in wanting to play this year, please attend or let Jenna Huddleston know on 027 537 9470.

### **BALLET ON THURSDAYS**

Ballet classes are available for children aged three through to eighteen year olds every Thursday during School term dates. Ph Jemma Robertson 027 314 6595. 3pm - 7.30pm depending on age group. Held in the Maniototo Community Arts Centre.

### **GARDEN CLUB**

**APRIL 4<sup>th</sup>** Maniototo Garden Club meeting will be held on 4<sup>th</sup> April in the Art Centre, Reade St. at 7.30pm. Pete Lowen will be speaking on Bees/honey production. There will also be a competition for the best recipe containing honey. Enquiries Mary Wright 444 9435

### **HOSPITAL OPEN DAY**

The MHS Ltd, Board of Trustees invite the public to an open day of the hospital rebuild - Friday 15<sup>th</sup> March, 1 - 5pm. All welcome.

**Registered Valuer resident in Ranfurly seeks insurance valuation and associated work.**

Email: [pete.mcevoy@farmside.co.nz](mailto:pete.mcevoy@farmside.co.nz)

**Ph 027 767 0289**



**OFS Insurance Brokers**

Locally owned



**Hunter Stevenson**  
Insurance Broker

**Need Personal Non-biased Insurance Advice for ...**

Your farm or business?  
Your home and contents?  
Your life and health? Your income protection?

OFS Insurance Brokers are locally owned and managed insurance specialists offering personal advice and a no-obligation chat about your insurance needs.

**Call Hunter today**

p: 034716800  
f: 034717466  
m: 027 438 1288  
e: [hstevenson@ofs.net.nz](mailto:hstevenson@ofs.net.nz)

## Continued from front page

Trade entries were down a bit so we have some work to do to build this area back up again. BX Foods turned up with a really flash custom built trailer from which they did boning demonstrations and served up scrumptious examples of the meat they source from local farmers. I was particularly happy that they were placed near the secretary's caravan!

Guest speaker was Geoff Smith, head of the Royal Agricultural Society of NZ. It was really valuable to have him there on the day for advice and new ideas.

Everything ran really smoothly - friendly judges, compliant stewards and heaps of helpers, what more could you ask for.

As we try to reduce postage costs memberships, invoices, receipts etc will become electronic for the next show. Therefore we need to update your details and add your email address to your profile. Please send an email to [Maniototoshow@gmail.com](mailto:Maniototoshow@gmail.com) stating your name, address and email address.

## HORSE AND PONY

**Champion led adult hack - Supreme champion led hack and Supreme paced and mannered hack** - Tracy Crossan/Trevalda Mountain Storm

**Champion led youngstock hack** - Liane Crutchley/Tyanee Third Time Lucky

**Champion hack** - Sarah Stalker/Spektakular

**Champion novice saddle hunter** - Jack Cormack/Tui

**Champion saddle hunter pony > Reserve** - Maggie Dowling/Colour My World I

## WOOL

**Supreme champion fleece and Champion fine wool fleece** - Eric Laurenson

**Champion crossbred fleece and Champion Romney stud fleece** - Duncan Elliot

**Champion fine wool stud fleece** - Armidale Merino Stud

**Champion crossbred flock fleece** - Brian McSkimming

**Most points in wool** - Armidale Merino Stud

## SHEEP

**Champion Merino ram and Champion Merino ewe** - Armidale Merino Stud

**Champion Romney ram** - Janine Smith

**Champion Romney ewe** - JJ Mulholland

**Champion Suffolk ram** - Dry Creek

**Champion Suffolk ewe** - Nick Clarke

**Champion Dorset Down ram - Champion Dorset Down ewe** - and **Champion Purebred Down ram** - Johnny Duncan

**Champion Purebred Down ewe** - Sam Stevens

**Champion Texel ram and Champion Texel ewe** - HM & MW Wright

**Prime lamb** - Tim O'Neill

**Supreme champion ram** - Janine Smith with a Romney (this sheep was also judged overall supreme sheep of show and overall best exhibit of show)

**Supreme champion ewe** - Armidale Merino stud with a Merino

## HORTICULTURAL AND INDUSTRIAL DIVISION

Results from the Horticultural and Industrial Division (inside the stadium) were:



**Aileen Preston - the winner of the cut flowers, runner up in roses, runner up of jams and preserves with the outstanding entry also. the runner up in the baking and won the overall aggregate points winner. Most classes entered with a whopping 53 entries. Well deserved Overall Winner recipient.**

**Cut Flowers** - Aileen Preston, **Roses** - Kirsty Kinney, **Floral Art** - Norma Francis, **Vegetables** - Kirsty Kinney, **Jams and Preserves** - Helen Keen, **Baking** - Helen Keen, **Chocolate** - Norma Francis, **Industrial and Craft** - Claire Francis and Yvonne Gordon, **Photography** - Francine Hore, **Feature Section** - Ella and Rex Gibson and **Brewing** - Jacqui Aitken. The **Overall winner** was Aileen Preston and **Overall Runner-up**, Helen Keen.

The school prizes were:

**Year 1** - Emily Heckler, **Year 2** - Vanessa Kinney, **Year 3** - Josie Herlihy, **Year 4** - Eddie Weir, **Year**

**5/6** - Lachie Mackenzie, **Year 7/8** - Maia Macdonald and **Year 7/8**

**baking** - Freddie Hore. **The School Shield** went to Maniototo Area School this year. Congratulations everyone.



Grace Paterson and Alexie Mackenzie check out this years featured recipe (Honey snap biscuits) entries.

# JACQUI DEAN

## MP FOR WAITAKI

A black and white portrait of Jacqui Dean, a woman with short blonde hair, smiling.

*Jacqui is in Ranfurly each month.*

Please contact her office if you would like to make an appointment. Jacqui has a member of her team available each week on Monday's 10am - 12pm at Alexandra Resource Centre.

**OAMARU OFFICE:**  
127 Thames St, Oamaru | Ph: 03 434 7325 | 0800 MP WAITAKI  
[waitaki.mp@parliament.govt.nz](mailto:waitaki.mp@parliament.govt.nz) | [www.jacquidean.co.nz](http://www.jacquidean.co.nz)

Funded by the Parliamentary Service and authorised by Jacqui Dean MP, 127 Thames, Oamaru

The logo for National, featuring the word 'National' in a stylized font with a star above the 'i'.

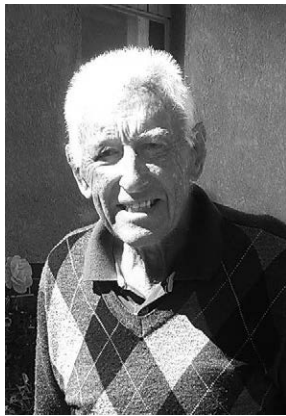
The coat of arms of New Zealand, featuring a shield with a cross and four quarters, topped with a crown.



## SUPER SECRETARY RETIRES

Super Show Secretary, Mr Neville Wahrlich shares his story with Positively Maniototo ...

*"My involvement with A&P Shows began when I came to the Maniototo in 1953 and took up a farm labourers position with the Clarke family at Patearoa who had a Corriedale (sheep) and Shorthorn (cattle) stud so A&P Shows were attended regularly.*




*Later, with family growing up two of my daughters had horses and ponies and along with the Elder and Skinner families we would take the girls to Palmerston, Middlemarch, Omakau and Wanaka shows so, obviously, I soon found out about the way A&P shows were run.*

*In 1965 I applied for and received a position as a stock agent with Donald Reid & Co. and shifted to Heriot where we lived for three years and then I was transferred to Palmerston where we spent four years and after that we returned to Ranfurly as a lamb drafter with P.P.C.S.*

*In 1973 Mrs.J.Steele who was Secretary of the A&P Association at the time decided to retire from the position. Having been involved with shows over the years I thought I might as well put my name forward for the Secretary's job. Up until that time, the longest serving Secretary was J.N.Macassey who, oddly enough, was also a representative of Donald Reid and Co.*

*I did enjoy the Secretary's position, so I just kept putting my name forward for re-election each year. However, as age was catching up on, me I thought that I had better pass on my knowledge to someone else before it was too late. I believe that I was one of the few male Secretary's of A&P Shows left throughout N.Z.*

*Fortunately, the association found a keen re-placement and I am confident that Janine Smith will do a wonderful job as her farming background and knowledge of modern technology will help make the position a little easier.*



**Did you know the correct speed when driving past a stationary school bus is**

20  
kph

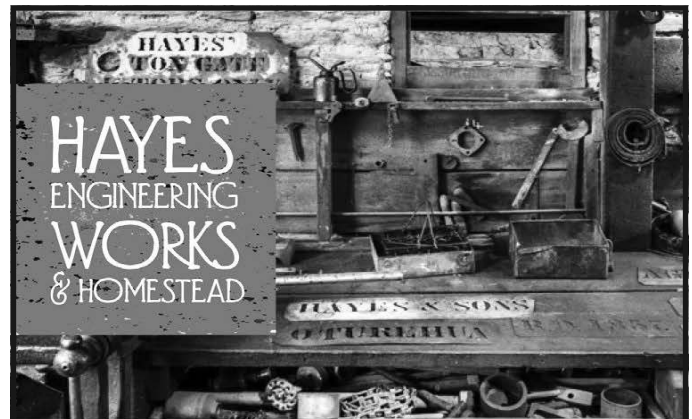
**This applies to vehicles passing in both directions.**

## NASEBY GOLF CLUB.

Easter Ambrose Tournament. Will be held on Sunday the 21<sup>st</sup> of April . Tee off is at 12.30pm. Entry fee \$20.00. Food to follow. All welcome.

## NASEBY EASTER BOOK SALE

This is a fundraiser for Naseby Information Centre. Being held at the Naseby Fire Brigade Rooms. Sunday April 21<sup>st</sup>. 1pm to 3pm. Good selection of fiction, children's books and jigsaws. ALL BOOKS ONLY \$1.00.



JOIN US ON A 'LIVE'  
OPERATING DAY IN 2019

**7 April**

Marvel at a fully operational turn of the 20th century engineering workshop and 1920s villa... and discover how genuine kiwi ingenuity and resourcefulness led to a remarkable home-grown industrial design that is still in use today!


*Rewire on a Hayes Roast Coffee, enjoy our café delights and gift shop.*




HERITAGE NEW ZEALAND  
POUHERE TAONGA

03 444 580139 Hayes Rd, Oturohua, Ida Valley  
[www.hayesengineering.co.nz](http://www.hayesengineering.co.nz)

2120023



**Maniototo Four Square**  
Open 7 Days  
03 444 9021



**Café - Coffee - Food**

03 444 9023  
1 Pery St, Ranfurly

# WAIPIATA HALL AND HEATHER BENSON

*Positively Maniototo* was lucky enough to sit down with the late Heather Benson in her home last year to chat about the history of the Waipiata Hall.

Heather lived in Waipiata for most of her adult life and was passionate about local history, community development and literature.

It was Heather who you went to for a key to the local wee Waipiata community library and she served many years on the Waipiata Women's Group and various groups's to support community development.

Heather is survived by her husband Roy and daughters Jeanine and Kimberley.

Thank you also to Jim Sullivan and family for assisting with this article.



When the Waipiata Hotel opened in 1898 it provided an area for use as a public hall and by 1900 proprietor, John Malcolm was offering a *"First-class Hall to Let. Special terms for Theatrical Companies."* The hall was still being called *"McAtamney's Hall"* after original publican Patrick McAtamney who took up the licence again later in 1900 and erected a "new hall" which opened with a free supper.

*"The hall was nicely decorated with evergreens, and at about 8 pm, some 90 guests sat down to supper, which I must say was a splendid one and reflects great credit on the donor."* This hall was in regular use for community events, but in 1916 the old Salvation Army Citadel was brought down from Naseby for use as a public hall - unconnected with the pub.

About the time mining was winding down in Naseby and many buildings were moved to the new "railway" centres, Ranfurly and Waipiata.

Hamiltons was already something of a ghost town and its courthouse had been brought to Waipiata in 1915

and used as a library. In 1985 Jim Hore moved it to Stonehenge where it was restored and now serves as a storage shed.

*"The hall had very few mod-cons,"* said Heather and a new portion including the kitchen, passageway, front porch and toilets, was added in 1958, while the old hall is now the supper room. Heather's husband Roy, and Jack Harvey of Benson and Harvey Builders were the partnership builders.

During both world wars the hall was the venue for farewell and welcome home events for service people and school concerts were also held there.

Local couples were even welcomed home from their honeymoon, as were Russell Tregonning and Ada Hore in 1902. *"It was a great success, friends from all over the district attending to do honour to the happy couple. The proceedings opened with the Grand March, and dancing was kept up with spirit until the early morning."*

Hospital boards held meetings at the hall to discuss sanatorium affairs and throughout the 1920s returned soldiers held an annual ball, while it was also a polling booth at election time.

In 1932 electricity came to the hall when a line was strung across from Alex Booth's garage. A local committee ran the hall, with the 1932 officials being president, R Tregonning; treasurer, Mrs J. Roberts and secretary, Mr C. Wray. Raffles were fundraisers and in 1935 the hall was given a new floor and the interior was repainted.

A local community group held barn dances in the 1990s, people came from near and far and Boxing Day dances were a regular thing after the annual sports day.

The hall supper room has hosted a darts club for many years and there also used to be a rifle club. The main hall is big enough for a full basketball court and it was thought that Waipiata Hall would become the "sporting centre" for Maniototo until the stadium in Ranfurly was built.

The main sale yards for Maniototo were at Waipiata in the lucerne paddock by the hall. The War Memorial angel at Waipiata was replaced in 2010 and the original is now inside the hall. Anzac Day services are held at the memorial and the hall holds a War Memorial board with the names of ex-Waipiata School pupils who served in the First World War.

Many weddings have been held at the hall including the memorable John and Sally Andrews' winter wedding breakfast, community birthdays and dinners are regularly held at the hall which is always available to the community for use. The hall is administered by the Central Otago District Council.



DRILLING ■ DISTRIBUTION  
SINCE 1918

## QUALITY WOOD CHIP DELIVERED TO YOU



■ Wintering sheds ■ Wintering pads ■ Calf sheds ■ Lanes



**Ultimately cows need a clean, dry and comfortable surface to rest on.**

McNeill wood chip is sourced from Niagara Sawmill where they produce clean, quick drying radiata pine chip that is ideal for use in the rural sector.

Not only does radiata pine smell fresh it is naturally hygienic... as like wooden chopping boards have a natural tannin in them that acts as an anti-bacterial agent. Wood chip creates cleaner cows prior to milking and are less susceptible to mastitis.



Wood chip can be washed and dries quickly as air circulates around the chips. This continuous air flow is beneficial in keeping moisture at a minimum.



Moisture is one of several essential factors necessary for bacterial growth in bedding materials. Therefore, it is important to keep bedding as dry as possible to minimise exposure to environmental mastitis pathogens.

Contact Tony Thompson  
03 230 3019 • 027 222 2097  
or Andy Boniface  
03 230 3018 • 027 204 3694

[woodchip@mcneillnz.com](mailto:woodchip@mcneillnz.com)  
[www.mcneillnz.com](http://www.mcneillnz.com)

## CURLING QUALIFIER



Congratulations to the New Zealand's Junior Men's Curling side (Matthew Neilson, Ben Smith, Anton Hood, Hunter Walker and Jayden Apu wai-Bishop (Dunedin)). They achieved their major goal at their first-ever World Championship, which was held in Nova Scotia. Their four wins saw them finish in sixth place overall, allowing them to automatically re-qualify for next year's event and avoid the World Junior "B" qualifier. This is by far the best result for any New Zealand Junior side and, according to New Zealand Curling, "could herald a steep change for New Zealand curling."

## CENTRAL CARS MANFURLY



**\$4995**

### Nissan Navara ute, D21, 1997, 275k's

With Nissan's bullet proof 2.7 diesel. Very tidy condition. Drives well.

#### Maniototo's only licensed used car dealership

With 40 years in the car business, both as a mechanic, selling and importing vehicles. I know what I am doing and stand by my cars 100%. Is there a certain car you are looking for? I can help source any vehicle. Phone me if you have any questions.

**Call Terry on 021 0222 3314**



CHECKETTS MCKAY LAW  
CENTRAL OTAGO

### Checketts McKay Law operating from their Pery Street office

Please call the office on **444 9060** with your enquiries

**Monday – Wednesday 10am – 4pm | Thursday – Friday 9am – 5pm**



**Gillian Clarke**  
(Tuesday)



**Alan Coull**  
(Thursday and Friday)



ANDREW P. HAYES

### BUSINESS AND TAXATION CONSULTANT, OAMARU

Eden Street, Oamaru P.O. Box 168, Oamaru

Telephone: (03) 434 8593 Mobile (027) 221 6343

Fax: (03) 434 8586

Email: [andrew@andrewphayes.co.nz](mailto:andrew@andrewphayes.co.nz)  
at the Maniototo Service Centre Pery Street,  
2nd Thursday each month

## GRAHAM ELECTRICAL LTD

**Contracting, appliance sales and service since 1954**

**Shop 444 9314 Doug 027 438 8380 Rob 027 447 8627 Nic 027 330 4605**

[grahamelectrical@xtra.co.nz](mailto:grahamelectrical@xtra.co.nz)

**Fisher & Paykel  
Appliances,  
Panasonic TVs**

**FUJITSU Haier**  
Fujitsu and Haier air conditioning



## TALE OF THE TREKKA

Marilyn Swinbourn

Of all the unusual, odd, interesting and exotic vehicles parked outside the workshop in the main street of Naseby the battered yellow Trekka was the one passers-by gravitated to. It was regularly photographed, studied, examined in detail and commented on. Seems everyone had an opinion of their usefulness and value.



For most of the past 10 years it was owned by Eric Swinbourn, prior to that Winton Amies had it in his collection. Its first life was as a service vehicle at Momona Airport where (for operational reasons) it was painted yellow and sported a flashing blue roof light.

Trekkas were manufactured in Otahuhu in the late 60s and early 70's with around 2600 produced. They were based on Skoda running gear and fitted with a Skoda

engine. The bodywork and components were manufactured in New Zealand. They came in a range of configurations and were popular with tradespeople, as delivery vehicles and farm vehicles. Skinny knobbly tyres, limited slip diff and good ground clearance meant they could go places in spite of being two wheel drive.

It is thought there are around 20 still registered and many more parked up in barns and backyards awaiting restoration. They have become collectible and quite sought after. The dry atmosphere of Maniototo meant a high survival rate so it's possible there are still some 'barn-finds' tucked away somewhere.

Photo shows the Trekka after being driven on to the trailer for its journey to Motueka where the new owner has plans to restore it.

An advertisement for Steele Fencing Ltd. It features a black and white photograph of a fence in a rural setting with mountains in the background. To the right of the photo is a black box containing white text with the company name, contact details, and services offered.

**STEELE FENCING LTD**

**LUKE STEELE**  
0274859823  
RANFURLY

FOR ALL YOUR FENCING NEEDS  
THROUGHOUT CENTRAL OTAGO

steelefencing@hotmail.com

## Enjoy your lifestyle, knowing your future is secure.

- Clear financial guidance
- Affordable wealth management
- Relationship-based investment advice
- Second opinion review of existing investments
- Savings and Kiwisaver

03 477 9923  
phwealth@ph.co.nz  
phwealth.co.nz

**PolsonHiggs**  
*Wealth Management*

## ORCHESTRAL PERFORMANCE

Step out in style as over 30 members of the Central Otago Regional Orchestra will be performing in the Ranfurly Town Hall (Northland Street) on Saturday 6<sup>th</sup> April at 7.30pm.

CORO (Central Otago Regional Orchestra) started as the pit orchestra for productions by the Alexandra Musical Society. In 1989 these musicians formed the Alexandra Civic Orchestra with Russell Poole, then Mayor of the Alexandra Borough Council, as the first conductor. Russell used his authority as Mayor to allow rehearsals to be held in the Borough Council chambers.

The orchestra was subsequently renamed the Central Otago Regional Orchestra to better acknowledge its geographical spread. Players come from Wanaka, Hawea, Arrowtown, Queenstown, Cromwell, Alexandra, Roxburgh, and Dunedin.

### Ranfurly Performance

**Date:** Saturday the 6<sup>th</sup> of April

**Time:** 7.30pm

**Venue:** Ranfurly Town Hall

**Entry fee:** \$20

**Tickets:** Available from Wednesday 13<sup>th</sup> of March at Janyne Fletcher Photography Gallery, Charlemont Street, Ranfurly. Open 7 days, 10.30am - 2.30pm

## ARTS CENTRE UPDATE

The Maniototo Community Arts Council committee and volunteers have been working very hard to give the Arts Centre in Reade Street a makeover. The Maniototo Community Arts Centre is a very well used facility which deserved to be given a new lease on life and that's exactly what's happening.

Tussock Network has connected the arts centre up with wifi and a sponsored monthly contract. The main work rooms have been lined, jib stopped and painted. A new smart TV on a trolley will be able to be used by groups in any room in a variety of ways including connecting to online workshops, linking to laptops for presentations or googling ideas and techniques. New temporary signage will help give the centre a new fresh look from outside but more signage and improvements outside will be created through continued fundraising efforts.

The Open Day this month (below) is celebrating community creativity and we can confirm performances by the Maniototo Area School Kapa Haka Group, the Karate Club, local ballerinas, stilt walkers and singers. Local artists such as Luke Anthony (bird carver) and Julie Greig (recently moved to the Maniototo from the McKenzie Country) will put on displays and be around to chat. Also enjoy floral creations, the Garden Club and local crafts.



**A day celebrating creativity in our community**

# Arts Centre Open Day

**demonstrations, displays, stalls, performances, food and music.**

**MARCH SATURDAY 23**

**MANIOTOTO ARTS CENTRE READE STREET RANFURLY**

**10AM - 3PM**

**CONTACT AMIE 027 264 3766**

## BURN 729AM/87.9FM

Denise Baddock

A bit of a turn in the weather with cooler temperatures at present, some mornings of late have that definite autumnal feel to them. It's been a busy month for locals and visitors alike with the Maniototo A & P Show, annual Duathlon, Hospital reunion and all the summer sports completing their season. Many soon will be donning the footy boots, grabbing the hockey shin pads or netball and a thermal or two, as we head towards the next round of sporting fixtures and events on the calendar. The NZ curlers in Nova Scotia are doing us proud again with some great wins under their belts, placing 6<sup>th</sup> and, therefore, qualifying for next years' event (see page 8).

Upcoming event to look out for, is the live 'Hayes Engineering' Workshop open and operational days, including the homestead and Café with Bluegrass music to set the scene. They are open again on the 7<sup>th</sup> April. Well worth a visit and the tutorials given are informative and fascinating. (See page 5)

The 'Arts Centre' in Reade Street, Ranfurly is also having an open day 'Celebrating Creativity' in the community. After numerous working bees and many man hours. Pop along on the 23<sup>rd</sup> of March between 10am – 3pm and see the displays, demonstrations, food, music and performances on offer (see page 10).

Next month the Central Otago Regional Orchestra will be performing in the Ranfurly Town Hall. Mark Saturday April 6<sup>th</sup>, 7.30pm and see page 10 for more information.

Maia's 'Kid's Hour' is proving popular with listeners and

she has had a great line up of community members in for a chat about their various professions or sporting achievements. Maia joins us every Thursday afternoon between 4 and 5pm here on Burn and after the initial nerves, is gaining her confidence and is quickly following her predecessors of Emily Smith, Willy Miller, Ashleigh Smith and the like.

Remember, if you would like your sports results on air all you need to do is drop them into us here at Burn. A white tray is in the foyer for this or feel free to email your results through. These are read out weekly 'live' on Sunday morning from 9:30am. We would like to take this opportunity to thank our sports round up sponsors McLaren Ranfurly Transport.

To all our sponsors and advertisers if you wish to have a revamp of your ads to update relevant information, products, content or contact details, or are starting a new venture and need to get the word out there, feel free to pop in and have a chat. We have great advertising packages and realistic prices to suit your requirements, it can be on a casual or long term basis, and your support is very much appreciated.

**Burn729am/87.9fm** burn@scorch.co.nz  
444 9729 / 027 287 6729

**Positively Maniototo** amiepont@gmail.com  
027 264 3766

## Keeping it live & local here on the Maniototo' on Burn729am/87.9fm



Gallaway Cook Allan is a premier Otago-based full service law firm.

Contact Devon Miller for all your Private Client needs:

- » Wills and Enduring Powers of Attorney;
- » Estate Administration;
- » Relationship Property; and
- » Trusts and Asset Protection.



03 474 9790  
devon.miller@gallawaycookallan.co.nz  
[www.gallawaycookallan.co.nz](http://www.gallawaycookallan.co.nz)

GALLAWAY  
COOK  
ALLAN  
LAWYERS

Kay and Stephen Dunn  
Travel Brokers



VINCENTGEORGETRAVEL

*For personal and professional travel advice where and when you need it*

Maniototo

Join Stephen and Kay for their monthly travel talk on BURN 729AM/87.9FM

**Wednesday 20 March - 10:15am**

**For all your travel requirements**

**Ph: 444 9132 or 027 522 2389 or 021 100 6718**



kayd@travelmanagers.co.nz or  
stephend@travelmanagers.co.nz



Approved Travel Broker of Travel Managers Group Ltd  
Registered Office: Level 7, 2 Emily Place, Auckland, NZ

# A new era of **broadband service for Central Otago** is coming...

Unifone is extending its Otago network into this area to deliver unlimited high speed internet to your location!

Your wait for fast, reliable broadband is almost over. Unifone's WiFi Broadband service is currently being rolled out across Central Otago, including the Maniototo. Our team of technicians are working to construct a network of modern, high speed radio transmitters that will bring high quality, cost effective broadband to you.

Have a look online at which plan might suit you or give us a call. We have plans for people with simple internet needs, right through to plans that will suit the most demanding of power users. Best of all, our plans come with unlimited data. When you are with Unifone, data caps become a thing of the past.

We own the broadband infrastructure we use to deliver service which means we can be more innovative, flexible and adaptable when providing you with a connection. We can even help with phone lines, broadband and data networking around your farm or business or linking your business to just about anywhere you can imagine.

We're not a 'one size fits all company' and we think you'll like that.



**unifone.net.nz    0800 894 114**



### Watch out for signs of Ergot Toxicity!

We have recently seen a case of ergot toxicity in a mob of young cattle grazing ryegrass pasture in the Maniototo area. Ergot is a naturally occurring fungus which affects grasses and grain. The fungus produces chemicals called alkaloids which cause narrowing of the small blood vessels in the extremities such as ears, tail and feet. The blood flow in these areas becomes restricted and in severe cases can result in gangrene or the hooves and tips of ears or tail falling off.

Initially the animals may show a painful lameness (often confused with other lameness such as footrot), and swelling of the lower legs. Cattle will commonly develop a rough coat, lose weight and show a disinterest in feed.

Treatment involves removing animals from the affected feed and supportive care to manage pain and secondary infections. However once limbs become cold and black, and gangrene appears the damage is irreversible and euthanasia may be required in severe cases.

Ryegrass infected with ergot can be identified by the presence of ergot bodies - long purple/black structures in the place where normal seeds should be.



Baleage/silage/hay should not be made from infected pastures and stock should not be allowed to graze infected seed heads. This means farmers need to:

- Check before putting stock onto pastures
- Check pastures close to cutting time
- Check baleage/silage/hay when it is being fed out and do not feed any that is affected.
- Dispose of any feed containing ergot bodies as the toxins will affect any age of stock. The recommended way to deal with this is to burn affected pastures or feed, not practical at the moment, so pasture areas need to be spelled and then burnt once the fire season opens.

Ergot outbreaks occur sporadically in New Zealand when environmental conditions are suitable. The last widely reported outbreak was in 2017 in the Southland and South Otago areas in dairy cattle being feed silage.

If you think your stock may be affected by ergot toxicity please contact us at the VetEnt Ranfurly clinic on 444-9615

## BLUE GRASS COUNTRY DANCE

Featuring  
**VALLEY  
BLUEGRASS  
BAND  
&  
JORDAN LUCK**

St Bathans Hall

13th April

6pm-11pm

A St Bathans Community association  
fundraising event

**\$60 PER PERSON**

Food and Fun!

**GET YOUR  
DANCING BOOTS  
ON!**

Tickets Available From  
Helena raymond@xtra.co.nz  
Alison Fitzgerald-0272799095

## INSURANCE BROKERS ALLIANCE LTD

### Who are we?

We are a locally controlled and operated  
insurance broking company

**Phone: 03 477 7321**

## FARM INSURANCE, VEHICLES, HOME AND CONTENTS

With over 20 years in the Industry, we can help. Call us for advice.



### Sue Williams

Registered Financial Adviser FSP116012

021 712 606

suel@ibal.co.nz



### Tim Moore

Registered Financial Adviser FSP383966

027 555 8797

tim.moore@ibal.co.nz

Our point of difference is '**SERVICE**',  
Our ethos is '**TEAM**'

## MANIOTOTO ST JOHN UPDATE

Maniototo St John Ambulance are at present recruiting new members to join their dedicated crew.



**St John**

This can be a very rewarding volunteer position, serving your community and helping them when an emergency arises. Full training, uniform and support given to the right person. Rostered shifts, pager system, crewed with friendly trained crew members. Respond from home if in Ranfurly or stay on station while on call. To find out more information regarding this position, give the team leader Glenis Crutchley a call 444 9621 / 027 4375247.

Become a St John Supporter now, individual, couple and families covered for a small annual fee and for peace of mind, forms available at the station if manned or contact Val McSkimming 03 444 9740

**Call now for your  
FREE in-home  
style consultation,  
measure and quote**



**Call your local style consultant,  
Sharyn Scott 027 776 6533**

**0800 808 300  
russellscurtains.co.nz**

**Russells**

*The curtain & blind specialists*



Aotea Electric has an electrician based in the Maniototo providing all manner of servicing, repairs and maintenance to the Manuhirika and Maniototo areas. If you need a local electrician, please call and we'll look after you, without the long delays or huge travel costs. We can fix your appliances, connect your water pump, install your heat pump, wire your shed or anything else you might have. Coupled with our Alexandra based contracting department for bigger jobs, we can cover any electrical job you might have.

**Call Dale on 027 200 1970 or  
dale.bradly@aoteaelectric.co.nz**



**CENTRAL OTAGO  
FARMING FOR PROFIT**

## Mt Burke Station field day

**Friday 29 March 12.45 pm - 5.30 pm**

**Mt Burke Station, 827 Maungawera Valley Road, Hawea**

Topics include:

- **Environmental management** – learn about the work being done to improve environmental outcomes & meet regulatory requirements whilst increasing productivity.
- **Diversification** – opportunities to increase business income and improve resilience through activities that complement the farm system, including manuka honey production.
- **Lifting productivity** – irrigation and hill country development; cropping & grazing management; using KPIs to make data-driven decisions.
- **Marketing** – improving the value of primary products: Te Mana lamb case study & overview of the B+LNZ Environment Strategy.

BYO afternoon tea, drink & 4WD for the farm tour.

BBQ and refreshments kindly sponsored by Te Mana Lamb & PGG Wrightson.

Registration required - contact Theresa Laws: [theresa.laws@beeflambnz.com](mailto:theresa.laws@beeflambnz.com); 03 477 6634.

## Ranfurly

**CYDECTIN<sup>®</sup>  
Pour-On**

**15 Litre Gun Pack +  
BONUS 2 litre  
OUR PRICE \$1799.00**



**Nil Meat/Nil Milk  
Withhold**

**Ask about our large  
farm deals**

ARB 6203

**By the Big  
Blue Cross**



**Veterinary Centre  
Phone 03 444 1020**

## OUT AND ABOUT



Sunday morning Burn 729am announcer Tony Love (left) took some time out from driving for McLaren's Ranfurly Transport to back up drive for the 'Hoofing It To Hawea' Cavalcade. Tont is pictured with Michael Bloxham (Milton), Wendy Knowler (nee Hunter), Wendy Crawford (Head 'gopher' from Oamaru) and Susan Keene (Maungatua) at the top of the Crown Range. They are on Les Beattie Trail.



Charlie Hore, Kim Vowels, Simon Hore and Hamish Mackenzie help out the Maniototo PTA catering fundraiser on the Hawea Cavalcade.

# AWS LEGAL

One firm  
Full service  
Delivered exceptionally

AWS Legal, situated at 77 Centennial Avenue, Alexandra.

Dave Gibson is always happy to meet with his client base, at home or at the office. Dave deals with all clients in his efficient and practical way,



Dave Gibson

bringing with this the outstanding expertise of 30 plus years in the law business. It has been a pleasure meeting with clients during this year, and Dave has appreciated being introduced to new faces, and being involved in the wider Maniototo Community.

For further information, please visit our Website on [www.awslegal.com](http://www.awslegal.com)

The Alexandra office number is **03 440 0026** or to contact **Dave Gibson** direct **027 688 7332**



A tree in Naseby shows a clear lightning strike scar after a storm in the Maniototo on Wednesday 27<sup>th</sup> February. The damage appears to be on the surface and the tree is likely to survive. It's health will be closely watched for the next few weeks.

## A'COURTS FIREWOOD

Ph: (03) 444 9012 or  
(027) 430 7969

DRY pine, oregon and  
blue gum available  
now



## Central Otago Sheep Handling Ltd

For all your:

Conveyoring, Drenching,

Dipping, Tailing requirements

**Sam Pringle 0273844393 - Ranfurly**

**Locally owned and operated in the Maniototo.**

Casual workers also available so, if you need help on the farm, call now for a quote.



## OUT AND ABOUT CONTINUED



The Highland Barbershop Chorus and Quartet perform in Naseby Town Hall last month.. A bonus performance by Phil Corfield (singing his new song 'Naseby') and Jock Scott and co with bagpipes entertained one and all.



Front to back: Craig Sherson, Phil Flanagan, Neil Rout (with road works crew) hold up a plastic sheet to protect the All Nations Store building in Naseby, currently under refurbishment, from tar splatter from the road works .



Gallaway Cook Allan is a premier Otago-based full service law firm.

Contact Nathan Adams for all your Agribusiness needs:

- » Farm conveyancing;
- » Property related work including Subdivisions, Leases and Easements;
- » Succession Planning; and
- » Corporate work including syndicates.

03 474 6725

nathan.adams@gallawaycookallan.co.nz

[www.gallawaycookallan.co.nz](http://www.gallawaycookallan.co.nz)



**GALLAWAY  
COOK  
ALLAN**  
LAWYERS



Along with



.....invites you to join us for a function to mark the transition from Southern Victorian Charitable Trust Inc to The Southern Trust.

Southern Victorian Charitable Trust operated in the Maniototo for approx. 13 years and over that time have given approximately \$900,000 to local organisations.

The Chair of The Southern Trust Evan Moore and Steve Bennett the National Grants Manager will be attending. Jocelyn and Mearl will be attending from Southern Victorian Charitable Trust Inc.

**When:** The 21<sup>st</sup> of March 2019

**Time:** 5:00pm to 6:30pm

**Where:** The Ranfurly Hotel

**RSVP:** [jocelyn@tst.org.nz](mailto:jocelyn@tst.org.nz)

### Grants Information:

The National Grants Manager, Steve Bennett will be available from 4pm on the 21<sup>st</sup> of March to answer any questions you might have about grants including the application process and available funding.



## Vetlife Ranfurly

Vetlife Ranfurly service a large range of clients throughout the Maniototo area.

Our locally based vet and technician are always available to help with your production, lifestyle or companion animal health requirements. Pop in for a chat or give us a call on 03 444 9700 to see how we can help you and your animals.



8 Northland Street Ranfurly





## Continued from front page

popular with high praise given for the concept, design, decor and pending upgrade for the new Medical Centre and wished everyone involved with health care in the Maniototo the very best for the future.



Mary Condon, Robin Moore and Linda Varcoe.



Ruth and Ian Smith (ex-hospital board member) enjoy the reunion dinner in the Maniototo Stadium.



Sue Dalglish and her Mother-in-law Kay Dundass



Diane Byrne (enrolled nurse/administrator Medical Centre) and Dr Verne Smith.

Photos of the reunion are available now. View them on our Burn Facebook page or send your email address to [burn729am@scorch.co.nz](mailto:burn729am@scorch.co.nz) and these can be sent through to you.



**03 444 9160**

**WOF inspections**

**Total Vehicle Servicing**

**Diagnostic Testing**

**Tyre Fitting & Repairs**

**Motorbike Sales & Repairs**

**Open 7-30 am- 5pm Week Days**

**8-am-12pm Noon Saturday**



## Wilson Contracting

- Baleage
- Hay
- Mowing
- Drilling
- Cultivation



**Phone Brad:** 021 446 939 or **Email:** [wilsoncontractingltd@xtra.co.nz](mailto:wilsoncontractingltd@xtra.co.nz)



## Jump'n'Jack

digger hire

**Dry Hire 1.5 Tonne Digger**

**\$40.00 an hour** (GST minimum 2 hours per day)

*price negotiable for long term hire*

**With Auger**

**\$45.00 an hour** (GST minimum 2 hours per day)

**Courtney 027 367 4954**

## CLACHANBURN COMMENT

This season has been the most unseasonal one most of us can remember, with floods and high rainfalls before Christmas, wind, temperature fluctuations and even the odd light frost in February! I must say the only normal thing about this season is the dry weather we are now experiencing.

So to go the local A & P Show and see the quality and quantity of flowers, vegetables and produce, and enjoy the enthusiasm of the exhibitors is always a pleasure, and something I look forward to each year. In the preserving section the entries were up, the standard of presentation up, and the interesting and adventurous new combinations of flavours was good to see. All of this achieved under a difficult and challenging season.

I have noticed more garden visitors who come to the garden do so to see what grows in the Maniototo, and these people are often those who have moved to our area, and further into Central including Cromwell. Some are new permanent residents and some holiday makers. I do tell them that what grows in an established garden with shelter and water, will not necessarily grow out in the open. So first and foremost is shelter and water. This is a hard thing to accept particularly when we have a short growing season. It reminds me of myself when I first began to garden here, I thought by the time I was forty I would have the garden as it is today – oh no, it has taken much longer!

I have spoken before about selecting trees whether they be evergreen or deciduous, and from experience my advice is purchase good quality stock, plant in good well prepared soil, stake, protect and water regularly for the first several years. Stock from our region has been hardened off to our conditions and preferable to nursery stock from further north. I was saddened to see Mackies garden centre close in Alexandra, but delighted to learn that he is still operating out of his nursery in Letts Gully Rd. A recent visit saw me purchase a few trees and shrubs all grown well and certainly in similar conditions to ours and Barry's knowledge and expertise speaks for itself.

I had a very good phone call from Ben Pratt from Tasman Bay Rose Nursery, to tell me that he has two Lucy roses growing at his front door, and has been so thrilled with its performance, that he is going to include it in his catalogue and it will be kept going into the future. He is happy to donate \$1 per rose to Ranui House in Christchurch. So what the local Lions Club has done to promote this good cause is going to continue, so thanks to them.

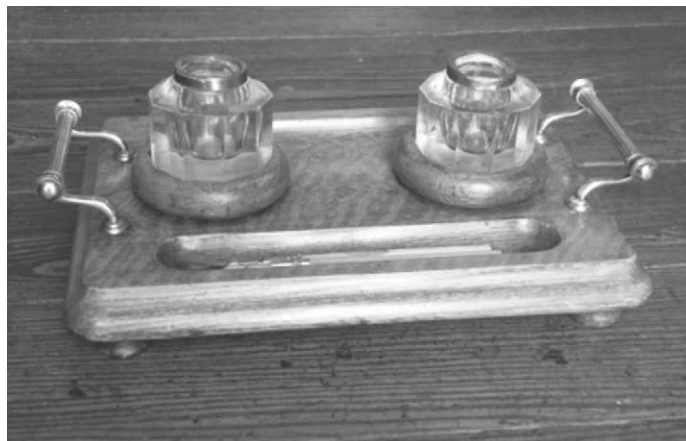
Happy Gardening

Jane

## BEFORE

Maniototo Museums

Before the ballpoint pen was developed and accepted for general use, and after the goose feather quill, all good offices had a pen and ink set. There were generally two ink wells, one for blue-black and other usually for red, and either a ditch for the pens or a rack. The majority of the bases were made from wood but stone or marble could be crafted for the more expensive.



This set, on display in the museum, is from Macraes Hotel.

**McLaren**  
AG & AUTO FARM MACHINERY

**5¢ off**  
per litre

**Get served  
your fuel  
and save 5 cents  
per litre on  
all cash sales!**

**Now available at  
McLaren's**

*To be eligible for the discount the purchase  
of fuel must be made in-store,  
during shop hours*

**RD**  
petroleum

[www.rdp.co.nz](http://www.rdp.co.nz)

## POSITIVELY MANIOTOTO MONTHLY BUSINESS DIRECTORY



### Focus on your future

11 Charlemont Street, Ranfurly, Central Otago  
Tel: (03) 444 9158, enquiries@iclca.co.nz, www.iclca.co.nz



Fertilizer New Zealand is a wholly New Zealand owned independent company specialising in quality, cost effective fertiliser. We offer New Zealand farmers a complete solid and foliar fertiliser programme.



To talk to our fertiliser experts call 0800 337 869  
To find out more visit [www.fertnz.co.nz](http://www.fertnz.co.nz)



### WAIPIATA COUNTRY HOTEL

Owners Mark and Nikki welcome you

**FRIDAY NIGHT  
\$10 SPECIAL**

**Sirloin steak and chips  
Snapper and chips**  
(both served with salad)  
**Gourmet pizzas**

**PH 444 9470**

Plumbing  
Gasfitting  
Drainlaying  
Mechanical Services



**FOLEYS**  
ABOVE & BEYOND  
EVERY TIME

Royce, Ben and Jason are available for all your plumbing, drainage and gasfitting. Ranfurly-based and servicing Lauder, Naseby, Wedderburn, St Bathans, Ida Valley, Kyeburn, Hyde, Gimmerburn, Patearoa and Styx.

Phone us on  
0800 30 35 30 or visit  
[www.foleys.co.nz](http://www.foleys.co.nz)

### HECTON CRUTCHING TRAILER

For all your crutching requirements



**Duncan Elliot**

**027 644 9564**

**(03) 444 9550**

### MANIOTOTO CONTRACTING

(2004) Ltd

**IAN AND JUDY HORE**

**HAY • SILAGE • BALEAGE • MOWING • FEED SALES**

**DRILLING • EARTHMOVING • CULTIVATION**

Yard: 20 Michell St, Ranfurly  
P.O. Box 10, Wedderburn, 9355  
Phone: 027 221 9803  
[ian.maniototo@gmail.com](mailto:ian.maniototo@gmail.com)



### MCER

**Mining &  
Construction  
Equipment  
Repairs Ltd**



Heavy equipment repairs & servicing  
Component overhauls  
Hydraulic Repairs  
Electrical repairs  
Mobile welding

**Phone:** Paul Bain 027 253 1137, 03 489 7317  
or [mcrepairs@xtra.co.nz](mailto:mcrepairs@xtra.co.nz)

**Workshop:** C/o Hyslop Rural, 28 Bell Street, Outram



Your community calendar  
+ a few extras!



10 Pery Street, Ranfurly  
burn729am@scorch.co.nz  
444 9729

## WHAT'S ON BURN AND WHEN - 729am / 87.9fm

<b>OFS Insurance Brokers Ltd Road Reports, Cancellations &amp; Water Notices</b>	<b>Top of the hour 6am - 10am</b>
<b>Waipiata Country Hotel Weather Updates</b>	<b>Top of the hour 6am - 6pm</b>
<b>Tussock Networks Ltd News Updates</b>	<b>Top of the hour 6am - 6pm</b>
<b>Central Otago Sheep Handling Buy, Sell and Swap</b>	<b>9.30am, 11.30am and 3.30pm weekdays</b>
<b>Vet Centre Community Notices</b>	<b>10.30am, 2.30pm and 5.30pm weekdays</b>
<b>The Country with Jamie Mackay</b>	<b>12noon - 1pm weekdays</b>
<b>Monday Night Memories</b>	<b>7pm - 9pm Mondays</b>
<b>Vincent George Travel 70s &amp; 80s Music:</b>	<b>6pm - 8pm Tuesdays</b>
<b>Country Show</b>	<b>6pm - 8pm Wednesdays and 9am - 12 noon Sundays</b>
<b>Rock Show</b>	<b>6pm - 8pm Thursdays</b>
<b>Combined Churches Choices</b>	<b>8am - 9am Sundays</b>
<b>McLarens Sports Round Up</b>	<b>9.30am Sundays</b>

For all notices placed in *Buy, Sell & Swap*, *Live* and *Community Notices* for individuals or groups, a gold coin donation would be very much appreciated (other than community groups who already make an annual donation). Thanks

<b>MONDAYS</b>	
Ranfurly Karate Club:	Maniototo Arts Centre, 6-7.30pm. All new and graded members welcome. 444 9831
Pilates:	6-7pm, MAS Maniototo Learning Centre. 6 - 7pm. Contact 021 165 4872
Ceramics Group:	10.30am at the Reade Street Art Centre. Contact Colleen on 444 9443
Monday Night Memories:	Burn 729am / 87.9fm 7-9pm, 444 9729
<b>TUESDAYS</b>	
Maniototo Golf Club:	Ladies golf, Competition of the Day. Tee off 11am. All welcome
Steady As You Go Classes:	10.30am, Maniototo Stadium Rugby Club Rooms. Call Joan 444 9629, Karen 444 9814 or Maureen 444 9493
70s and 80s Music:	Burn729am / 87.9fm. 6 - 8pm
<b>WEDNESDAYS</b>	
Thai Chi:	Classes 10 - 11am. Maniototo Arts Centre. Inquiries 444 9831
Catholic Women's Fellowship:	Op Shop. Open 10.30am - 4.30pm. Contact Francie on 444 9243
Line Dancing:	Arts Centre @ 3:30pm - 4:30pm. Contact 444 9612
Maniototo Bridge:	7pm Wallace Memorial Rooms. New members welcome. Call Ang on 444 9231
Pilates:	6-7pm, MAS Maniototo Learning Centre. 6 - 7pm. Contact 021 165 4872
Country Show:	Burn729am / 87.9fm. 444 9729 from 6pm
<b>THURSDAYS</b>	
Ballet:	Ph Jemma Robertson 027 314 6595. 3pm - 7.30pm depending on age group.
Rock Show:	Burn 729am. 6pm - 8pm. 444 9729
<b>FRIDAYS</b>	
Art group:	10.30am at the Reade Street Art Centre. Contact Colin on 020 4118 8971
Catholic Women's Fellowship:	Op Shop. Open 10.30am- 4.30pm. All welcome. Contact Francie on 444 9243
Ranfurly Playcentre:	9.30am-12noon. Call Jenny on 021 158 4698
<b>SATURDAYS</b>	
Maniototo Golf:	Tee off 12.45pm. Contact Club Captain - Alan 444 9129
<b>SUNDAYS</b>	
Maniototo Toy Library :	1.30 - 2.30pm - Pipe Band Rooms, Ranfurly. Contact Jamee Howell 027 473 6941
Presbyterian Church:	10am Family Church Service at Ranfurly
Sunday School:	Presbyterian Church. For details - Call Ro on 444 4700
Naseby Golf:	Club Competition. 12.30 Tee off. Contact Carol 444 9949
Catholic Church:	5pm Mass, Sacred Heart Catholic Church, Stuart Road, Ranfurly
Choices:	8am - 9am. Burn729am/87.9fm
Country Show:	9am - 12 Noon. Burn729am/87.9fm

<b>Maniototo Spinners</b>	2nd and 4th Monday	10am - 3pm	Tracey 027 654 1977 or Karen 444 9814
<b>Plunket Playgroup</b>	1st Monday	10am-12noon	Sarah 444 8284
<b>Te Kakano</b>	2nd Wednesday	From 10am	Maniototo Hospital 444 9420
<b>Business Breakfast</b>	3rd Wednesday	8am - 9am	Morgan on 444 9023
<b>Garden Club</b>	1st Thursday	7.30pm	Mary Wright 4449 435
<b>St Hilda's Anglican Church</b>	1st Sunday	10.30am	St Hilda's Church, Ranfurly