



# Positively MANIOTOTO!



Download from [www.maniototo.co.nz/contacts-links](http://www.maniototo.co.nz/contacts-links)

February 2019

## GOING FOR GOLD

January was a celebration of curling at its absolute best. Gold medal history was made and Naseby hosted the largest curling event ever held in New Zealand.



Anton Hood delights in winning gold.

The success was difficult to miss and deservedly so! New Zealand Curling history was made in Lohja, Finland last month when the NZ Men's side won the gold medal at the World Junior B Championships. The predominantly Maniototo team were Peter Becker (coach), Jayden Apuwai-Bishop (Alternate - Dunedin), Hunter Walker (Lead), Ben Smith (3<sup>rd</sup>), Anton Hood (vice-skip, 4<sup>th</sup>) and Matthew Neilson (skip, 2<sup>nd</sup>).

They qualified from their pool with a 5-2 win-loss record. They then defeated Russia 6-4 in their quarter-final, and stole an extra end to pip China 6-5 in the semi to earn their shot at the gold. The team beat Italy 8-4 in the final.



Pictured: L-R Matthew, Anton, Ben, Hunter, Jayden and Pete take a moment outside New Zealand's 'home' of curling proudly wearing their gold medals.

This wonderful achievement secures their participation in the World Junior Championships in Canada next month a first for any Kiwi side. The New Zealand Junior Women's team missed out on qualifying (see page 10)

## OTUREHUA WALKWAY

Waitangi Day put on the perfect afternoon/evening for 34-40 people to walk the proposed Oturehua Walkway. An idea created by local community members would link together "The Golden Progress mine" walkway and historical site, private land and a small section of the Otago Central Rail Trail. This would create a 7km (just over an hour) loop track. Jillian Sullivan, Greg and Tina Becker, Barry Becker, Hilary Calvert and Alistair Broad have all allowed access to the public which is fantastic.



Walkers enjoy the Rough Ridge tour by landowner Greg Becker.

Many others have also contributed hard volunteer hours developing and cleaning the walkway.

For the 'official' opening, walkers were treated to a guided talk of the Progress Mine and poppet head by land owner Barry Becker. Son Greg continued to share historical and geographical context for the climb and meander along Rough Ridge. The walk headed downhill, along the rail trail and took in Hayes Engineering Works before heading back along the Ida Burn to the Oturehua Domain.





Editor Amie and whanau thoroughly enjoyed the walk and can vouch that it will be enjoyed by many and this will asset to Oturehua will surely be enjoyed by many.



Cutting the ribbon are contributing landowners Barry Becker and Jillian Sullivan.




...Continued on page 10

## FORWARD PLANNING - FEBRUARY 2019

SUNDAY	MONDAY	TUESDAY	WEDNESDAY	THURSDAY	FRIDAY	SATURDAY
					1	2
3	4	5	6 WAITANGI DAY	7	8 	9
10	11	12	13	14 	15	16 Naseby Drop-in Session (pg 13)
17	18	19	20 ▶ Travel Talk (pg 14) ▶ Maniototo A&P show day (pg 4)	21 	22	23 ▶ Barbershop Chorus (pg 5) ▶ Hospital Reunion (pg 7)
24	25 Plunket group AGM (pg 8)	26	27 Business breakfast (pg 3)	28 		

### KERBSIDE COLLECTION

Ranfurly, Naseby

-  Blue lid bin (glass only)
-  Red lid bin (household rubbish)
-  Yellow lid bin (plastic and paper)





### Burn729am/87.9fm - Ranfurly

Local news, local weather, text requests  
and evening shows.

Reach local listeners with advertisements (custom recorded in our fully kitted out sound studio).

444 9729, 027 287 6729 email: burn@scorch.co.nz

## MARCH 2019

SUNDAY	MONDAY	TUESDAY	WEDNESDAY	THURSDAY	FRIDAY	SATURDAY
31					1	2 Waipata Bowls (pg3)
3 Hayes Operating Day (pg 12)	4	5	6	7 	8	9
10	11	12	13	14 	15	16
17	18	19	20 ▶ Travel Talk (pg 14) ▶ Business breakfast	21 	22	23 Arts Centre Open day (pg 13)
24	25 OTAGO ANNIVERSARY DAY	26	27	28	29 	30

## POSITIVELY MANIOTOTO Community Notice Board

### NASEBY BOOK SALE THANK YOU

Thank you to everyone who donated books and/or attended the sale at the end of December. A grand total of \$2000 was raised for the Naseby Information and Craft Centre. Well done all.

### LATE NIGHT SHOPPING SUCCESS

Thank you to everyone who came out and supported the Ranfurly Late Night Shopping evening, it was fantastic to see so many people doing their Christmas shopping locally. There were a total of 447 entries (up from 378 the previous year) into the draw. Mayor Tim Cadogan kindly drew the winners for us during our December business breakfast. Congratulations to Amanda Cheesmur (shopping at The Hair Studio) and Amie Pont (shopping at Maniototo Four Square) for winning the two hampers.

*ED: Amanda and Amie would like to thank the Maniototo Business Group and the wonderful local businesses for the gorgeous hampers. Amanda says she's definitely pleased she went to the Hair Studio to buy herself a Christmas present!*

### THANK YOU SHOPPERS

Maniototo Four Square would like to thank everyone for your support over this very busy summer (including the very successful Late Night Shopping evening). Congratulations to everyone that has won a prize in one of the competitions we've been running over the last couple of months. These included: Jo Weir (Coca Cola Bluetooth Chilly Bin), Tash Woodsford (V UE Boom), Kaleb Eder (Coca Cola Bar Fridge), Jo Ryan (Christmas Pre-order Form \$50 Voucher), Shelly Munro (Pizza Board), Hedley and Isobel (Pizza Board), Margot Hall (Pizza Oven) and Desna Hawea (Pams Avocado \$50 Four Square Voucher).

### A BIT OF BOWLS

The Waipiata Bowling Club Husband and Wife and Optional Pairs Tournament will be held on Saturday March the 2<sup>nd</sup> starting at 9.00 am. Entries to Kris Carey 444 9107 or Andy MacDonald 444 9017 by Monday February the 25<sup>th</sup> please.

### BUSINESS BREAKFAST

The February Maniototo Business Breakfast will be held on Wednesday the 27<sup>th</sup> of February due to the A&P show being on the 20<sup>th</sup>. It will be at Ranfurly Hotel, 8am. All very welcome.

### MANIOTOTO PLUNKET GROUP AGM

Maniototo Plunket Group AGM for 2018. Monday 25<sup>th</sup> February 2019, 8pm. Hawkdun Lodge conference room. See page 8 For more details.

### OP SHOP HOURS

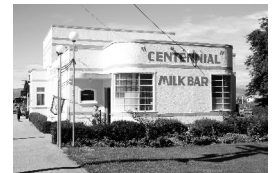
Wednesday and Friday's. 10.30 till 4.30. We thank every one for your donations to the Op shop and would appreciate good clean clothing and we do not take items of furniture.

### MANURE NEEDED

The Maniototo Pakeke Lions are running low on manure so if anyone has some they can use in their fundraising efforts please contact Denis Murcott, Pakeke President on 444 9594.

### THE CENTENNIAL GALLERY

The Centennial Gallery is now open from 11.00am to 3.00pm, seven days a week (volunteer availability permitting). Experience a slice of life in the Maniototo. All very welcome. Entry is only a gold coin donation.



The next edition of **Positively Maniototo** will be  
March 2019 edition.

(Content cut off 20<sup>th</sup> February 2019)

Phone Amie on 027 264 3766

or email: [amiepont@gmail.com](mailto:amiepont@gmail.com)



OFS Insurance Brokers

Locally owned



**Hunter Stevenson**  
Insurance Broker

**Need Personal Non-biased Insurance Advice for ...**

Your farm or business?  
Your home and contents?  
Your life and health? Your income protection?

OFS Insurance Brokers are locally owned and managed insurance specialists offering personal advice and a no-obligation chat about your insurance needs.

**Call Hunter today**

p: 034716800

f: 034717466

m: 027 438 1288

e: [hstevenson@ofs.net.nz](mailto:hstevenson@ofs.net.nz)



## TIME TO SHOW OFF

Janine Smith (Secretary)

This month will be the Maniototo's 120<sup>th</sup> Annual A&P Show. Make sure to put aside Wednesday the 20<sup>th</sup> of February for a good old fashioned community day out.

If this show is your first in the Maniototo then you're in for a real treat. Outside, the equestrian events start early in the morning and the markets and trade



displays open around 10am. All sorts of judging will have started the day/night before and continues throughout the day. There's top quality wool and sheep sections, showing off the high calibre of stock produced in our area.

There are a couple of new faces this year with Janine Smith taking over from Neville Wahrlich as secretary and Jane Girvan taking over from Tracy Crossan as horse convenor. A lot of time has gone in to further developing our showdayonline link as we move towards a paper and post-free future.

The trade stalls on display promise to have something for everyone. From an abundance of machinery and rural business operators to browse over and catch up with, to food and entertainment for the kids. The Horticultural exhibits on display in the stadium show off the hard work of gardeners, food lovers, and craft enthusiasts alike with some interesting new classes. There is always a well-supported children's section thanks to our local schools and families.

Show officials would like to thank the committee, volunteers and sponsors for their continued support in making the show a success every year. Thank you also to the competitors for their time and effort put into their entries from animals to food to crafts. It's great to see a massive amount of skill and talent in the Maniototo.

## SHOW TIMES


<b>8am</b>	Equestrian events begin
<b>10am</b>	Markets/Trade Stalls open, morning tea available in stadium
<b>11am</b>	Horticultural and Industrial Division opens inside stadium
<b>12 Noon</b>	Fancy Dress (in Pony Club Arena), lunch available in stadium
<b>12.30pm</b>	Show Jumping begins
<b>1pm</b>	Round the Ring Jumping begins
<b>2pm</b>	Grand Parade and official opening of the show
<b>3pm</b>	Pet parade (ringside) and afternoon tea in stadium
<b>4pm</b>	Prize giving in stadium

## INSIDE THE STADIUM ON SHOW DAY



The Horticultural and Industrial committee are gearing up for another great show. The talent in our community never ceases to amaze us and we look forward to receiving your entries. Remember to download a schedule from our facebook page or pickup a copy from More that Books. Entry forms may be emailed or mailed to the secretary or dropped into a box in the Maniototo Area School office.

*(Continued next page)*



**Maniototo Four Square**  
Open 7 Days  
03 444 9021

**Maniototo Four Square Supermarket**

**Maniototo Café**  
EST. 2015  
Wholesale Food & Refreshments

**Café - Coffee - Food**  
03 444 9023  
1 Pery St, Ranfurly



**STEELE FENCING LTD**

**LUKE STEELE**  
0274859823  
RANFURLY

FOR ALL YOUR FENCING NEEDS  
THROUGHOUT CENTRAL OTAGO

steelfencing@hotmail.com



Our theme this year 'Birds Bees and Butterflies' is going to make for some great themed entries. Keep an eye out on show day for a bee display!

The school children in our community will be busy completing art on their return to school and many will be preparing sand-saucers, pinecones and emojis among other things for show day.



Painting by Briar Duncan

The feature section this year is the construction of a bird house, We can't wait to see what you clever people create! Some new additions to the schedule include kombucha and ginger ale for the brewers among us and honey snaps and bliss balls in the baking section. Apples, stone fruit and berry classes bring a fruity element to the vegetable section and after a record amount of entries in the industrial section last year we have something a bit different happening with a new class for a woolen knitted baby vest following the pattern provided in the schedule. These vests will be donated to Queen Mary Maternity following show day.

We look forward to seeing you in the hall on show day and thank you for all your support!

Elizabeth O'Neill (President) and Sarah Paterson (Secretary)

## NASEBY FAMILY FUN

On New Year's Day the Naseby community again hosted a family fun day on the domain.



Organiser Paul Sullivan would like to thank the following:

Thank you to fellow organizer, Donna Martin, announcer Grant McClean and Julie Ashton for taking fabulous photos on the day. Marie Small and Lulu McClean transformed many a smiling face throughout the day as our face painters and Grayson Small and Thomas McClean topped off the look serving candyfloss.

A day of entertainment is nothing without the Maniototo Community Sound System put together so professionally by Ewan Mason and Zane Hemmingway on music.

The day is known for the fun participation and thanks to Meg and Dana Ballantyne, Jessica, Aleece and Laura Mulholland for co-ordination of the races. Thank you to Paul Mullholland, Gayle and Dennis Sherson, Craig Ballantyne who were all on games. Naseby Fire Brigade were there with bells on.

Neil Rout and Jill Wolff (from the totem house) did an epic job at the sausage sizzle and Dave Crutchley kindly donated the candy-floss machine and materials. We were delighted to have Mr Whippy and Espresso2Go in attendance and hope to have more food vendors next year.

Special thanks to the Ancient Briton and Big Sky Adventures for their generous prize donations. Also to the Black Forest cafe and Naseby store for vouchers.

Many others gave their time on the day so thank you very much.

## BARBER SHOP CHORUS

HIGHLAND HARMONY and FRIENDS

Featuring Phil Caulfield with His Own Composition " NASEBY "

Naseby Town Hall

Saturday 23<sup>rd</sup> February 2019.

7.30 pm.

Tickets at : Naseby Store , Ancient Briton Hotel , and Books and More.

\$10 per head .

All proceeds to Naseby Volunteer Fire Brigade.



Did you know the correct speed when driving past a stationary school bus is

20 kph

This applies to vehicles passing in both directions.

## WALLABY NUMBERS CONTINUE TO RISE

Wallaby numbers are still increasing in the Maniototo so Positively Maniototo thought this was an opportune time to remind readers of the contact details if you see one.

Maniototo Pest Management manager Ossie Brown maintains that resources and funding in an attempt to deal with the increased sightings are too limited so your help is needed. Brown said wallaby numbers were getting out of hand with the number of sightings increasing.

Any sightings can be rung in to Adam 022 126 4407 or Ossie on 027 225 4511 or 0800 474 082. It is strongly recommended everyone reading this article input these numbers into your mobiles phones right now. You never know when you may need them.



## GENEROUS DONATION

Last month W.S Hickey and Son Ltd of Omakau donated a few thousand sacks to the Maniototo Pakeke Lions Club to use for bagging sheep manure. In addition to this magnificent gesture, they also loaned their tandem trailer to transport them from Omakau to Ranfurly.

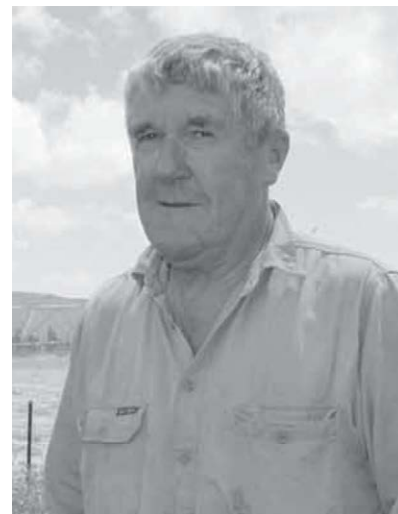


Brent Hickey, Hayden Hickey – of W.S Hickey and Son, and Denis Murcott, President of the Pakeke Lions.

## QUEEN'S SERVICE MEDAL AWARDED

Geoff Crutchley from Puketoi has been awarded a Queen's Service Medal for services to water management.

Geoff is a sheep and beef farmer from the Maniototo with a particular interest in irrigation and water use issues. His involvement with irrigation began in the early eighties and he has been the chairman of the various controlling bodies since that time. In 1997 he instigated the formation of the Maniototo Pest Management Company, and served as a director on the company for 11 years.



Geoff was involved in the establishment of the Taieri Trust (New Zealand's first large-scale integrated catchment management project) and was the initial chairperson for three years from 2001.

Since 2008 he has chaired the Upper Taieri Water Resource Management Group, which has the primary objective of establishing a whole of catchment, community-based model for water allocation and use.

The very important and often public focus of the group has been to address the issue of historic permits for water use, which are due to be phased out by 2021.

Mr Crutchley was also a past member and chairman of the Patearoa School Board of Trustees.

Congratulations Geoff!

## JACQUI DEAN MP FOR WAITAKI



*Jacqui is in Ranfurly each month.*

Please contact her office if you would like to make an appointment. Jacqui has a member of her team available each week on Monday's 10am - 12pm at Alexandra Resource Centre.

### OAMARU OFFICE:

127 Thames St, Oamaru | Ph: 03 434 7325 | 0800 MP WAITAKI  
waitaki.mp@parliament.govt.nz | www.jacquidean.co.nz

Funded by the Parliamentary Service and authorised  
by Jacqui Dean MP, 127 Thames, Oamaru

**National**  
www.national.org.nz



**ICL**  
CHARTERED ACCOUNTANTS

**Focus on your future**

11 Charlemont Street, Ranfurly, Central Otago  
Tel: (03) 444 9158, enquiries@iclca.co.nz, [www.iclca.co.nz](http://www.iclca.co.nz)



# HOSPITAL AND CHALET REUNION



## Maniototo Hospital, Medical Centre and Chalet Rest Home Reunion Saturday 23<sup>rd</sup> February 2019

Join us for a great get together from 11am for socialising, new and old hospital tours, lunch and drinks, cake cutting, speeches, photos and more catching up!

We are calling for registrations of interest from ALL past and present employees, Board Of Trustees and volunteers of the Maniototo Hospital, Ranfurly Medical Centre and Chalet Rest Home.

Registrations close on Friday 8<sup>th</sup> February, email [burn729am@scorch.co.nz](mailto:burn729am@scorch.co.nz) or contact Denise 444 9729 or Val 444 9740. to register your name and contact details,

Check out the latest images of the new Maniototo Health Services complex (combined hospital, rest home and medical centre). It is nearing it's completion! Take some time to admire it next time you are passing.



View from the south west angle showing main entrance to the new hospital wing.



View from north west includes the new Chalet wing on the right.

## Enjoy your lifestyle, knowing your future is secure.

- Clear financial guidance
- Affordable wealth management
- Relationship-based investment advice
- Second opinion review of existing investments
- Savings and Kiwisaver

03 477 9923  
[phwealth@ph.co.nz](mailto:phwealth@ph.co.nz)  
[phwealth.co.nz](http://phwealth.co.nz)

**PolsonHiggs**  
Wealth Management

## THE MANIOTOTO PLUNKET GROUP

The Maniototo Plunket Group is a volunteer group committed to improving the lives of children under five and their families in the Maniototo community. Here are a few things we do:

- Meals for new mums
- Collation of New Mum Packs
- Support for families with under-5s who are in need of assistance.
- Coordination of Music and Movement group, Kapa-Haka, Sewing lessons and Cooking lessons with Mary Heaney from COREAP.



- Fundraisers focussed on sustainable living eg. Wet bags and Kai Carrier reusable food pouches.
- Adult Education events focussed on improving the lives of under 5's and their families eg. Brainwave Trust's early brain development seminar, Kate Meads' Waste Free Living seminar.
- Annual Christmas party with a visit from Santa and the noddy train.
- Site at the Maniototo A&P show to support families of young children attending the show. Facilities at this tent include: comfortable breast-feeding chairs, change table, high chair, free water and free sunscreen.

We are always looking for your advice and assistance with improving the service we provide to this community. You do not need to be a young mum to be involved! In fact we would love some help from the generation above us, those who have been mums of young families in a rural community and can empathise, or from those involved in early childhood centres or childcare – your input would be much appreciated. Ultimately we would love anybody to come along to any of our events who has a passion, like us, for improving the lives of our community's under-5s!

We are holding our **2018 AGM on Monday 25<sup>th</sup> February at 8pm** at the Hawkdun Conference Room, it will be short and sweet, but there is a minimum number of people required to be present to hold an AGM so the more the merrier.

## CENTRAL CARS RANFURLY



**\$6,995**


### Holden Rodeo Dog Transporter 2000

Holden Rodeo extra cab ute, set up as a dog transporter in very tidy condition. It has been a Police four Dog transporter but could be used for anything. Fast and powerful with Isuzu's bullet proof V6 engine and gear box. With blue tooth hands free, reversing camera, tow bar and roof vent. **Trademe Listing #: 1935581305**

### Maniototo's only licensed used car dealership

With 40 years in the car business, both as a mechanic, selling and importing vehicles. I know what I am doing and stand by my cars 100%. If you want I can import or source any vehicle. Phone me if you have any questions.

**Call Terry on 021 0222 3314**



*Handyman / Carpenter*

26 Thomas Street Ranfurly Central Otago

**Adrian Clouston**  
Handyman-carpentry / painting/ plastering /  
tiling/ concrete / carports/ pergolas/ decks

**Residential & Commercial -  
Servicing Maniototo**  
Phone- 02108158112  
Email- aj\_clouston@hotmail.com

## MCER

### Mining & Construction Equipment Repairs Ltd



Heavy equipment repairs & servicing  
Component overhauls  
Hydraulic Repairs  
Electrical repairs  
Mobile welding

**Phone:** Paul Bain 027 253 1137, 03 489 7317  
or [mcrepairs@xtra.co.nz](mailto:mcrepairs@xtra.co.nz)

**Workshop:** C/o Hyslop Rural, 28 Bell Street,  
Outram



## MANIOTOTO BIG BASH



The Gimmerburn Force vs Kaitangata at the Cauldron (Gimmerburn).

A great weekend of community cricket was organised by the Maniototo Junior Cricket Club was a fundraiser not only for the club but also for another very good cause. You may have already heard of wee Harry Finch. Harry is one of twin sons of Hayden and Bex Finch from Dunedin and was diagnosed with Cerebral Palsy at the age of six weeks old. Walking and other things are difficult and sometimes painful for Harry (now three), who is not yet able to stand or walk independently. Hayden and Bex have recently learned that he has been accepted for \$150,000 surgery in the USA which will allow him the best chance to to walk, play and do all the things that his twin brother Ollie and his friends can do.

So a weekend of cricket was created! Many commented on how great it was to see fathers and sons to get out on the pitch together. Two father/son combos playing for Naseby included Marc, Steve and Blake Cormack and Tim (left), John and Hamish McMillan (right). Even One News was in on it. Up to film the curling, TVNZ managed to include some Big Bash cricket footage, highlighting the temperature contrast between the two codes!



Sponsor, Richard Smith says of the weekend, "It was a pleasure to sponsor the Auto Super Shoppe's Big Bash. I don't think I've seen so many men have so much fun. It was basically a Maniototo cricket reunion. I'm sure physios all over Otago were very busy following the weekend. Thanks to the organisers and we look forward to another success like this in the future."

The idea of the Maniototo Big Bash was Ryan Dowling's and was brought to reality by a great support crew.

## Veterinary Centre Position

The Veterinary Centre is a leading progressive Veterinary Practice which operates from seven clinics. We have a reputation for providing quality service while employees enjoy a friendly and satisfying work environment.

### Part-time Position – Ranfurly Branch

Customer service, clinic retail sales, organising veterinary consults, and assisting with the day to day running of a rural veterinary clinic will be involved. Plus potential rural vet-tech work could extend this role.

The successful candidate will be trained in all aspects but a farming background would be an advantage.

The hours would start at approx. 15 hours per week – 3 days a week, with the possibility to extend. The ability to cover holidays/sick days would be advantageous.

The HR Manager  
Veterinary Centre Limited  
311 Thames Street  
Oamaru 9400  
Email: oamaru@vet111.co.nz

www.vet111.co.nz  
Phone: (03) 434 5666

Please send your CV and a  
covering letter by  
Wednesday 13<sup>th</sup> February 2019



**by the Big Blue Cross**

## Ranfurly

**FREE Esky 20 litre Cooler  
with every 20 litre Matrix**



Free drench check with  
every 20 litre oral sheep  
drench purchased

**By the Big  
Blue Cross**



**Veterinary Centre  
Phone 03 444 1020**

Positively Maniototo had the pleasure of attending the community welcome home for the teams at in the Maniototo Curling International lounge bar. Hours after arriving home the curlers quickly freshened up, donned their gold medals and joined a good turnout of supporters for team introductions and speeches.



**Anton Hood, Warren Dobson and Sean Becker competing in the World Curling Qualifying Event held last month in Ranfurly.**

There was no rest for Anton Hood and Jessica Smith. It was straight into the World Curling Championships. Anton was joined by Scott Becker (Skip), Sean Becker (Vice-skip), Warren Dobson, Simon Neilson (Alternate) and coach Peter Becker. Jessica joined Bridget Becker (Skip), Natalie Thurlow (Vice), Abby Peddie (Mcraes), Eloise Pointon and Coach Peter De Boer.



**Warren Dobson concentrates on throwing his stone.**

While Maniototo basked in summer temperatures (the 'heatwave' hadn't quite arrived yet), curlers were kept cool at the Maniototo Curling International indoor facility (the largest in Australasia) as Naseby hosted the World Curling Qualifier Event. This was the biggest curling event ever hosted in New Zealand.

Eight teams from each gender competed for their spot. An interesting team entry was Brazil looking to qualify for their first ever world champs.

The New Zealand men finished fourth in the round robin at this event, so just missed the playoffs. The Kiwi women finished eighth.

## CONGRATULATIONS AND THANK YOU

**Junior Women's Coach Nelson Ede**

Congratulations to the NZ Junior Men who claimed gold at the World Junior B Curling Competition in Finland. With an outstanding performance throughout the latter part of the competition, they have qualified NZ for the World Juniors to be held in Canada in February. Unfortunately the women could not match their achievement of last year when they finished 4<sup>th</sup> and narrowly missed qualifying that year.



**Junior Women's Coach Nelson Ede, Lucy Neilson, Jayden Apuwai-Bishop, Courtney Smith, Hunter Walker, Mhairi-Bronte Duncan, Ben Smith, Holly Thompson, Anton Hood, Jessica Smith, Matthew Neilson and Junior Men's Coach Peter Becker.**

The Junior Men's team still has a couple more years together in the Junior ranks. Three of the women's team age out this year so a new team will emerge for next year.

The NZ Junior Men, Women and coaches would like to express their thanks and gratitude to all those who have supported them over the past few years.

Thanks to family and friends who have always supported and encouraged us and to the local community who have supported our fundraising efforts and always provided moral support and encouragement. Gratitude and thanks to those employers listed below who have allowed us the time off to pursue our passion and local businesses who have provided or helped with fundraising opportunities.

Thanks also to those Juniors who have gone before us and helped forge a strong and dedicated group of athletes who have trained hard together and supported one another along the way.

The teams would like to thank and acknowledge The Skeggs Foundation and Otago Community Trust, High Performance Sport Otago, Balance Plus Curling Equipment, Ernslaw One Ltd, Wood Energy NZ, GWD Toyota, Breen Construction, Foleys Plumbing, Dairy Farm Partnership, Ancient Briton Hotel, Black Forrest Cafe, Ranfurly Hotel, Jan and Grant Bean, Maniototo Curling International, Dunedin Ice Stadium, New Zealand Curling Association.





DRILLING ■ DISTRIBUTION

SINCE 1918

## QUALITY WOOD CHIP DELIVERED TO YOU



■ Wintering sheds ■ Wintering pads ■ Calf sheds ■ Lanes



**Ultimately cows need a clean, dry and comfortable surface to rest on.**

McNeill wood chip is sourced from Niagara Sawmill where they produce clean, quick drying radiata pine chip that is ideal for use in the rural sector.

Not only does radiata pine smell fresh it is naturally hygienic... as like wooden chopping boards have a natural tannin in them that acts as an anti-bacterial agent. Wood chip creates cleaner cows prior to milking and are less susceptible to mastitis.



Wood chip can be washed and dries quickly as air circulates around the chips. This continuous air flow is beneficial in keeping moisture at a minimum.



Moisture is one of several essential factors necessary for bacterial growth in bedding materials. Therefore, it is important to keep bedding as dry as possible to minimise exposure to environmental mastitis pathogens.

Contact Tony Thompson  
03 230 3019 • 027 222 2097  
or Andy Boniface  
03 230 3018 • 027 204 3694

[woodchip@mcneillnz.com](mailto:woodchip@mcneillnz.com)  
[www.mcneillnz.com](http://www.mcneillnz.com)



## THE GIFT OF EDUCATION

Two years ago Jayne Hazlett, her Mum Jill Smith (below) and daughter Aimee Rose went on a 'G Adventures trip around Cambodia. Here, they saw much poverty and lack of educational support. After meeting a friend who helped small schools and children into getting an education, they planned another trip (just Jayne and Jill this time) and took extra suitcases full of stationery, books, laptops and i-pads. Some of it was donated from locals and friends and the rest was bought from book steptoes and Warehouse Stationery. Their friend and [www.rootscambodia.org](http://www.rootscambodia.org) organised to take the suitcases to the school and give them to the children.

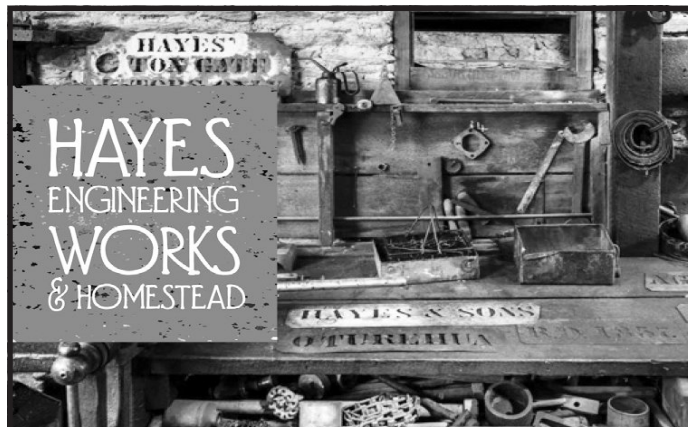


*"We used our previous GAdventures CEO, Van Ratha and he picked us up from Bangkok and took three heavy suitcases on the bus to Siem Reap in Cambodia. As well as the technology, my family collected more books, stationery and toys to fill cases. House of Travel Alexandra paid for an extra bag for us. There was lots of team work to get the bags there and Mum and I travelled very lightly – just knickers and toothbrush," says Jayne.*

Van Ratha posted on Facebook. *"I'm excited to bring eight laptops, five tablets and other school supplies such as color, pens, pencil included toys to a school in Bakong district in Siem Reap. I also have a big hope that all of these things will make these kids education getting better. Big thank to Jayne Hazlett and her family and friends from New Zealand."*



Grateful recipients - the donated technology, stationery and toys are taken to Siem Reap in Cambodia.



JOIN US ON A 'LIVE'  
OPERATING DAY IN 2019

**3 March | 7 April**

Marvel at a fully operational turn of the 20th century engineering workshop and 1920s villa... and discover how genuine kiwi ingenuity and resourcefulness led to a remarkable home-grown industrial design that is still in use today!

*Rewire on a Hayes Roast Coffee, enjoy our café delights and gift shop.*



HERITAGE NEW ZEALAND  
POUHERE TAONGA

03 444 580139 Hayes Rd, Oturehua, Ida Valley  
[www.hayesengineering.co.nz](http://www.hayesengineering.co.nz)

2120023



RANFURLY BALEAGE AG LTD

☎ DEAN 0278059812

☎ ISAAC 0222867285

✉ [isaacharwood23@gmail.com](mailto:isaacharwood23@gmail.com)

**BALEAGE + ALL GROUND WORK**



CHECKETTS MCKAY LAW  
CENTRAL OTAGO

**Checketts McKay Law operating from  
their Pery Street office**

Please call the office on **444 9060** with your enquiries

**Monday – Wednesday 10am – 4pm | Thursday – Friday 9am – 5pm**



**Gillian Clarke**  
(Tuesday)



**Alan Coull**  
(Thursday and Friday)



## ARTS CENTRE OPEN DAY

A day of celebrating creativity in our community will feature demonstrations, displays, stalls and performances. There will also be food and music. More details of specific artists etc will be in the March edition of Positively Maniototo.



Russell Perry conducts a Watercolour workshop at En Hakkore held by Maniototo Community Arts Council

The Maniototo Community Arts Council has been busy fundraising and holding working bees to improve the centre physically and digitally. The day is to 'reveal' the first stage of improvements.

**Arts Centre Open Day -**

**Saturday 23<sup>rd</sup> of March from 10am.**

So, mark it in your diaries and, if you have a creative talent you would like to share, please get in touch with Amie Pont on 027 264 3766.



Luke Anthony bird carver in his studio in Ranfurly. Luke will be at the Open Day in March working on his native New Zealand birds carved from salvage, native timbers. Check out his work on [www.lukeanthony.kiwi](http://www.lukeanthony.kiwi).

## NASEBY VISION DROP-IN

Late last year a group of University students, working under the Ignite Consultancy, spent time understanding Naseby and what the future may bring. They presented a report looking at Naseby's potential growth with tourism and how we embrace and manage this as a town, whilst at the same time retaining the unique characteristics that make Naseby what it is.

Naseby Vision is now in the process of putting some of this into action, with a January meeting identifying some projects to be started. The next stage of this is to provide information and also to get input from the community.

There will be a drop-in centre open on Saturday Feb 16<sup>th</sup> from 2pm to 6pm in the shop beside the Black Forest Cafe to come and have a chat about the projects. We're very fortunate that Tim Cadogan (CODC Mayor) is also able to spend an hour at the drop-in centre from around 2pm.

Mark it on your calendar and come along for a chat.

More information will be available on the Naseby Vision website ([www.nasebyvision.org.nz](http://www.nasebyvision.org.nz)), and/or if you would like to receive the Naseby updates, please email [nasebyvision@gmail.com](mailto:nasebyvision@gmail.com) to have your email added.

Plumbing

Gasfitting

Drainlaying

Mechanical Services

**FOLEYS**  
ABOVE & BEYOND  
EVERY TIME

Royce, Ben and Jason are available for all your plumbing, drainage and gasfitting. Ranfurly-based and servicing Lauder, Naseby, Wedderburn, St Bathans, Ida Valley, Kyeburn, Hyde, Gimmerburn, Patearoa and Styx.

Phone us on 0800 30 35 30 or visit [www.foleys.co.nz](http://www.foleys.co.nz)

## GRAHAM ELECTRICAL LTD

**Contracting, appliance sales and service since 1954**

**Shop** 444 9314 **Doug** 027 438 8380 **Rob** 027 447 8627 **Nic** 027 330 4605

[grahamelectrical@xtra.co.nz](mailto:grahamelectrical@xtra.co.nz)

**Fisher & Paykel  
Appliances,  
Panasonic TVs**

**FUJITSU Haier**  
Fujitsu and Haier air conditioning

## BURN 729AM/87.9FM

Denise Baddock

December and January! The weather, the thunderstorms, the rain, the sunshine, the phenomenal growth, the festive season, the Christmas lights, Santa,

the fun events and the visitors! Yes the visitors by the droves staying in the Maniototo, arriving by bike, car, caravan and motorhome - coming from near and far ... and still they come ...

We must not forget the 'GOLD' yes the Gold medals won by the young curlers recently back from Finland from the World Junior B Curling Championships. So proud of them all, and that includes the young women's team who gave their all out on the rink. True ambassadors for the Maniototo, New Zealand and the sport of curling (see more front page and continued on page 10).



To all the families who came to visit Santa, and the children who joined us for the Burn 'Pool Party', thank you for the wonderful support. I must mention and thank Santa for visiting, our wonderful photographer Dianna Whyte, the Maniototo St John Ambulance for the use of their rooms for our Grotto, the Central Otago District Council for the use of the pool facilities, the pool crew in attendance on the day, our sound technician Ewan Mason and the Burn team and committee members who helped out.

We welcome on board here at Burn, young Maia MacDonald from Patearoa, Maia has joined us on air with her weekly 'Kids Hour' on Thursday afternoons between 4 - 5pm. Tune in for a fun filled hour of music, book and film reviews, interviews with some key local guests, interesting facts, a quiz question, recipe and loads more. Maia's show preparation via a 'power point presentation' was very impressive with her first show proved very popular. Her first interview was with local beekeeper Anna, who amazed us all how the humble honey bees work their magic. We look forward to her weekly slot.



Burn729am/87.9fm and 'Positively Maniototo' are the best word of mouth in the Maniototo so for all your communication and advertising requirements

**Burn729am/87.9fm** burn@scorch.co.nz  
444 9729 / 027 287 6729

**Positively Maniototo** amiepont@gmail.com  
027 264 3766

## Keeping it live & local here on the Maniototo' on Burn729am/87.9fm

### COMMUNITY FRUIT & VEGIE STAND

Do you have spare vegies, fruit, eggs, pickles, jams, bottled beetroot etc or plants from your garden or pantry?

Why not donate some to the stand for someone else to enjoy?



The Maniototo Community Fruit & Vegie Stand is situated on the deck at Burn Radio in Pery Street, Ranfurly. A shade cloth cover is now in place so your goods will stay fresher longer. People do stop and check it out daily, and your kind donations are gratefully appreciated.

#### 'Sharing is Caring'

*(Please remember this is not a stand for other used goods ie crockery, toiletries etc or out dated food items)*

## Kay and Stephen Dunn Travel Brokers



**VINCENTGEORGETRAVEL**

*'For personal and professional travel advice where and when you need it.'*

Maniototo

Join Stephen and Kay for their monthly travel talk on BURN 729AM/87.9FM

**Wednesday 20 February - 10:15am**

**For all your travel requirements**

**Ph: 444 9132 or 027 522 2389 or 021 100 6718**



kayd@travelmanagers.co.nz or  
stephend@travelmanagers.co.nz



Approved Travel Broker of Travel Managers Group Ltd  
Registered Office: Level 7, 2 Emily Place, Auckland, NZ



## BACK IN THE DAY

Gaynor Gilchrist

This is the Burn 729am Sunday morning Choices team around 2001 or 2002 back in the days of Classic Gold Radio.



Rear: Rev. Alan Judge, Claire McCormick and Ailsa Gilchrist  
Front: Gaynor Gilchrist (nee Muir) and Irene Bleach.

Choices started in August 1999 by Bill Keelty with the cost to run the show shared by the three main local churches.

The program has been broadcast every Sunday ever since and for many of those years Tonto Love had 'manned' the desk for the Choices announcers. In latter years, some have learnt to run the desk themselves. Every Sunday, three or four presenters alternate delivering their 'Choices'. Current presenters at Burn are Claire Mulholland, Lynley Smith and Stewart Hawkins. Over the years almost 1000 individual shows have been prepared for Choices listeners. In August this year, Choices (8am each Sunday) will have been presented for 20 years!



Gallaway Cook Allan is a premier Otago-based full service law firm.

Contact Devon Miller for all your Private Client needs:

- » Wills and Enduring Powers of Attorney;
- » Estate Administration;
- » Relationship Property; and
- » Trusts and Asset Protection.

03 474 9790

devon.miller@gallawaycookallan.co.nz

[www.gallawaycookallan.co.nz](http://www.gallawaycookallan.co.nz)



GALLAWAY  
COOK  
ALLAN  
LAWYERS

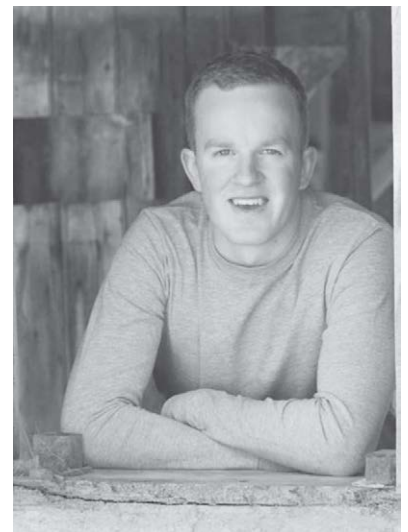
## NASEBY 'TRIBRARY'

The recently established 'Tribrary' at the Naseby Atheneum Reading Room is proving popular. Lochie Grant came up with the idea of adding three more things to the library and collected equipment to start things off.

Visitors can borrow sports gear, games and puzzles, and DVDs on an honesty basis. It's been popular over the peak holiday period with the most commonly borrowed items being the cricket gear, some tennis racquets and children's DVDs.

## CHARITY RIDE

Twenty members from South Canterbury's Emergency Services are banding together to take on a 310km mountain-bike ride from the Alps to the Ocean (Mt Cook to Oamaru via Lake Ohau and Otematata) this month. This ride would normally take five to six days, but they are all doing it in three days instead!



Local lad Josh Whyte (above) from Kyeburn (a previous MAS student, NZ Junior curler and Ranfurly St John Youth Leader) joined the Timaru (South Canterbury) Emergency Services St John Ambulance team in 2017 and has decided to be part of this event fundraising for three fantastic causes.

The ride is a combination of off-road and sealed road sections, some with a higher degree of difficulty than others. All twenty are completing the 310km individually, which will mean 6-8 hours on the bike each day depending on the conditions.

They are raising funds for:

- Westpac Rescue Helicopter Trust (Canterbury/West Coast)
- New Zealand Flying Doctor Service
- NZ Mental Health Foundation (Mental Health Awareness)

You can donate by visiting their Give-A-Little page SOUTH CANTEBURY EMERGENCY SERVICES CHARITY RIDE - ALPS TO OCEAN.

Good luck Josh from all of us back home!

## Don't forget about the Rams!

Rams are often the 'forgotten ones' at this busy time of year despite being highly valuable individuals that have an important date coming up with the ewe flock in a couple of months. The rams need to be in tip top order to get the job done – having a good ewe flock is only half the equation.

The vital maintenance check they need, given their sole function in life, is a systematic palpation of all the scrotal contents – and the 'quick squeeze' you see us do gives a surprising amount of information about that ram's breeding soundness. Most importantly we are feeling for lumps or swellings in the testes and associated tubes, which usually indicate bacterial infection. If lumps are found blood is taken from that ram to see whether the infection is *Brucella ovis*, a sexually transmitted infection with major implications for flock reproductive health. It can cause loss of early pregnancies as well as serious loss of ram performance, so scanning percentages will take a hit if it is present.

While the Maniototo has the disease largely under control (due to farmer awareness, and regular testing by vets), there are still outbreaks, so *Brucella* is lurking out there. In 2017 we dealt with three cases in the area. Fortunately we had no cases in 2018 and are yet to see any this year.

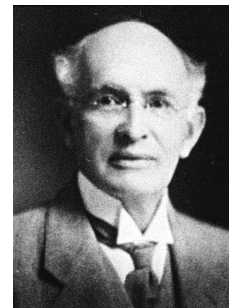
Other issues picked up by palpation are scrotal mange and cryptorchid rams. And while the rams are in mind, consider other maintenance jobs like vaccination and foot checks, and feel free to talk to us about issues such as parasitism.

Ram runs are well underway for the season, so if your rams haven't had their annual warrant of fitness make sure you give us a call to get them booked in.

## "A ROSE BY ANY OTHER NAME..."

The meaning behind the name "Oturehua". Re-printed with permission from the Oturehua Community Newsletter.

Rough Ridge was renamed Oturehua in 1908, research into "*Papers Past*" reveal a little of the events of the time, the first mention was in the Otago Witness on 22<sup>nd</sup> July 1908 where it was reported that "*Sir Joseph Ward, Premier, on his tour through Central Otago visited the area and promised to endeavour to have the name of the place changed at an early date, remarking that the name in itself (Rough Ridge) would discount the value of a man's property by 50 percent.*"



Sir Joseph Ward

He must have moved quickly because in on 22<sup>nd</sup> July 1908 the railway station was renamed Oturehua, and the post office changed its name on the 1<sup>st</sup> August 1908.

This was not without controversy as there were several letters to the papers by residents who preferred the more descriptive name of Rough Ridge and there was general confusion as to the meaning of the new name.

The MP for the Ida Valley electorate Mr John Macpherson, consulted the Maori members of Parliament of which Sir Apirana Ngata was one, and on July 13<sup>th</sup> Macpherson revealed that "*The word OTU prefixed to Rehua in old Maori means "a bold rugged promontory or pedestal used for the purpose of commanding a general view and being used in commencing with "Rehua" who was an ancient God has a further glorified significance in short "a noble rugged prominence worthy of being the standing place from which the commands of the great god Rehua might be given".*"

Further research has revealed that Rehua is also a name for the star Sirius prominent in our summer night sky as well as the eight month of the Maori calendar which is January. This is described as "*the foodless month when the quivering heat is seen, the waters are dried up, and the body of man is warmed.*" (Notes on Maori Mythology, Elsdon Best 1899)

So, although I cannot find out who originally proposed the name change and why, I do believe it is a well thought out and appropriate name for a hot dry place where the summer star Sirius shines brightly above a rocky ridge.

Contributed by: Jo Ryan.

References: PapersPast ([paperspast.natlib.govt.nz](http://paperspast.natlib.govt.nz));

NZ Maori Dictionary ([maoridictionary.co.nz](http://maoridictionary.co.nz)); Notes on Maori Mythology, Elsdon Best 1899)

## HECTON CRUTCHING TRAILER

For all your crutching requirements



**Duncan Elliot**

**027 644 9564**

**(03) 444 9550**



AWS Legal, situated at 77 Centennial Avenue, Alexandra.

Dave Gibson is always happy to meet with his client base, at home or at the office. Dave deals with all clients in his efficient and practical way,



Dave Gibson

bringing with this the outstanding expertise of 30 plus years in the law business. It has been a pleasure meeting with clients during this year, and Dave has appreciated being introduced to new faces, and being involved in the wider Maniototo Community.

For further information, please visit our Website on [www.awslegal.com](http://www.awslegal.com)

The Alexandra office number is **03 440 0026** or to contact **Dave Gibson** direct **027 688 7332**

## MANIOTOTO ST JOHN UPDATE



## St John

A changing of the guard in the local St John Committee has taken place with Leslie McKnight taking on the role as the new Chairperson and Heather Dowling now as Secretary.

Val McSkimming and Denise Baddock have stepped aside after a combined service at committee level of twenty five years. We wish Leslie and Heather well. Ewan Kirk still holds the reins as the Treasurer but big plans and changes are afoot, with the national body of St John Ambulance regarding all regional finances of all the small stations throughout NZ. We will keep you posted as to where this is heading.

Maintenance to the Maniototo St John Ambulance rooms has been taking place recently with a lick of paint to key areas. The kitchen and bathroom areas are now looking clean and fresh and we are just awaiting the carpet layer to replace the carpet throughout the building.

Once again we provided 'Devonshire Teas' for the Maniototo Garden tour held in late December, it was another very successful tour, with fantastic feedback by those who travelled in and around the Gimmerburn, Wedderburn and White Sow Valley gardens.

On behalf of the Maniototo St John Committee Lesley McKnight and I (Denise) would like to extend our thanks to the following people. A huge thank you to Margaret and Peter Hore of 'Cornaig Farm', Wedderburn who hosted us for our fundraising venture. \$870 was raised for our local St John Ambulance.

Thank you to our wonderful scone makers, Morgan Grundy, Joyce, Greer, Anne Kirk, Glenis Crutchley, Noella Crutchley, Jan Duffy, Leslie and myself. To our raspberry jam makers, Noella and Joyce, thank you. To our wonderful helpers on the day, Natalie Bruhns, Dianna Whyte, Heather Dowling, our St John Youth and Penguin helpers, Anna Clarke, Hayden Clarke and Maia MacDonald, thank you an awesome effort, we served 174 'Devonshire Teas' on the day.



Peter Cheesmur and Lucy Neilson were awarded Grand Prior Awards at the St John awards held at the end of last year.

**5¢ off per litre**

**Get served your fuel and save 5 cents per litre on all cash sales!**

**Now available at McLaren's**

*To be eligible for the discount the purchase of fuel must be made in-store, during shop hours*

[www.rdp.co.nz](http://www.rdp.co.nz)



## OUT AND ABOUT



Enjoying the vast amount of rain which fell last month are Addie Graham and Mack Woodhead in a puddle behind the Railway Station in Ranfurly.



The Maniototo Golf Club ladies out and about on their mystery golf trip held recently. Guess where they are!



A rocket is launched in the street in Otarehua on New Years Eve. Photo: Stefan Jahn



Madi and Kassidy Pont, James Meehan, Pita Smith, McKenna Suddaby, Tash Smith, Nikita Wilson, Sophie Meehan, Logan Suddaby and Eddie Weir enjoy roasting marshmallows at Falls Dam over the New Year



Briar Duncan and Ella Gibson played for the Otago Country primary girls' cricket team at the South Island invitational tournament in Christchurch during the holidays. They won three out of five games, placing fourth.

## MANIOTOTO CONTRACTING

(2004) Ltd

IAN AND JUDY HORE

HAY • SILAGE • BALEAGE • MOWING • FEED SALES

DRILLING • EARTHMOVING • CULTIVATION

Yard: 20 Michell St, Ranfurly  
P.O. Box 10, Wedderburn, 9355  
Phone: 027 221 9803  
ian.maniototo@gmail.com





## HITTING THEIR STRAPS

Maniototo Pony Club riders made their presence felt at the recent South Island Pony Club Show Jumping Championships in Mosgiel.



From left Anna Wallis of Cromwell Annabel McKnight Olivia Small Alannah Stalker and Maggie Dowling competing for Maniototo Pony Club at South Island show jumping champs.

This was the first time in many years, Maniototo have entered a team and, of the twenty-five teams competing, Maniototo secured a well deserved 13<sup>th</sup> place overall.

Also, the Maniototo Pony Club have two riders (Anna Duncan and Alannah Stalker) competing in the South Island Pony Club Dressage Champs in Blenheim later this month.

*"The riders in our club are really starting to hit their straps and making their presence felt in competitions",* says Club member Harriet Rivers.

## WORLD CUP LUGE

Ben Voice (pictured with Sam Flanagan) has finished 37<sup>th</sup> out of 50 athletes from 21 countries at the Natural Track World Championships in Latzfons Italy.

This was Ben's first time at the Senior World Championships and being a junior he was one of the youngest athletes competing.



Only just a junior, Ben was one of the youngest athletes competing. Sam had to sit out this event having sustained a broken finger racing the weekend before.

Ben and Sam now move to Oberperfuss in Austria for the 4<sup>th</sup> and final Junior World Cup race of the season.


## GETTING STRAIGHT TO THE POINT

Gallaway Cook Allan is a premier Otago-based full service law firm.

Contact Nathan Adams for all your Agribusiness needs:

- » Farm conveyancing;
- » Property related work including Subdivisions, Leases and Easements;
- » Succession Planning; and
- » Corporate work including syndicates.

03 474 6725  
[nathan.adams@gallawaycookallan.co.nz](mailto:nathan.adams@gallawaycookallan.co.nz)  
[www.gallawaycookallan.co.nz](http://www.gallawaycookallan.co.nz)



**GALLAWAY  
COOK  
ALLAN**  
LAWYERS



## Vetlife Ranfurly

Vetlife Ranfurly service a large range of clients throughout the Maniototo area.

Our locally based vet and technician are always available to help with your production, lifestyle or companion animal health requirements. Pop in for a chat or give us a call on 03 444 9700 to see how we can help you and your animals.



**8 Northland Street Ranfurly**



...Continued from front page

Richard and Cheryl Smith from Ranfurly Auto Super Shoppe came on board as major title sponsor and, of course, Speights helped keep everyone hydrated. The Maniototo Stadium provided the venue for the seriously social aspect of the event.



Naseby vs Ranfurly team photo in Naseby.

Consisting of teams from Alexandra, Dunedin, Otarehua, Palmerston, Macraes, Ranfurly, Naseby, Kaitangata, Gimmerburn and Patearoa, matches were played over two days around the Maniototo.

*"Some of the cricket was outstanding, some of the socializing even better but the comradeship was unbelievable. As expected."* says one of the organisers, Paul Dougherty.

In total, the Maniototo Big Bash generated \$1320 to Harry's trip to America (the winning team from Alexandra kindly donated their \$500 prize money).



Two Gimmerburn Force openers Geoff Blakely and John Smith.

ED: A "Give A Little" page has been set up to get Harry the help he needs. If you'd like to donate head to 'Help Harry Walk One Day'.



# Jump'n'Jack

digger hire

**Dry Hire 1.5 Tonne Digger**  
**\$40.00 an hour** (GST minimum 2 hours per day)  
*price negotiable for long term hire*

**With Auger**   
**\$45.00 an hour** (GST minimum 2 hours per day)

**Courtney 027 367 4954**



# CFMOTO

WWW.CFMOTO.CO.NZ



- FASTEST GROWING MOTORBIKE BRAND IN AUSTRALIA
- INTERNATIONALLY CERTIFIED TO ISO9001:2000 AND TS16949 STANDARDS
- CV-TECH CANADIAN TRANSMISSION - BOSCH FUEL INJECTION
- 2 YEAR WARRANTY
- ATV AND UTV IN STOCK NOW
- MORE BANG FOR YOUR BUCK



**Ranfurly 03 444 9160**



## ANDREW P. HAYES

**BUSINESS AND TAXATION CONSULTANT,  
OAMARU**

Eden Street, Oamaru P.O. Box 168, Oamaru  
 Telephone: (03) 434 8593 Mobile (027) 221 6343  
 Fax: (03) 434 8586  
 Email: [andrew@andrewphayes.co.nz](mailto:andrew@andrewphayes.co.nz)  
 at the Maniototo Service Centre Pery Street,  
 2nd Thursday each month



# A new era of **broadband service for Central Otago** is coming...

Unifone is extending its Otago network into this area to deliver unlimited high speed internet to your location!

Your wait for fast, reliable broadband is almost over. Unifone's WiFi Broadband service is currently being rolled out across Central Otago, including the Maniototo. Our team of technicians are working to construct a network of modern, high speed radio transmitters that will bring high quality, cost effective broadband to you.

Have a look online at which plan might suit you or give us a call. We have plans for people with simple internet needs, right through to plans that will suit the most demanding of power users. Best of all, our plans come with unlimited data. When you are with Unifone, data caps become a thing of the past.

We own the broadband infrastructure we use to deliver service which means we can be more innovative, flexible and adaptable when providing you with a connection. We can even help with phone lines, broadband and data networking around your farm or business or linking your business to just about anywhere you can imagine.

We're not a 'one size fits all company' and we think you'll like that.



**unifone.net.nz      0800 894 114**

## CLACHANBURN COMMENT

In recent days of heat and wind the Maniototo has dried up considerably. But let us remember the lovely day we locals and visitors from outside the district enjoyed on the Garden Club's open day after Christmas. The gardens were all looking very happy, and rightly so, still green and fresh and flourishing. The rain we had had in abundance was evident in the growth of the roses, delphiniums some two metres tall, as well as shrubs and trees, and all set off with green lawns. Gardeners had worked hard, growth means work. I always enjoy the wide variety of gardens we can put on show – large, small, established and new, and gardeners of mixed ages. It is a great get together and the organisers put a wonderful programme together.

Several weeks ago now, I heard that winds caused some shelter trees to fall over – when the ground was wet some trees and shrubs succumbed, the roots were rocked and over they went. A problem for farm gardens including Clachanburn, is the shelter trees which are often pine trees and old, is the question of how to manage them and at the same time not to let other garden trees suffer. It is all about management and of course the ideal plan is to replant behind them, get them up to a good height, and then remove the old ones. We do have some planted on the south side behind the big old pines, and last year side trimmed the old ones, and this year hopefully top them, and this will give the younger ones some more light and hopefully more growth too, before the old pines are finally felled. It can be with catastrophic results if old shelter belts around the garden are removed, leaving garden trees with no wind protection. I have seen the results of this, and it is very sad when fifty year old oak, copper beach and other English trees have died from exposure to wind when there microclimate has totally changed.

Now it is time to lift up the height of the mower, mulch plants, summer prune to shape and reduce excess growth on trees and shrubs. Enjoy the produce from the veggie patch, it is a great month to enjoy the wide variety which is now ready to eat.

Happy gardening

Jane

### A'COURTS FIREWOOD

Ph: (03) 444 9012 or  
(027) 430 7969

DRY pine, oregon and  
blue gum available  
now



## OUR LAND GIRL

Hannah has swapped her black long dress for dungarees and straw hat and she has joined the men in the Military Room.

With the majority of the fit active males overseas fighting during the 1940's there was a shortage of farm labourers but production had to continue as it was essential to supply the United Kingdom and the troops with food and clothing. When the government called on the women to respond and become part of the New Zealand Women's Land Army, city and country girls immediately signed up and were allocated to farms. Over the following five years production across the country increased by 13%

Despite intensive research only one government paid Land Girl has been identified for the Maniototo, that being Mollie Strode. Mollie did all farm tasks except for the week long annual muster out the back, mixed bunking was not on the job description! When the service men returned they went back onto the farms and women were expected to step aside, not all went quietly, many married farmers and became part of the rural political and agricultural scene while others purchased their own holding and farmed it.

Hannah has got all the work clothes except for a pair of small leather work boots, does anyone have an old pair they are willing to donate to the museum, please? Contact Maryann at 444 9191

Naseby Museum



**Call now for your  
FREE in-home  
style consultation,  
measure and quote**



Call your local style consultant,  
Sharyn Scott 027 776 6533

0800 808 300  
russellscurtains.co.nz

**Russells**  
The curtain & blind specialists



## POSITIVELY MANIOTOTO MONTHLY BUSINESS DIRECTORY



### WAIPIATA COUNTRY HOTEL

Owners Mark and Nikki welcome you

**FRIDAY NIGHT  
\$10 SPECIAL**

**Sirloin steak and chips  
Snapper and chips  
(both served with salad)  
Gourmet pizzas**

**PH 444 9470**



### Who are we?

We are a locally controlled and operated insurance broking company

**Phone: 03 477 7321**

### FARM INSURANCE, VEHICLES, HOME AND CONTENTS

With over 20 years in the Industry, we can help. Call us for advice.



#### Sue Williams

Registered Financial Adviser FSP116012

**021 712 606**

**suel@ibal.co.nz**



#### Tim Moore

Registered Financial Adviser FSP383966

**027 555 8797**

**tim.moore@ibal.co.nz**

Our point of difference is 'SERVICE',  
Our ethos is 'TEAM'

### Central Otago Sheep Handling Ltd

For all your:

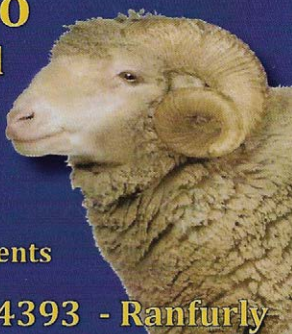
Conveyoring, Drenching,

Dipping, Tailing requirements

**Sam Pringle 0273844393 - Ranfurly**

**Locally owned and operated in the Maniototo.**

Casual workers also available so, if you need help on the farm, call now for a quote.



**03 444 9160**

**WOF inspections**

**Total Vehicle Servicing**

**Diagnostic Testing**

**Tyre Fitting & Repairs**

**Motorbike Sales & Repairs**

**Open 7-30 am- 5pm Week Days**

**8-am-12pm Noon Saturday**



### Wilson Contracting

- Baleage
- Hay
- Mowing
- Drilling
- Cultivation



**Phone Brad: 021 446 939 or Email: wilsoncontractingltd@extra.co.nz**



Aotea Electric has an electrician based in the Maniototo providing all manner of servicing, repairs and maintenance to the Manuhirikia and Maniototo areas. If you need a local electrician, please call and we'll look after you, without the long delays or huge travel costs. We can fix your appliances, connect your water pump, install your heat pump, wire your shed or anything else you might have. Coupled with our Alexandra based contracting department for bigger jobs, we can cover any electrical job you might have.

**Call Dale on 027 200 1970 or  
dale.bradly@aoteaelectric.co.nz**



Your community calendar  
+ a few extras!

**The**



**Budget**

10 Pery Street, Ranfurly  
burn729am@scorch.co.nz  
444 9729

## WHAT'S ON BURN AND WHEN - 729am / 87.9fm

<i>OFS Insurance Brokers Ltd Road Reports, Cancellations &amp; Water Notices</i>	Top of the hour 6am - 10am
<i>Waipiata Country Hotel Weather Updates</i>	Top of the hour 6am - 6pm
<i>Tussock Networks Ltd News Updates</i>	Top of the hour 6am - 6pm
<i>Central Otago Sheep Handling Buy, Sell and Swap</i>	9.30am, 11.30am and 3.30pm weekdays
<i>Vet Centre Community Notices</i>	10.30am, 2.30pm and 5.30pm weekdays
<i>The Country with Jamie Mackay</i>	12noon - 1pm weekdays
<i>Monday Night Memories</i>	7pm - 9pm Mondays
<i>Vincent George Travel 70s &amp; 80s Music:</i>	6pm - 8pm Tuesdays
<i>Country Show</i>	6pm - 8pm Wednesdays and 9am - 12 noon Sundays
<i>Rock Show</i>	6pm - 8pm Thursdays
<i>Combined Churches Choices</i>	8am - 9am Sundays
<i>McLarens Sports Round Up</i>	9.30am Sundays

For all notices placed in *Buy, Sell & Swap, Live and Community Notices* for individuals or groups, a gold coin donation would be very much appreciated (other than community groups who already make an annual donation). Thanks

### MONDAYS

Ranfurly Karate Club:	Maniototo Arts Centre, 6-7.30pm. All new and graded members welcome. Ph 444 9831
Pilates:	6-7pm, MAS Maniototo Learning Centre. 6 - 7pm. Contact 021 165 4872
Ceramics Group:	10.30am at the Reade Street Art Centre. Contact Colleen on 444 9443
Monday Night Memories:	Burn 729am / 87.9fm 7-9pm, 444 9729

### TUESDAYS

Twilight Golf:	6pm, Enquiries to Bruno on 027 224 02242. All welcome.
Steady As You Go Classes:	10.30am, Maniototo Stadium Rugby Club Rooms. Call Joan 444 9629, Karen 444 9814 or Maureen 444 9493
70s & 80s Music:	Burn729am / 87.9fm. 6 - 8pm

### WEDNESDAYS

Thai Chi:	Classes 10 - 11am. Maniototo Arts Centre. Inquiries 444 9831
Catholic Women's Fellowship:	Op Shop. Open 10.30am - 4.30pm. Contact Francie on 444 9243
Line Dancing:	Arts Centre @ 3:30pm - 4:30pm. Contact 444 9612
Maniototo Bridge:	7pm Wallace Memorial Rooms. New members welcome. Call Ang on 444 9231
Pilates:	6-7pm, MAS Maniototo Learning Centre. 6 - 7pm. Contact 021 165 4872
Country Show:	Burn729am / 87.9fm. 444 9729 from 6pm

### THURSDAYS

Rock Show:	Burn 729am. 6pm - 8pm. 444 9729
------------	---------------------------------

### FRIDAYS

Art group:	10.30am at the Reade Street Art Centre. Contact Colin on 020 4118 8971
Catholic Women's Fellowship:	Op Shop. Open 10.30am- 4.30pm. All welcome. Contact Francie on 444 9243
Ranfurly Playcentre:	9.30am-12noon. Call Jenny on 021 158 4698

### SATURDAYS

Maniototo Golf:	Tee off 12.45pm. Contact Club Captain - Alan 444 9129
-----------------	---

### SUNDAYS

Maniototo Toy Library :	1.30 - 2.30pm - Pipe Band Rooms, Ranfurly. Contact Jamee Howell 027 473 6941.
Presbyterian Church:	10am Family Church Service at Ranfurly
Sunday School.	Presbyterian Church. For details - Call Ro on 444 4700
Naseby Golf:	Club Competition. 12.30 Tee off. Contact Carol 444 9949.
Catholic Church:	5pm Mass, Sacred Heart Catholic Church, Stuart Road, Ranfurly
Choices:	8am - 9am. Burn729am/87.9fm
Country Show:	9am - 12 Noon. Burn729am/87.9fm

**Maniototo Spinners**  
**Plunket Playgroup**  
**Te Kakano**  
**Business Breakfast**  
**Garden Club**  
**St Hilda's Anglican Church**

2nd and 4th Monday  
1st Monday  
2nd Wednesday  
3rd Wednesday  
1st Thursday  
1st Sunday

10am - 3pm  
10am-12noon  
From 10am  
8am - 9am  
7.30pm  
10.30am

Tracey 027 654 1977 or Karen 444 9814  
Sarah 444 8284  
Maniototo Hospital 444 9420  
Morgan on 444 9023  
Mary Wright 4449 435  
St Hilda's Church, Ranfurly

