



# Positively



# MANIOTOTO!



Phone Amie on  
(027) 264 3766 or email  
info@maniototo.co.nz

Download on line from [www.maniototo.co.nz/contacts-links](http://www.maniototo.co.nz/contacts-links)

SEPT 2015

## FUTURE OF FESTIVAL

It is with regret that the Art Deco committee has decided that there will not be an art deco festival in February next year. It was felt after the hugely successful Decocode (Art Deco festival and Cavalcade) in 2013 that it was time for a change. In February last year there was 'Festival in the Park' - an afternoon of entertainment and markets beside the railway station. This event included some elements of our traditional art deco festival and it provided a cheerful atmosphere when the Rail Trail Duathlon competitors arrived in the town.



Over the years, the art deco committee has found it increasingly difficult to put on the annual festival. The reasons are varied. The time of year is very busy and our event is always competing with other things on. Costs are increasing particularly in the area of compliance and fundraising efforts cannot cover all the costs. This increases the financial risk for the committee if the budget cannot be achieved. Also a lack of helpers on the day means a small group of people work very hard to ensure a safe and enjoyable event.

The committee is proud of what has been achieved in staging very successful festivals that have projected a very positive image of the Maniototo to the outside world. The Art Deco Festival was about attracting people to the area and publicity before, during and after the event captured the interest of people throughout the country. The Festival also benefited many community groups through providing the opportunity to fundraise at the event and businesses in Ranfurly and beyond also benefited financially.



There are significant social and economic benefits in having an event that attracts visitors to our area. The Art Deco committee would like to think that a festival of some kind is possible in 2017 but the organising and running of it would need more people involved. Perhaps as a community we could pool our talents and skills with representatives from different groups working together to create a new summer festival?

If any groups or individuals are interested in working as part of a festival group please contact Positively Maniototo and let's talk.

## SPORT, SPEECHES & CELEBRATIONS

August has been a busy month celebrating sporting and speaking achievements as well as educational excellence!

Our Maniototo Maggets (Premier grade ladies hockey team) defeated Matakanui Mudflaps in a semi-final at Cromwell 4 goals to 2 on Saturday 2nd August but the final was not to be theirs against Alexandra the following weekend. As already covered in the last edition of Positively Maniototo, the girls had a fantastic season after starting at the bottom of the table! Well done to you all. The future of **sporting success** is in good hands as some positive final results include Maniototo Kiwi Sticks (Year 5 & 6) Thursday team and Kwik Sticks (Year 7 & 8) both winning their respective finals over Alexandra. Awesome!!



Later in the month the **Maniototo Primary School Speech Competitions** drew a good crowd of parents, grandparents and friends to support the children at the Ranfurly Town Hall on August 21st. Local radio announcer Zee Boyle emceed proceedings with the judging undertaken by Diane Paterson and Suzy de Louw.



Story continued page 8 ...

## FORWARD PLANNING 2015

<b>SEPT</b> Sun 6th	Fathers Day dedications show on Burn (page 10)
Thurs 10th	Sheep meat and Beef Levy Referendum voting closes (page 5)
Wed 16th	CODC Job Vacancies applications close (page 7) REAP Activities Day (page 4)
Thurs 17th	Expressions of Interest for Community Trust of Maniototo Trustee close (page 6)
Fri 18th	Friends of the Hospital Meeting
Sat 19th	Maniototo Maggots & Maggets Prize giving Ranfurly Hotel (page 9)
Fri 25th	Marissa Graham Raffle night (page 4)
Sat 26th	Go Maniototo Workshops begin (page 7)
<b>OCT</b> 9th & 10th	Breast Cancer Foundation Pink Ribbon Appeal
Thurs 15th	National Shake Out Day
Sat 24th	Burn 729am Maniototo Markets
<b>NOV</b>	Burn 729am Maniototo Community Cup at Patearoa - date to be confirmed
Sat 14th	Maniototo Rodeo Club fundraising trek
14th & 15th	Megan Huffadine Painting Workshop (page 9)
Sat 14th	Naseby Community Plan Workshop (page 3)
20th-22nd	Lions District 202F Convention
<b>DEC</b> Sun 27th	Maniototo Rodeo at Waipiata
Thurs 31st	Naseby Annual Book Sale (below)



## SCHOOL 2015 TERM DATES

<b>TERM 3:</b>	Monday 20th July - Friday 25th September
<b>TERM 4:</b>	Monday 12th October - Wednesday 16th December (half day only)

## ANNUAL BOOK SALE

Naseby Information Centre is holding the Book Sale, Naseby Hall on Thursday the 31st December and book donations can be left at Maniototo Paint and Hardware in Ranfurly.



New Zealand Couriers are happy to support your community publication  
Positively Maniototo

**Call 0800 800 841 for your courier needs**

## WELL DONE!

Congratulations to Dominick Geoffrey for becoming the Maniototo Bridge Club's first youth club member to attend a Bridge Youth Seminar which was held in Wellington in early August. These seminars are held annually for young, keen bridge club members between the ages of 13-25 and Dominick, at 17, attended for the first time this year. There were 56 entries from throughout New Zealand and Dominick was placed 1<sup>st</sup>, 5<sup>th</sup> and 8<sup>th</sup> in three different events acquitting himself extremely well!

Well done Dominick. Your friends at the Bridge Club are extremely proud of you!

**President**  
**Maniototo Bridge Club**

## MANIOTOTO BRIDGE CLUB RESULTS

<b>22 July</b>	<b>Polar Plunge</b>
1 <sup>st</sup>	Basilia MacDonald – Tracey Weir
2 <sup>nd</sup>	Diane Barton – Angela Wilson
3 <sup>rd</sup>	Jill Crosbie – Doris Gibson
<b>29<sup>th</sup> July</b>	<b>Directors</b>
1 <sup>st</sup>	Judy Elder – Doris Gibson
2 <sup>nd</sup>	Dominick Geoffrey – Basilia MacDonald
3 <sup>rd</sup>	Diane Barton – Donella Hore
<b>5<sup>th</sup> Aug</b>	<b>Championship Pairs</b>
1 <sup>st</sup>	Donella Hore – Tracey Weir
2 <sup>nd</sup>	Diane Barton – Suzy de Louw
3 <sup>rd</sup>	Doris Gibson – Angela Wilson
<b>12<sup>th</sup> Aug</b>	<b>Championship Pairs</b>
1 <sup>st</sup>	Doris Gibson – Angela Wilson
2 <sup>nd</sup>	Donella Hore – Tracey Weir
3 <sup>rd</sup>	Diane Barton – Suzy de Louw
<b>19<sup>th</sup> Aug</b>	<b>Polar Plunge</b>
1 <sup>st</sup>	Basilia MacDonald – Tracey Weir
2 <sup>nd</sup>	Joan Levido – Frances Wood
3 <sup>rd</sup>	Jill Crosbie – Doris Gibson

## HOUSE FOR RENT IN RANFURLY

Comfortable, unfurnished, three bedroom home  
Garage and carport  
No pets please  
\$190 per week

Phone Ron on 021 029 22901

## PATEAROA PLAYGROUP

Patearoa Playgroup has started up again on  
Every 3rd Monday of the month  
10am – 12 midday at Patearoa School



## GIMMERBURN HISTORY BOOK

If anyone has a spare copy of The History of Gimmerburn - the land God forgot to finish, that you are willing to sell please contact Heather on 444 9465.

## NASEBY COMMUNITY SURVEY

Preparations are underway for the development of Naseby's *third* Community Plan. We are currently gathering information to find out what the people of Naseby value in their town and where they would like to see it head in the future.

A community survey will be posted to households early in September. Please take a few minutes to write down your thoughts and return it to us so that we can include your comments and views in the community plan development process.

This community survey is part of several information gathering processes that are being used to shape Naseby's new Community Plan. Visitor and Business surveys were conducted earlier this year and a community workshop is scheduled for 14 November at the Naseby Hall. It is the feedback from these consultation processes that provide the content of our community plan.

For more information about the Naseby Community Plan or the processes involved in developing this new Plan, please contact Naseby Vision Chairperson John Crawford (jcrowford@nhnz.tv) or Council's Community Development Manager Paula Penno (paula.penno@codc.govt.nz).



## GRAHAM ELECTRICAL

**Domestic & Commercial Contracting**  
**Home Appliances**  
**Fujitsu Heat Pumps**  
**Irrigation & Stock Water Pumps**

Fisher & Paykel

FUJITSU HEAT PUMPS

SAMSUNG

Westinghouse

Panasonic

LG

freeview satellite

Electrolux

Haier

**SHOWROOM:** 29 Charlemont St, Ranfurly  
 Ph/fax 03 4449-314  
 Mob: Doug 0274388380 or Rob 0274478627  
 Email: [grahamelectrical@xtra.co.nz](mailto:grahamelectrical@xtra.co.nz)

## TIME TO RETIRE

Murray Simpson started driving for Central Motorways in 1985 and, having turned 80 in March, decided retirement was on the horizon. Murray has very much enjoyed driving the school buses over the years and has met lots of lovely children. Murray also drove many sports teams to various areas for games such as Wanaka, Queenstown, Dunedin, Roxburgh, Oamaru and Waimate. Travelling to these out of town places involved long hours and, needless to say, it took some time to arrive home with so many requested stops. "Some players had weak bladders", laughs Murray. During all those years of driving, Murray never had an accident and also serviced the buses for at least ten years. When required, he will relieve as a school bus driver but Murray is more than happy to officially end his role driving the Maniototo community here, there and everywhere. Murray was highly regarded by Murray Jenkinson (Manager of Central Motorways – now Go Bus Transport).



Murray is pictured with the late Neil Aitken meeting his great-grandson, Jordan Sangster (then 6 years old) off the bus back in 2002.



OFS Insurance Brokers

Locally owned



**Hunter Stevenson**  
 Insurance Broker

**Need Personal Non-biased Insurance Advice for ...**

Your farm or business?  
 Your home and contents?  
 Your life and health?  
 Your income protection?

OFS Insurance Brokers are locally owned and managed insurance specialists offering personal advice and a no-obligation chat about your insurance needs.

**Call Hunter today**

p: 034716800  
 f: 034717466  
 m: 027 438 1288  
 e: [hstevenson@ofs.net.nz](mailto:hstevenson@ofs.net.nz)

## PHOTOGRAPHER AWARDED

Professional photographer and part time Ranfurly resident, Janyne Fletcher has won gold and had her best year to date at the national Iris Awards held in Queenstown earlier this month.



The Epson/New Zealand Institute of Professional Photography (NZIPP) Iris Awards attract thousands of top quality entries from around the country and overseas each year.

Janyne's thought provoking tribute to the World War One soldiers from rural New Zealand was awarded a coveted Gold award. Her other prints which prominently featured Central Otago landscapes and illustrations achieved a further silver distinction, three silver and four bronze awards.

The award winning images can be viewed on Janyne's blog, which can be found on [www.janynefletcher.com](http://www.janynefletcher.com), where she shares news about the creative development of her images. A selection of Janyne's fine art photography is available for sale at "The Practice, Ranfurly".



## 35 YEARS OF DEDICATION

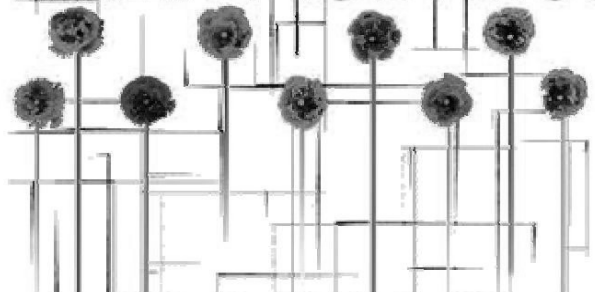
Last month Alan and Barbara Reid (below) received a plaque and flowers for 35 years of service to the Waipiata Dart Club. Barbara and Alan joined the club three weeks after it started in 1979. Barbara was Secretary on and off for 15 years and baked for raffles each week. Alan painted the club rooms over the years.



Both were made life members in 2004 and Barbara resigned last year for health reasons. Eight club members were in attendance at the presentation on the 15th of August and the plaque read:

"A huge thank you and appreciation for the 35 years of passions, enjoyment, dedication and hard work to the Waipiata Dart Club."

# Maniototo REAP Activities



Wednesday 16 September 2015

Ranfurly Bowling Club

Tea/coffee available from 9.00am

Two workshops available - \$5 per workshop *please book*

**9.30 - 10.30am**

Valerie from Central Colourplus in Alexandra

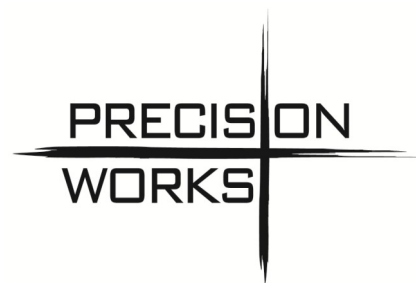
Valerie will talk about different paint effects including chalk paint and ideas to refurbish furniture within your home. Valerie will discuss colour and also lightshade making with fabric and wallpaper. She will give us tips on how to change a room by adding colour and special effects such as wallpaper.

**10.45 - 11.45am**

Jenny Craig - Making Your Own Cleaning Products

Jenny has been making her own cleaning products for many years and demonstrated this at a number of REAP courses. From washing powder to 'spray and wipe' products, Jenny will show us how easy and inexpensive it is to produce our own. She also has a range of natural skincare products that she makes including body and lip balms, facial oils as well as soaps that she will bring along.

Please phone REAP on (03) 448-6115 or 0800 267-327  
Or email [admin@coreap.org.nz](mailto:admin@coreap.org.nz)  
[www.coreap.org.nz](http://www.coreap.org.nz)



**Agricultural Spraying  
Precision Drilling  
Direct Drilling**

**Talk to James Pyle about Fodder  
Beet and Spray and Drill packages  
0274479822**

**Proudly servicing  
the Maniototo**

## WHERE ARE THEY NOW?

This month Positively Maniototo caught up with Trevor Hunter in Otaki.

### What is your link to the Maniototo?

I was born in the Maniototo Hospital in 1954 and resided there until 1994. My parents are Ray and Shirley Hunter who still reside in Ranfurly.

### What did you do when you were here?

I left school in 1969 and did a joinery and building apprenticeship with my father. When that was completed I worked for a year with what was Kyeburn Contracting and then formed a partnership with my father and in later years we had a staff of eight carpenters and three joiners. In 1975 I married the local Principal's daughter Janet Rutherford (below) and we had three children.



When the rural decline hit in the mid-eighties I was employed with the Maniototo Hospital Board as a Maintenance Officer and "Ambulance Driver". After some time I was sent to

Auckland to begin my training to become a qualified Ambulance Officer which I attained in 1988. At this stage we set up the local St John Ambulance and I was the Officer on duty during work hours and volunteers did nights and weekends. I did my Paramedic Training in 1992 and eventually moved north in 1994.

### What did you do when you left here?

Leaving the Maniototo was not an easy thing to do as I had been there a long time but with the children fast becoming teenagers and wanting to see more of the country we decided to head North for about two years. We moved to Otaki which is on the coast an hour north of Wellington and we're still there. It is a wonderful place (just like Ranfurly) but not as cold in the winter! It has a wonderful climate with minimal extremes and a lovely beach.

I am the St John Ambulance Station Manager here with six fulltime staff and 25 volunteers. We have two paid staff during the day and one paid officer with a volunteer at night. The workload is busy and we often do about 5000kms a week.

### What are the highlights of your 'new' life?

My highlights living here are having an exciting and rewarding job, having the beach on my doorstep where as often as I can I take my boat out fishing, being close to Wellington which is a neat vibrant city. Having the sea about 300 meters away makes for a very relaxed lifestyle.

### What do you miss the most about the Maniototo?

I still miss the Maniototo but most of all it is family and friends that I miss the most. I love visiting the Maniototo and regard the "Pigroot" as mine when I turn off at Palmerston. There is nothing that matches the feeling of returning on a clear day as you descend onto the plain. I still enjoy visiting family and good friends on the Maniototo but don't get down there often enough.

## CANCER CUSHIONS

As part of nationwide Rural Women New Zealand initiative to make cancer cushions for women recovering from breast cancer a working bee was organised at Patearoa Bowling club. Twelve ladies met on Sunday 15th August for the sewing session and on 21st August thirty-nine beautiful cushions were delivered to the Dunedin Cancer Society. Many thanks to Patearoa Bowling Club for use of their club rooms and to Doris Gibson for organising the working bee.



PICTURED ABOVE: Noela Crutchley, Robyn Pope, Donella Hore, Doris Gibson, Liz McSkimming, Rae Paterson, Kim Gibson, Wendy Kearney, Diane Paterson, and Joanne Paterson. Also assisting the project Margaret Hore and Natalie Bruhns.

## STEADY AS YOU GO

Falls are not a natural part of ageing. Falls are preventable. Save yourself from a fall by attending SAYGo classes to improve your strength and balance. The classes are designed for men and women and have been shown to provide continuous improvements in strength and balance over time.

Ranfurly classes are Thursdays 10-10.30am at the St John Ambulance Rooms. It's only \$2 per session.

Contact Joan Pringle 444 9164, Karen Munro 444 9814 or Maureen Miller on 444 9493.

Established 1929  
**Russells**  
CURTAINS & BLINDS MOBILE

Call your local consultant

**SHARYN SCOTT**

**027 776 6533**

for a free in home  
consultation and quote

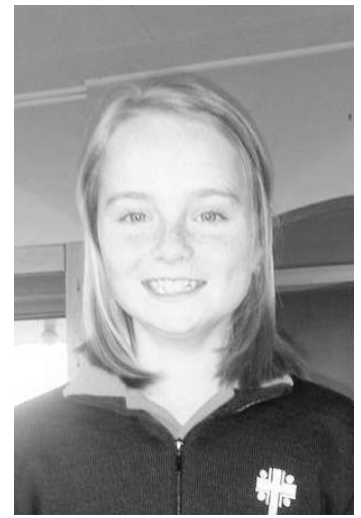
Sharyn can help you find the perfect drapes or  
blinds to fit your window, budget and décor

Custom Drapes & Blinds You'll Love  
Call Russells on 0800 808 300  
[www.russellscurtains.co.nz](http://www.russellscurtains.co.nz)



## HAIR NOW, GONE TOMORROW

Last year, Positively Maniototo covered a story on a group of young ladies who donated their hair to a company in Dunedin called Freedom Wigs. For many New Zealanders, long term extensive hair loss (mostly those with Alopecia Areata, Totalis and Universalis) is an emotional and terrifying journey. The Maniototo is known for consistent contributions to the work of Freedom Wigs and, this time, it's Chloe McAuley, (below), Maggie Dowling (right) and Hannah Cormack (far right) who've donated their lovely long hair to this wonderful cause.



Women and young girls who wish to wear a wig often desperately want long hair. In order for this to happen the hair needs to be rather long to allow for the process at both ends. The pony tail needs to be 14 inches or longer and non-coloured. This is why the hair of a certain age group is best as many young girls such as Chloe, Maggie and Hannah have enjoyed long locks and have not yet started to experiment with colour.

Well done girls and enjoy your new styles!



Expressions of Interest – Trustee (voluntary position)

A vacancy exists for a Trustee to sit on the Community Trust of Maniototo

- Do you have a strong interest in the many sporting, cultural and charitable aspects of community life within the Maniototo?
- Have the ability to fairly assess without prejudice or predetermination applications for funding against prescribed criteria that must bring benefit to the community?
- Have experience to work as part of a team to manage and grow an investment portfolio?

If so please make an application in writing detailing your relevant community experience and why you would like to be considered for this position in the first instance to:

Expressions of Interest – Trustee Position

Chairman Maniototo Community Board  
C/- Janice Remnant  
Property and Facilities Officer  
15 Pery St  
Ranfurlly

Applications close: **5.00pm Thursday 17 September**

## Ranfurlly

### Eukanuba Premium Performance

Now with farmer loyalty card -

Get 11th Bag **FREE**

Also go in the draw

to win 1 of 2 drinks  
fridges



## Veterinary Centre

**Phone 03 444 1020**

Maniototo Community  
Arts Council presents...

## 'Give it a go Maniototo' workshop series

Local Artists sharing skills and talent with other locals

*For the Adults.....*

- \*Wood turning with Karen Munro\*
- \*Photography with Janyne Fletcher\*
- \*Hair and Makeup Artistry with  
Renee Weir and Becky McAuley\*

*For the Kids .....*

- \*Chalk the walk- Footpath Art\*
- \* Hooray for Clay with the Pottery group\*
- \*Make a fluffy sheep -Spinners and Weavers group\*
- \*Stitch and sew beautiful Christmas decorations with the  
Embroidery group \*

26 September –11 October (Next school holidays)

**Limited Spaces**

**\* More details coming soon \* For further information contact Kim 4449652\***



## PAINTING WORKSHOP

Maniototo Community Arts Council brings you another Megan Huffadine two day painting workshop.

The Maniototo Arts Council are very pleased to welcome back Megan Huffadine (right), a well-known Bannockburn based artist with many years teaching experience. Megan currently teaches painting classes in Cromwell as well workshops in rural communities.



This is a two day workshop using acrylic paint, layering mixed media and using a variety of tools to create rich textural surfaces to paint on. This will include working between realism and semi-abstract and finding a personal approach to painting.

Megan will introduce you to innovative techniques for working with a variety of materials, including pastels, oil sticks, a range of water soluble pencils, impasto and texture pastes.

**Maniototo Community Arts Centre  
November 14th and 15<sup>th</sup>**

**Class hours 9:30 am – 4:30 pm**

**Maximum of 15 people**

Suitable for beginners through to more advanced.

An opportunity not to be missed!!

**Contact Kim for more details 4449652**

## LIBRARY TEAM LEADER MANIOTOTO

### Permanent Part-time

We require a permanent Library Team Leader to work at Maniototo Library. The position includes the day-to-day management of the library, providing innovative solutions in a changing environment to an important community asset.

The successful applicant will have the following attributes:

- Be enthusiastic and have a friendly persona.
- Excellent communication skills and the ability to engage well with the clients, community and other key stakeholders.
- Experience in managing a team of people.
- An understanding of business management.
- A high work rate, with sound planning, administration skills and attention to detail.
- Good knowledge of the library environment.

A copy of the job description may be obtained via Council's website ([www.codc.govt.nz](http://www.codc.govt.nz) under Vacancies), or email Tracye Stedman [tas@codc.govt.nz](mailto:tas@codc.govt.nz).

All applications to include a cover letter, CV and address the key selection criteria. Make sure you wow us with your cover letter, be specific about your experience and what you are looking for now.

Applications should be addressed to the Chief Executive Officer, Central Otago District Council, P O Box 122, Alexandra 9340 and sent via email to [tas@codc.govt.nz](mailto:tas@codc.govt.nz), and close Wednesday 16 September 2015 at 12 noon.

## RANFURLY VISITOR INFORMATION CENTRE, SERVICE CENTRE & COMMUNITY LIBRARY

### Shared Casual Position

We are looking for staff to assist us with shifts in the Ranfurly Visitor Information Centre, the Service Centre and the Community Library on a casual as required basis.

The Visitor Centre runs a year round 7-day operation and the Service Centre and the Library are open Monday to Friday. You may be required to work on public holidays and weekends.

For this customer service role you will need to:

- Demonstrate experience in administration and customer service skills.
- Possess excellent communication skills, and enjoy working with people from a wide range of organisations and backgrounds as well as national and international visitors.
- Have proficient computer skills, in particular, word processing, Excel, internet and email.
- Be self-motivated and able to work unsupervised.
- Enjoy books, a passion for connecting people with reading and information is important.
- Sales experience and local knowledge would be an advantage.

All applications should include a cover letter, CV and should be addressed to the Chief Executive Officer, Central Otago District Council, P O Box 122, Alexandra 9340 and sent via email to Tracye Stedman at [tas@codc.govt.nz](mailto:tas@codc.govt.nz). Applications close Wednesday, 16 September 2015 at 12 noon.

[www.codc.govt.nz](http://www.codc.govt.nz)

PO Box 122 Alexandra 9320  
03 440 0056 | [info@codc.govt.nz](mailto:info@codc.govt.nz)



[www.codc.govt.nz](http://www.codc.govt.nz)

PO Box 122 Alexandra 9320  
03 440 0056 | [info@codc.govt.nz](mailto:info@codc.govt.nz)



## SPORT, SPEECHES & CELEBRATIONS cont ...

Both judges were very impressed with the high calibre of the finalists in the two categories. Years 3 and 4 retold many of our favourite fairy tales supported by props and costumes. Years 5 to 8 prepared and presented an original and persuasive speech on a subject of their choice. Some chose to tackle political or topical issues while others opted for subjects in the human interest category.

The judges commended the participants for the obvious hard work that had gone into preparing their presentations and also congratulated them on having the confidence to stand in front of a room full of people to deliver their speeches. Choosing the place-getters was a particularly difficult task – see list below.

Libby Francis from St John's was presented with a special award for her self-assured and persuasive sign-language speech on the joys of living in Naseby.

The Maniototo community can be rightfully proud of the very talented and confident youngsters coming through our schools at this time!

Results: Yr 3 Retell - Annie Dowling and Kiera O'Neill, Yr 4 Retell - Abby Ferdinands, Yr 5 Speech - Briar Duncan, Yr 6 Speech - Andrew Fetalver, Yr 7 Speech - Tom Weir and Yr 8 Speech - Tia Dougherty.

A full list of results is in the latest Maniototo Area School newsletter and can be downloaded from [www.maniototo.school.nz](http://www.maniototo.school.nz).

Next up on the calendar was the **Primary School Cross Country** where Maniototo, St John and Strath Taieri Primary Schools combined at Maniototo Stadium to run their hearts out! The rain came and went a little but stayed away before settling in after the prizegiving! Distance, of course, varied for each age group and there were some who had to really dig it in to complete - good on you!



*LEFT: Doug Smith clears the hay bales before sprinting the home stretch and taking out first place in the Year 8 race.*

*BELOW: Rosa Herlihy and Alyssa Janerol delicately take on the hay bale hurdle before heading over the finishing line.*



*Billy Dougherty, Andrew Fetalver and Harry McAslan receive their certificates.*

Results: Yr 0 - Jacob Sutherland and Katelyn Hughes, Yr 1 - Thomas Helm/ Fred Dowling and Tessa Steele, Yr 2 - Ethan McSkimming and Isabelle Helm, Yr 3 - Nic Pieterse and Georgia Graham, Yr 4 - William Tisdall and Peta Smith, Yr 5 - Max Hore and Hannah Cormack, Yr 6 - Billy Dougherty and Kate Kinney, Yr 7 - Ben Tisdall and Jade Shepherd, Yr 8 - Douglas Smith and Rebecca Kinney.

Again, a full list of results is available on [www.maniototo.school.nz](http://www.maniototo.school.nz).



To top off a great month of Holly Thompson and Ashleigh Smith were selected for the **Class Act Awards** in 2015. Two students from every school from Otago were presented with the Class Award by John Key along with a \$6000 Leaders of Tomorrow scholarship for University. Holly says, "It was a great experience meeting John Key and getting a few 'selfies', however all the TPP protesters outside was something quite interesting and unexpected!"



Ashleigh also headed to Wellington for the Commonwealth Youth Parliament meeting where future leaders of today learn about diplomacy, international politics and the place of the Commonwealth in the modern world.



## MASSAGE WITH MEGAN

Advertorial

Megan Burke is still flat out with full time study for a Diploma in Advanced Therapeutic Massage but is in Ranfurly every Thursday working from the Maniototo Hospital. She had a great first season working with the Maniototo Maggots with excellent results with some players. Megan attended the Burn 729am Ladies Big Day Out. "It was great fun and I look forward to attending any upcoming events in the area."



Megan Burke works on Vaughan Dowling at a rugby training practise.

Please feel free to contact Megan via phone or text on 027 446 3066, email to megeburke77@gmail.com or FB (Megan Burke Massage Therapist ) to discuss your needs.

*Please note: \$25 fee for not cancelling an appointment 24 hours prior*

## AWAY TO ADELAIDE

Triathlete Marissa Graham will again be representing New Zealand at the Duathlon World Champs in Adelaide as well as heading back to Hawaii to the XTERRA competition. Marissa has an impressive list of achievements either winning or placing in events such as the Mototapu Triathlon, Hutt Valley Crazyman, Craters Classic and New Zealand XTERRA. "All races are self funded so it is necessary to fundraise," says Marissa. A raffle night will be held on Friday 25th September at the Ranfurly Hotel. "The support of the Maniototo has been overwhelming and I sincerely thank you for your continued assistance."



Marissa with Mum Jo before the World Champs in Maui October last year.

## WINTER GAMES CURLING

Maniototo Curling International hosted the 2015 Audi Quattro Winter Games last week. A real highlight was the trialling of the proposed mixed doubles rule changes for the first time under tournament conditions. These changes are designed to 'rev' up the sport and make it more TV friendly and develop spectator interaction. WG Curling Manager Sam Inder says "There was a great local level spectatorship and we definitely saw increased coverage through TV3 and worldwide streaming".

Sean Becker took over the usual position of father Peter as coach of his brother Scott and sister Bridget (below). Although local favourites, team Becker didn't manage to reach medal status but are always great to watch.



Canada, USA and Finland entered top level teams to take out the medal count. "We can be proud of our area for hosting international level curling competition, the success of which was greatly assisted but the local Curling fraternity volunteers" says Sam.

## MAGGOTS AND MAGGETS TO CELEBRATE

On Saturday the 19th of September the Maniototo Maggots and Maniototo Maggets will be holding their rugby and hockey prize giving and breakup at the Ranfurly Hotel Lounge Bar.

The clubs welcome all players, sponsors and supporters to come along and finish the year off on a high note.

There will be happy hour beer and wine from 5.30pm with a two course buffet meal and speeches from 7pm.

Cost of \$25 per head (door charge).

**LIVE BAND 'Alias'** will play in the main bar from 9pm until late.



**McLaren**  
AG & AUTO FARM MACHINERY

We specialise in all Agricultural & Automotive Repairs

**With fully equipped service vehicles and factory trained Technicians No Job is too Big or too Small!**



Phone 44449160 or 4449747  
office@mclarenc.net.nz  
6 Mitchell St  
Ranfurly



*'I wandered lonely as a cloud  
That floats on high o'er vales and hills,  
When all at once I saw a crowd,  
A host, of golden daffodils;  
Beside the lake, beneath the trees,  
Fluttering and dancing in the breeze'*

*William Wordsworth*

It's nice to welcome 'Spring' to the Maniototo after a very mixed bag of weather over the last couple of months. We would like to take this opportunity to thank the team at Fulton Hogan and Transit NZ for the daily road reports and updates and Becker's Transport for their ongoing sponsorship throughout this time, it was very much appreciated.

The 'Facebook' page is back in action, although a slightly different orientation at our end, hopefully the Burn updates and information is still proving valuable in the social media circles.

Sadly we bid farewell to Mackenzie Forbes-Williams from our team. It was a pleasure to have her on board and, over the years, it was a great to see Mackenzie grow in maturity, confidence and ability of which belied her young age. A very big thank you to Mackenzie for her dedication and work, an awesome effort, we will miss you, and wish you well. Charlotte Hutton Atkins will still be joining us weekly and if any other young ones aged 14 plus would like to give broadcasting a go give us a call here at the station.

Dates to pop in your diary – **'Father's Day' dedications – Sunday September 6<sup>th</sup>**. All it takes is a phone call, text or 'Facebook' entry to enter you dad in the dedications on the day, tune into Burn729am/87.9fm and enjoy the music. Dad goes in the draw for a great hamper of goodies. The ever popular **Labour Weekend Market Day – Saturday 24<sup>th</sup> October**, if you are keen to have a stall, contact us here at the station and book your site. Burn **'Community Cup' Challenge** – hosts Patearoa – **date in November to be advised**.

Your advertising, happenings, events and news is valuable to our community, keep us up to date and informed. Very competitive rates and terms available. Contact details for all your advertising requirements, updates and information here on Burn729am or 'Positively Maniototo'

Contact details for all your advertising requirements, updates and information here on Burn729am or 'Positively Maniototo.'

**Burn729am/87.9fm** 444 9729 / 027 287 6729  
email: burn729am@scorch.co.nz

**Positively Maniototo** 444 9993 / 027 264 3766  
email: amiepont@gmail.com

**Maniototo's own community run station.  
Your radio station! Keeping it live and local  
throughout the Maniototo  
Burn729am/87.9fm**



Maniototo Kindergarten is very excited to introduce our new Head Teacher. We welcomed Debbie McNally into our Kindergarten whanau and have asked her to tell us a little about herself

to share with the Maniototo community...

"As a parent, my children had the benefit of an early childhood education with kindergarten. When my youngest child started school, I made a career change and retrained with the Open Polytechnic of New Zealand, graduating with a Diploma in Teaching (Early Childhood). I have taught in community-based settings and, after almost six years teaching at Cromwell Kindergarten, I am thrilled to have the opportunity to lead the teaching team at Maniototo Kindergarten and thank the community for the warm welcome I received at the fish 'n' chip evening last week.

I believe kindergarten offers children the best opportunity to engage in early childhood education and value the partnerships and relationships that develop between kindergarten teaching teams and families. Kindergarten's point of difference is that 100% of our teachers are qualified and registered, ensuring that we offer a consistently high quality education for the children of the Maniototo.

I look forward to meeting you and your child and offer a warm welcome to anyone who would like to come and visit me and the teaching team at 28 Welles Street, Ranfurly."

**Maniototo Kindergarten is open:  
Monday – Friday, 9am – 3pm  
Call 444 9310**



**Maniototo Kindergarten offers...**

- **30 hours FREE for ALL CHILDREN** aged 2, 3 & 4 (Come in and talk to our friendly team about Terms and Conditions)
- A spacious purpose built inside and outside environment
- 100% Qualified and Registered Teachers
- Hours that reflect a school day model
- FREE, Quality Early Childhood Education right here in the Maniototo!

Ph: 4449310 Email: maniototokindergarten@coka.co.nz 28 Welles St

## MANIOTOTO PIG HUNT

Prizes galore, sausages sizzling, big bots, camo clad kids, happy hunters and a wallaby all sum up the Maniototo Pig Hunt for 2015. Tash and Reon Smith again organised a great competition and prize giving in the car park of Ranfurly Hotel with proceeds from the event going to local curling and hockey teams. Central Otago Hunting and Fishing's Larry Dougherty (as a new sponsor) was on hand to give out the prizes.

In the children's section the winner of the largest rabbit was Billy Dougherty, the largest hare and possum was Jack Helm and the largest pig was Tom Duffy.

Overall the largest pig went to brothers Caleb and Brendan Mathews and 2nd to the Sow Slayers (Tom Huddleston, Darrel Beatie, Laurance Austin and Tim Sloss). The main cash prize of \$1000 went to the Swine Sisters (Kelly Smith, Jenna Huddleston and Sonya Mathewson) for average weight of 49.75kg.



Organiser Tash Smith overlooks as Larry Dougherty awards Jenna Huddleston with the top prize of best average weight at the Maniototo Pig Hunt.



Perri Hore, Peta Smith and Maggie Dowling at the Maniototo Pig Hunt.



Thomas Helm, Billy Watson, David Hore, Billy Dougherty and Zac Howell hanging out with some of the 'bounty' at the Maniototo Pig Hunt in Ranfurly.

**VINCENT GEORGE**  
For personal and professional travel advice where and when you need it

PO Box 74, Naseby 9354  
Covering all aspects of your  
travel requirements

Contact Kay or Stephen Dunn  
ph: 4449 132  
[kayd@travelmanagers.co.nz](mailto:kayd@travelmanagers.co.nz)  
[stephend@travelmanagers.co.nz](mailto:stephend@travelmanagers.co.nz)



Approved Travel Broker of Travel Managers Group Ltd  
Registered Office: Level 7, 2 Emily Place, Auckland, NZ

# 4 FOUR SQUARE SUPERMARKET

## MANIOTOTO

Ph: 03 444 9021 • E: [maniototo@foursquare-si.co.nz](mailto:maniototo@foursquare-si.co.nz)  
1 Pery St, Ranfurly (opp. information centre)  
Proudly operated by Martin and Michelle Grundy

- Fresh meat, fruit and vegetables
- General stores • NZ Post Agent
- Extensive beer and wine selection




## VOTE FOR FARMERS VOICE

Monday evening the 24th of August, saw a gathering of about twenty local Maniototo Farmers for the official Beef + Lamb New Zealand (B+LNZ) referendum meeting at the Ranfurly Hotel.



Along with Anne Munro, B+LNZ Central South Island director, Bill Wright Central South Island Farmer Council chairman, and Cros Spooner, chief operating officer from Wellington, were local Farmer Council members Dawn Sangster and Preston Hope.

The meeting outlined the reason for the referendum vote, and what farmers can expect to see from B+LNZ looking forward.

B+LNZ was established to give New Zealand farmers a voice, as a farmer focused organisation delivering value where it is needed in the agricultural sector. It is governed by farmers and funded by farmers through sheep meat and beef levies.

The Farmer Council helps to determine where funding is spent and decides on topics for the extension programmes at a regional level, while working closely with the Board of Directors.

Bill Wright outlined current and future challenges for farmers in New Zealand, especially around nutrient management and water quality issues, as well as health and safety.

Beef + Lamb New Zealand's overarching strategy is to create a confident and profitable sheep and beef sector. To achieve this, its proposal for 2016-2022 looks at the continuity of current programmes, focusing on their content and delivery.

Examples include regional farm extension, the Red Meat Profit Partnership (where farmers are funding partners alongside six meat companies and two banks) and the Get Ahead careers days that focus on getting high school students interested and involved in the Ag sector.

A key focus is on helping farmers manage increasing environmental commitments and advocating for sensible and fair regulations. B+LNZ offers free land and environment planning workshops in this space, to help farmers understand and mitigate environmental issues on their own farms.

Health and safety is already and will continue to be an area where B+LNZ advocates for farmers on the development of regulations, "ensuring farmers can farm safely".

B+LNZ feels it is the "farmers' voice", through collaboration, so that everyone is on the same page. Voting in the 2015 Sheep meat and Beef Levy Referendum opened 8 August and closes 10 September.

Results will be made public later in September. A NO vote will see Beef + Lamb New Zealand wound down, and no longer exist.

So please don't forget to vote!

**Ro McDiarmid, Chairperson, Central Otago Farming for Profit (Regional Extension Group)**



**McLaren**  
AG & AUTO FARM MACHINERY

**5¢ off per litre**

**Get served your fuel and save 5 cents per litre on all cash sales!**

**Now available at McLaren's**

*To be eligible for the discount the purchase of fuel must be made in-store, during shop hours*

**RD petroleum**

[www.rdp.co.nz](http://www.rdp.co.nz)



## FOR AERIAL APPLICATIONS OF:

- Liquid fertilizers
- Lime
- Fine particulates
- Feeding
- Suspension fertilisers
- Spraying
- Solid fertilisers

**Give Marc a call on 027 522 1007**

## BUILDING BUSINESS

The latest business breakfast had another great attendance and included a catch up with Pam Broadhead (CODC Tourism Central Otago Marketing and Product Manager) and Paula Penno (CODC Community Development Manager). They summarised the results of the 2014/15 Rail Trail user survey which has was in July.

### Points included:

- The Otago Central Rail Trail continues to be the 'big name' in NZ trails however this does not mean we can 'drop the ball'.
- Brisbane is the largest growing market flying into Queenstown so working to get them into Central Otago
- The per person spend has increased, contributing over \$5million to the local economy per annum
- Tour operators consistently scored 9.5/10 for experience
- Users are younger

Janet from **More Than Books** was happy to see the positive outcome of the Rail Trail survey and reminded everyone they are providing the NZTA Service for the area. Keith and Sheryl from **Maniototo Paint and Hardware** will be building a new premises on Mitchell Street. Paul Stumbles from **McLarens** says the strong support from the community continues and, although competition is great, we need to work together and encourage and support each other. Paul from **Ranfurly Holiday Park** has noticed more Free Independent Travellers (FIT) and mostly Kiwis. Marilyn Swinbourn from the **Naseby Store** said the mail service keeps the store ticking over in quieter times but is looking forward to the busy season. Mark from **Waipiata Country Hotel, Tussock Lodge and the Rail Trail Marketing Group** headed to Wellington to promote the trail last month. Many he spoke to had ridden trails in the North Island and plan to come to the South to ride trails and enjoy the local wines. Tracey Weir from **Westpac** reported on a steady winter, an increase in young people enquiring about housing loans (changes in Kiwisaver are helping this) and customer numbers increasing in general. As long as the community keeps supporting it, the future of the branch will remain secure.

## JACQUI DEAN MP FOR WAITAKI



*Jacqui is in Ranfurly each month.*

Please contact her office if you would like to make an appointment. Jacqui has a member of her team available each week on Monday's 10am - 12pm at Alexandra Resource Centre.

### OAMARU OFFICE:

127 Thames St, Oamaru | Ph: 03 434 7325 | 0800 MP WAITAKI  
waitaki.mp@parliament.govt.nz | www.jacquidean.co.nz

Funded by the Parliamentary Service and authorised  
by Jacqui Dean MP, 127 Thames, Oamaru

**National**  
www.national.org.nz



In a follow-up from the last Business Breakfast update Southern Wide Real Estate has a new home in the main street of Ranfurly. The branch moved into the building vacated by Vetlife after their move to Northland Street. They now also have two agents. Sarah Smith (right) is joined by Tim Sharpin. Sarah says this gives greater flexibility and, with the Maniototo property market being so busy, 'it's great to share the load.' Enquiries and sales have increased. "There are lots of new people moving into town, including those wanting to retire. The majority of property purchases are definitely by out-of-towners," she says. Great news!



**The next Maniototo Business Breakfast is on  
Wednesday 16th September at 8am.**

**For further information call Amie on 027 264 3766**



Stuart Road,  
Ranfurly.  
Phone 444 9615

*Advertorial*

Spring has sprung, the flowers have ris', I wonder where the birdies is....

Soon the lambs will be hitting the ground, if they aren't already, so this is a crucial time in our farming calendar! We want to make sure all the lambs we identified at scanning make it through the birthing process and the neonatal period to grow into bouncing bundles of meat and wool!

There are a few hiccups we can encounter along the way:

- **Abortions**
- **Bearings**
- **Sleepy Sickness**
- **Milk Fever**
- **Goitre in lambs**

If you are experiencing any of the above then contact us ASAP as we have various tests and treatments that can help. We can also arm you with a personally tailored "Lambing Kit" with all the goodies you might need to survive the spring period.

Just a quick reminder about **Scabby Mouth** vaccine this season; Scabine will not be available, but we are offering Scabiguard in alternative. There are a few differences in application technique, but the product is essentially the same – although hopefully without the dramas of last year!

Dogs and cats around the town will be looking forward to the arrival of Spring, with the warmer weather and longer daylight hours. This may mean longer walks with our canine companions and more time out and about for the feline friends in the household! Time to start thinking about clipping the longer-coated members of the family before it gets too hot for them, give us a call at the clinic on 444-9615 to book this in! Speaking of clipping, our promo for the month of September is **FREE** nail clipping if you book in and mention the "September Promotion" – so book in today!

Jane Falconer presents her **CLACHANBURN COMMENT**

A lovely sunny warm day, and a walk around the grounds reveals growth everywhere, and the sound of birds, and a pair of paradise ducks on the pond makes me think that last Spring is on its way. The fruit trees have been pruned and I am about to spray them with copper oxychloride and conqueror oil. Instead of climbing a ladder with a back pack on and waving this around in mid-air! I am going to add on a telescopic spray wand with a dual nozzle, and keep my two feet firmly on the ground. With 20 odd fruit trees and climbing roses around the tennis court and quite a few growing over archways, I consider this a safe and sensible timesaving device. The purpose of these sprays is to help prevent fungal and bacterial diseases on fruit trees and roses, including leaf curl, downy mildew, and rust. I personally use very few sprays, but think a good clean up spray before the season begins does pay off, for plant health, and used in the orchard and on the grape vine in the glasshouse does help produce a good healthy crop of fruit. The snow drops are flowering, and other bulbs popping up, which will be lovely to see in a few short weeks. After many years of planting a few each autumn, there are now large drifts of spring bulbs, and to me that is when they give their best effect.

Shrubs which will be cut back now include –The Cistus family, commonly known as rock roses, and Spiraea Japonica ‘golden flame’, both pruned to maintain good shape and size you desire, and always pruning encourages good strong fresh growth. We are about to cut the old leaves off the Epimediums, being careful not to damage the new leaf growth, and to enjoy the delicate flowers, either pink or yellow. Also to cut back are the Artemisias ‘powis castle’ to encourage the new soft grey foliage.

While at a family wedding near Nelson I had a golden opportunity to visit the Tasman Bay Nursery, where the Lucy’s roses are coming from, and catch up with their development. Ben and Ruth Pratt (below) are both very excited about the Lions project and being part of it. They plan that the roses will arrive in the Maniototo mid-September, so remember to get your order in.

Happy Gardening  
Jane



**MANIOTOTO GARDEN CLUB MEETING**

**Thursday October 1<sup>st</sup> 7.30 pm**

The Arts Centre, Ranfurly

**Speaker:** George Lindsay will talk about his trip to The Falkland Islands, South Georgia and Antarctica.

**All welcome.**

**SEPTEMBER 1915 in MANIOTOTO**

The reality of war was beginning to hit the Maniototo with a further six men of the area recently listed as killed.

Fundraising for the Wounded Soldier Fund continued with each district appearing to compete against the other to raise the highest amount. The farmers also donated stock with fifty-one fat lambs from Waipiata sold at Burnside for £44.13s followed soon after by a truck load of sheep from Hyde selling for £56.15s. With so many able bodied men serving overseas the Canterbury Chamber of Commerce foresaw a serious shortage of labour for the harvest season and requested that moves be put in place to release school-children for farm work.

Wedderburn held a Gift Day plus a shooting contest between the men and the ladies. Obviously the ladies were well to the fore in results as the comment was ‘the ladies showed the country’s defence would be safer in their hands by defeating the men.’

Military Pensions were now available and could be applied for and collected from the Naseby Post Office.

Matt Beattie, wounded in the knee by a bullet, became the first returning Maniototo soldier and received a hero’s welcome. A formal welcome was held both in the Naseby Town Hall and a few days later in the Oddfellows Hall.

Just over £480 raised by the Maniototo was reported for September.



**PLANNING A HOLIDAY AND NEED EXPERT ADVICE?**

Travel Associates are Flight Centre Travel Group’s premium travel consultancy. Based in Dunedin, Hannagan & Greive Travel Associates can plan exclusive travel experiences for you, whether it’s an overseas trip-of-a-lifetime, weekend escape or flights to visit relatives.

Jodie will soon start visiting the Maniototo again on a regular basis. Listen out to Burn 729am / 87.9fm for dates and times or give her a call to pre-arrange an appointment .

If you would like to discuss your travel arrangements, please call Jodie on 021 024 290 26 to find out her next day of travel consultation and secure an appointment. Home visits welcomed by appointment only.

My next day of travel consultation will take place at the

PLAN YOUR NEXT BREAK AWAY WITH JODIE MCSKIMMING

**Mobile 021 024 290 26**

Jodie.mcskimming@travelassociates.co.nz

Hannagan & Greive

Travel Associates

102 Lower Stuart St, Dunedin

Freephone 0800 823 863

www.travel-associates.co.nz

Proud to be part of Flight Centre (NZ) Limited. TAD1129915



**POSITIVELY MANIOTOTO  
MONTHLY BUSINESS DIRECTORY**



**Focus on your future**

11 Charlemont Street, Ranfurly, Central Otago  
Tel: (03) 444 9158, enquiries@iclca.co.nz, www.iclca.co.nz



**ANDREW P. HAYES**

**BUSINESS AND TAXATION CONSULTANT,  
OAMARU**

Eden Street, Oamaru P.O. Box 168, Oamaru  
Telephone: (03) 434 8593 Mobile (027) 221 6343  
Fax: (03) 434 8586

Email: [andrew@andrewphayes.co.nz](mailto:andrew@andrewphayes.co.nz)  
at the Maniototo Service Centre Pery Street,  
2nd Thursday each month

**WAIPIATA COUNTRY HOTEL**

*Owners Mark & Nikki Button welcome you*

**FRIDAY NIGHT \$10 SPECIAL**

**250gm steak and chips or  
snapper and chips**

*(both served with salad)*

Call 444 9470

**Maniototo  
CONTRACTING**

Ian and Judy Hore 2004 LTD

**Hay • Baleage • Mowing  
Cultivation • Drilling • Subsoiling**



Phone:  
027 221 9803 • (03) 444 9405  
[ilhore@yahoo.co.nz](mailto:ilhore@yahoo.co.nz)

**More Than Books**

Richard and Janet and Staff from More Than Books wish to thank the locals for continued support over a long drawn out winter and know you will be all looking forward to spring as much as we are.

We have diaries and calendars for 2016 in stock **NOW** and happy to order in any stationery, books etc for your personal and business needs.



Agents for



**MCER**

**Mining &  
Construction  
Equipment  
Repairs Ltd**



Heavy equipment repairs & servicing  
Component overhauls  
Hydraulic Repairs  
Electrical repairs  
Mobile welding

**Phone:** Paul Bain 027 253 1137, 03 489 7317  
or [mcrepairs@xtra.co.nz](mailto:mcrepairs@xtra.co.nz)

**Workshop:** C/o Hyslop Rural, 28 Bell Street,  
Outram

**FOLEYS**



**Need a plumber?**

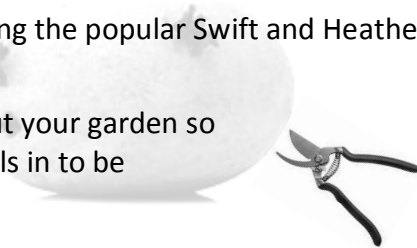
Call 0800 30 35 30  
[flan@foleyplumbers.co.nz](mailto:flan@foleyplumbers.co.nz)

**MANIOTOTO PAINT AND HARDWARE**

**50% OFF GIFT SALES TABLE**

Seed potatoes including the popular Swift and Heather only \$12.50 a bag.

It's time to think about your garden so bring your garden tools in to be sharpened.



Call 444 9008



## WHAT'S ON BURN AND WHEN

<b>Becker's Transport Road Reports, Cancellations &amp; Water Notices - Top of the hour</b>	<b>6am - 10am</b>
<b>Helina's Kitchen Birthday calls</b>	7.50am weekdays/ 9.20am weekends
<b>McLarens Machinery Buy, Sell and Swap</b>	9.30am , 11.30am and 3.30pm weekdays
<b>Vet Centre Community Notices</b>	10.30am, 2.30pm and 5.30pm weekdays
<b>Farming Show</b>	12noon - 1pm weekdays
<b>Monday Night Memories</b>	7pm - 9pm Mondays
<b>Groundworks Ltd Country Show</b>	6pm - 8pm Wednesdays & 9am - 12 noon Sundays
<b>Entire Plumbing Rock Show</b>	6pm - 8pm Thursdays
<b>Combined Churches Choices</b>	8am - 9am Sundays
<b>McLarens Sports Round Up</b>	9.30am Sundays
<b>The Hits Weekends</b>	6pm Friday nights and after midday Saturday and Sunday

For all notices placed in Buy, Sell & Swap, Live and Community Notices for individuals or groups, a gold coin donation would be very much appreciated (other than community groups who already make an annual donation). Thank you.

### MONDAYS

Ceramics Club:	10am at the Art Centre. Contact Eileen 444 9880, Julia 444 9971 or Lyn 444 9822
Ranfurly Karate Club:	6-8pm for beginners & lower grades, Maniototo Arts Centre. \$1pp – call 444 9831
Monday Night Memories:	Burn 729am 7-9pm, 444 9729

### TUESDAYS

Pottery Group:	Arts Centre, Reade Street, Ranfurly. Contact Denise 444 9985
Maniototo Ladies Golf:	Maniototo Golf Club 10.30am, tee off 11am. Contact Belinda 444 9185
Uruuruwhenua:	Smoking cessation 10.30am—2.30pm and from 6.30pm - Ranfurly Plunket Rooms.

### WEDNESDAYS

Catholic Women's League:	Op Shop. Open 10.30am - 4.30pm. Contact Francie on 444 9243
Artists Group:	1pm, Arts Centre, Reade Street, Ranfurly. Contact Norma 444 7076
Line Dancing:	4pm, Arts Centre. Contact Joan 444 9612
Ranfurly Karate:	Graded Members, Arts Centre 6-8pm. \$1pp. Call 444 9831
Pilates:	6-7pm, \$3 per session at Maniototo Community Library
Maniototo Bridge:	7pm Wallace Memorial Rooms. New members very welcome. Call Ang on 444 9231
Country Show:	Burn 729am 6-8pm. 444 9729

### THURSDAYS

Steady As You Go Classes:	10-10.30am at Ranfurly St John Ambulance Rooms. Call Joan 444 9164, Karen 444 9814 or Maureen 444 9493
Rock Show:	Burn 729am. 6pm - 8pm. 444 9729

### FRIDAYS

Catholic Women's League:	Op Shop. Open 10.30am– 4.30pm. All welcome. Contact Francie on 444 9243
Indoor Bowls:	1.30pm at Ranfurly Bowling Club. All welcome.

### SATURDAYS

Maniototo Golf:	Tee off 12.45pm. Contact Wayne for details on 444 9491
-----------------	--

### SUNDAYS

Presbyterian Church:	10am Family Church Service at Ranfurly
Naseby Golf:	Club Competition. Tee off 11.30am. Contact Carol 444 9949 or Syd 444 9604 Waipiata Country Hotel. 2-4pm



<b>Maniototo Toy Library</b>	2nd Monday	11.30am – 12.30pm	Renee 444 8212 or Michelle 444 9034
<b>Maniototo Spinners</b>	2nd and 4th Monday	10am – 3pm	Tracey 027 654 1977 or Karen 444 9814
<b>Plunket Playgroup</b>	1st Monday	10am-12noon	Heather 444 8353
<b>Business Breakfast</b>	3rd Wednesday	8am - 9am	Amie 444 9993
<b>Garden Club</b>	1st Thursday	7.30pm	Sheryl 444 9776
<b>St Hilda's Anglican Church</b>	1st Sunday	10.30am	St Hilda's Church, Ranfurly

Please note some dates may alter over the school holidays