



# positively MANIOTOTO!



Phone Amie on  
(027) 264 3766 or email  
info@maniototo.co.nz

Download on line from [www.maniototo.co.nz/contacts-links](http://www.maniototo.co.nz/contacts-links)

**OCTOBER 2014**

## A GREAT SHOW FOR A GREAT CAUSE

So many people have a story to share about how they have been affected directly or indirectly by the outstanding work provided by the Otago Rescue Helicopter Trust.



The Maniototo area requires the services of the emergency helicopter on average of once a week. Our relatively isolated community is heavily dependent on being taken quickly and safely to hospital in Dunstan or Dunedin. The service has saved many lives.

Managing Director of Helicopters Otago Ltd and Chief Pilot Graeme Gale established the Rescue Helicopter Service in 1994. Graeme is fully supportive of the Maniototo's Got Talent event and will have some of his crew in attendance. He says, "The trust is extremely grateful for the generous donations and support from across the region. Thank you to the Maniototo community for their passion and commitment to assist in supporting this service."

The fundraiser is based on a successful format run in Lawrence earlier in the year where tables were sold for \$1000 each. In addition to 5 local performances, auctions were held and there was a band to dance to. However, due to overwhelming demand we will be holding a dress rehearsal matinee in the afternoon in addition to the main event in the evening. This is the chance for individuals and families to come along by donation entry.

The evening show has been hugely popular and includes live band The Crescents and MC Jamie McKay from The Farming Show. Rolling supper, raffles, auctions and refreshments are all included in the table price. There are some fantastic auction prizes to bid on including flying time with Helicopters Otago and a truck and trailer load of spread lime from McLarens/RDP/Taylors Lime. More fantastic items are rolling in as the word gets out too so a huge thank you to everyone already contributing!



The generous support of this event from businesses and individuals has been overwhelming. The Ranfurly Volunteer Fire brigade will staff the bar, the Maniototo Lions will help with set up, Renee Weir has kindly designed the posters, community groups and members of the community are helping with catering and the Maniototo Community board has donated the venue hire. Becky McAuley from The Hair Studio will be generously provide hair and make up.

Auditions for 'Maniototo's Got Talent' were held in August with a great selection of local acts bravely putting themselves out there. Three 'panel' members from Clyde and Alexandra gave their time freely, travelling over just to provide independent feedback on the performances. Some think one of the panel members took on a bit of a Simon Cowell role! All the performers are to be commended and the top 5 have gone through to the main performances.

While the tables have been set around the number of 10, due to popular demand a limited number of smaller tables have been made available in the western gallery. Please call Barry on 444 9140.

## DRESS REHEARSAL / MATINEE

Saturday November 8th  
Maniototo Stadium at 1.30pm  
Donation admission



**MANIOTOTO COMMUNITY  
BOARD**

**HUNTER STEVENSON - ALL INSURANCE WITH ASSURANCE - 027 438 1288 (SEE FULL AD PAGE 3)**

## FORWARD PLANNING 2014

|                    |   |
|--------------------|---|
| <b>OCT</b> Fri 3rd | Otago Rescue Helicopter Trust raffle night at Ranfurly Hotel from 5.30pm                              |
| Tues 7th           | Ranfurly Indoor Bowling Club AGM  |
| Tues 14th          | CO REAP Meeting Procedure Workshop (page 9)   |
| Wed 15th           | Maniototo Business Breakfast, 8am at Ranfurly Hotel and Heartlands Ranfurly visit (page 4)            |
| Thurs 16th         | 'Our Brave in front of us, Our Maniototo men' WW1 exhibition opening (page 6)                         |
| Sun 19th           | FREE Sunday School breakfasts start (page 10)   |
| Fri 24th           | Southern Man Dennis Henderson Ranfurly Hotel  |
| Sat 25th           | Burn 729am Maniototo Markets, Centennial Gallery opens for the season and McLarens Transport reunion. |
| Fri 31st           | Otago Rescue Helicopter Trust raffle night at Ranfurly Hotel from 5.30pm                              |
| <b>NOV</b> Sat 8th | Maniototo's Got Talent (page 13)  |
| Thurs 13th         | 'Wot to Wear & Wot Not to Wear' comedy show   |
| Sun 23rd           | Maniototo Community Cup in Otarehua   |
| <b>DEC</b> TBA     | Santa's Grotto in Ranfurly  |
| Fri 5th            | Kyeburn Christmas Potluck   |
| Sun 7th            | Meet Maniototo at Patearoa  |
| Sun 21st           | Gimmerburn Christmas Get Together   |
| Mon 29th           | Naseby Book Sale at Naseby Town hall  |
| <b>JAN</b> Sat 3rd | Crockery Bob's Annual Bring & Buy Sale (below)  |

### NASEBY BOOK SALE

Proceeds to Naseby Information Centre. 10am on Monday 29th December at Naseby Town Hall. Book donations can be left at the Maniototo Community Library or Naseby Information Centre.



New Zealand Couriers are happy to support your community publication 'Positively Maniototo'.

**Call 0800 800 841 for your courier needs**

### CROCKERY BOB'S SALE

The annual 'Bring & Buy' sale will be held in Patearoa public hall on Saturday 3rd January 2015 at 10.30am. They will sell **anything**. Your rubbish may become someone else's treasure.

Enquiries to Bob Paterson on 444 7854

### THIS EDITION ...

- Maniototo's Got Talent
- OOSH comedy show coming to Ranfurly
- From The Lip with Jamie McKay
- Super Stallion

## THANK YOU

To all the people of the Maniototo, a huge THANK YOU. To the volunteers, the business people and to you, the people in our community, to each and every one of you who helped in so many ways to make our Daffodil day such a huge success. We just couldn't do it without the very generous help that you all gave in so many ways.



### SPECIAL THANKS TO:

Our local Burn Radio and Positively Maniototo (Denise, Amie and the wonderful volunteers), More than Books (Janet and Dick Parker), our cashier Irene O'Malley, Westpac Bank and their fantastic staff, Maniototo Four Square (Martin, Michelle and staff), Ranfurly Four Square (Linda and staff), The Catholic Women's League and McLarens Transport (Gwen).

Thank you to everyone who displayed collection buckets, to all the volunteers who helped pre-sell and deliver our daffodils, everyone who donated raffles, grocery items for our hamper and to the wonderful bakers, such a delicious lot of baking! To all our volunteers who did so much to help make this day so successful and to everyone who gave such very generous donations please accept our very humble thanks.

The total amount raised was \$64443.70

*(Ed: This is an almost unbelievable amount for a community our size - well done us!)*

**Raffle Results:** Meat voucher (Tony Kreft), jug (Barney), patchwork runner (Glenys Walker), rose (Ray Hunter), teddys (Dolina Keenan), socks (Leanne Spraul), toddlers jacket (Val Weir), jacket and hat (Margaret Steel), grocery hampers (Anne Buchanan and Linda Whitcomb).

### INDOOR BOWLING CLUB AGM

The Annual General Meeting of the Ranfurly Indoor Bowling Club will be held on Tuesday 7th October at 10.30am (at the Bowling Club).

See full results and raffle winners for 2014 on page 11.



### POSITIONS AVAILABLE

Have you thought about it but never taken the leap? Are you community minded, can spare a few hours a week, enjoy music and would like to join the Burn radio team? We have flexible announcing shifts available.

A small remuneration is offered and full training provided. It's a great opportunity to keep your community connected.

Please ring Denise for a chat on 444 9729.

### POTTED PEONIES

Export grade peonies for sale. Choose from Red Charm, Bowl of Cream, Petticoat Flounce, Elsa Sass, Charlie's White and Glad Tidings for \$25 each. Karl Rosenfield peonies are \$15 each. Call Syd or Betty on 444 9604.

## WHERE ARE THEY NOW?

This month Positively Maniototo caught up with Bridget Becker (pictured with her two children Kaylah and Axel during a visit to Patearoa last winter).

### What is your link to the Maniototo?

I was born in Ranfurly and grew up on the Becker family farm in Patearoa.

### What did you do when you were here?

Anything and everything I possibly could from the age of 0 - 18

### Where are you now?

I live in Melbourne, Australia

### What do you do there and what is a highlight of what you do now?

I am a mum of two amazing children and work part time as a quality officer at a Registered Training Organisation. My highlight is my family.

### What do you miss the most about the Maniototo?

I miss my family and the wide open spaces and it's stunning starry night skies!



## COOL TO KORERO

Mike King and his colleague Tai Tupou from The Key To Life Charitable Trust visited the Maniototo Area School last month to tell their stories on struggling with family life and trying to fit in at school. They covered what it's like to be the bully and be the bullied while keeping it all very relaxed and relatable. The aim of the organisation is to be a community peer support group, aiming to forever change the way New Zealanders think, act and feel about mental health and suicide. By working seamlessly with mental health professionals, service providers, business leaders, and our communities they believe it is possible to reverse the population trends of depression and suicide by effecting a positive social change.

Mike King asked Year 13 student, Colleen Hollows, to be one of the administrators on the Key to Life Charitable Trust Facebook page. The Trust likes to have representatives all across New Zealand.

Social Worker in School, Stewart Hawkins (pictured with Mike) said Mike and Tai were "awesome and brought a real positive energy with them that everyone would connect with."



### Check out

[www.keytolife.org.nz](http://www.keytolife.org.nz) or like them on Facebook.

## BUSINESS BREAKFAST BENEFITS

The latest business breakfast (held the 3rd Wednesday of each month, 8am at the Ranfurly Hotel dining room) was again well attended. Speaker Jamie Roy inspired many Maniototo businesses to increase their online presence and 'claim' their google + pages. Greg Wilkinson (founder of the Cromwell Breakfast Club) commended the Maniototo on a successful start to their group and reiterated the value in meeting together around the table to build business to business relationships. Central Otago District Council staff from the Economic Development and Online/Digital divisions also told us about his role in Council.

## MANIOTOTO AGRICULTURE FIELD DAY

DUNCAN AG and McLaren Machinery  
are holding a field day on the  
22nd of October 2014  
**ALL WELCOME**

**WHERE:** John Girvan's Property  
Brinsdon Road  
RD Ranfurly  
**STARTS:** 11am

DUNCAN AG will have their new T.F.D drill and the MK4 renovator drills working on the day.

Jack Elder from AGRICENTRE SOUTH will be supplying CASE tractors for demonstration to help us with this field day.

Light refreshments available

**For further details ring:**  
Mike Summers or Paul Stumbles  
McLaren Machinery, Ranfurly  
444 9160



OFS Insurance Brokers  
Locally owned



**Hunter Stevenson**  
Insurance Broker

### Farm Insurance Business Insurance Personal Insurance Financial Advice

*Time to get serious about insurance with the recent changes.*

*Would you like advice from a 'local' and not a website or 0800 number?*

*Give me a call to arrange a no obligation discussion about your situation. I will visit you.*

**(03) 471 6800  
(027) 438 1288 or  
hstevenson@ofs.net.nz**



## MANIOTOTO NETBALL TAKES IT OUT!

Last edition of Positively Maniototo covered The Maniototo Ladies Netball team's successful season so far and we are so pleased to announce it didn't end there! As we went to print last month the ladies were about to play their final game and they won it!

Not only did they gain the trophy for winning the first round of the Premier 2 division, they were then awarded the second trophy as the overall Premier 2 champs. They played Alexandra Green in the finals and won 20-35 arriving to the game in style in a white stretched limousine (as you do!).

There was plenty of well deserved celebrating and the team look forward next season.



Back row L-R Jackie Spooner, Nika Ramiki, Amanda Dougherty, Renee Weir and Rachael Holmes. Front: L-R Lisa Bankshaw, Sarah Byrne and Kimmie Parker.

## COMMUNITY CONTENT

Send your contributions for Positively Maniototo to Amie by calling 444 9993 or email [info@maniototo.co.nz](mailto:info@maniototo.co.nz).



## Enjoy your new kitchen

Designing a new kitchen is one of the most exciting projects you'll undertake when renovating or building your home.

With over 30 year's experience, we've got the tools, advice and inspiration to help you create a kitchen perfect for your lifestyle.



Susan Preston  
Design Consultant

Give Susan a call on 03 455 5101 or email [susanp@kitchenstudio.co.nz](mailto:susanp@kitchenstudio.co.nz)  
275 Hillside Road, Dunedin  
[www.kitchenstudio.co.nz](http://www.kitchenstudio.co.nz)

**Kitchen Studio**  
Kitchens to suit your lifestyle



Inland Revenue  
Te Tari Taake



Heartland Services  
Ngā Ratonga ki te Manawa o te Whenua

## Inland Revenue

Will be in Ranfurly as part of the Heartlands initiative on

Wednesday 15<sup>th</sup> of October 2014  
from 1.45pm to 3.30pm  
at Central Otago District Council,  
15 Pery Street, Ranfurly

For help with:

Income Tax

Working for Families Tax Credits

Child Support

Student Loans

Please Call Maureen Miller

([sf.maniototo@coreap.org.nz](mailto:sf.maniototo@coreap.org.nz))

on 03 444 9493 or 027 341 5558

to arrange an appointment

(You can also visit our website [www.ird.govt.nz](http://www.ird.govt.nz))

## CALL FOR TROPHIES AND TRAYS

In order to have all the Horticultural and Industrial A&P Show trophies and trays engraved before the 2015 show can anyone who received one please return them to Amie at The Practice, Ranfurly (9 Northland Street) before the end of October. This will allow time before Christmas to have them sorted - thank you very much.



**Domestic & Commercial Contracting**  
**Home Appliances**  
**Fujitsu Heat Pumps**  
**Irrigation & Stock Water Pumps**

**Call into our showroom and check out our range of top brands**

29 Charlemont St, Ranfurly Ph/fax 03 4449-314

Mob: Doug 0274388380 or Rob 0274478627

Email: [grahamelectrical@xtra.co.nz](mailto:grahamelectrical@xtra.co.nz)



## FROM THE LIP

In a recent promotion a group of Maniototo men took the trip of a life time to Wellington with The Farming Show - Jamie McKay shares the weekend with us.

Jamie McKay



**Friday 11am:** As the old saying goes, you can't beat Wellington on a good day. The Farming Show team arrives in town on a magnificent day for a weekend at the footy but first there's some work to be done.

**11-45am:** Lunch with Vodafone and discussions about how to leverage the rural broadband roll out. There's some fascinating technology advances on the near horizon.

**2pm:** It's off to NIWA and a look at the \$10 million super computer that's capable of trillions of calculations per second. Very excited about NIWA's new FarmMet forecasting service for farmers!

**5pm:** Talking of farmers, we meet two of them in a bar! Maniototo sheep and beef farmer Dave Jopp and Matamata cow cocky Eddie Robinson have each brought three mates on a road trip to Wellington for the Springbok's test as part of their prize for winning the VW Amarok Challenge on the Farming Show.

**6-9pm:** Celebrity drop-in appearances from Grant Nisbett, Ian Smith, Justin Marshall, Barry Soper, Heather du Plessis-Allan, Rachel Morton, Martin Devlin and Miles Davis only add to the bonhomie. Then it's off to town with the farmers and their mates.

**12-00am:** Time for me to pull stumps for the night after a long evening session. Tomorrow's a test day! Some of the Maniototo boys sample a few whiskies in their room till 3-30am! Honours on day one go to the 50-somethings from the south. The younger 20-something's from Matamata were tucked up in bed hours earlier!

**Saturday 10am:** After a hearty breakfast, it's off to the local VW dealership in town to video the farmer feedback on the new Amarok utes that Dave and Eddie have been driving around their respective farms for the past month. The younger Eddie loved his Amarok so much he bought one there and then. The canny Dave wants one too. But not before he does some serious twisting of some VW arms.

**4-30pm:** Courtesy of a charity auction prize purchased, we're off to the NZRU headquarters for corporate hosting including pre-match drinks and canapés. It's an opportunity to get your photo taken with the World Cup, the Bledisloe Cup and to meet such luminaries as well known dairy farmer Graham Mourie and NZRU president Ian McRae – an absolute boyhood hero of mine from the 1967 All Blacks.

**5pm:** Having already teed up Nisbett and Marshall to talk to the Farming Show touring group in Johannesburg ahead of the next Springbok test, I swap mobile numbers with Steve Tew and ask if he will join us too. I'm not filled with confidence when he says, "Who are you again?"

**6-30pm:** The hosting continues at the Cake Tin with former All Black Buck Anderson taking us on a guided tour of the All Blacks dressing room, a walk around the pitch and a look at the Sky broadcast facilities.

**7-35pm:** Game time and it is nose-in-the-trough time in the NZRU corporate box where politicians proliferate and pontificate. There's Bill English, Tim Groser, Grant Robertson and Peter Dunne to name but a few. Dunne's hair is just as ridiculous in real life as it is on the telly. Former All Black greats abound in the box! How do we get in here next year?

**10pm:** It's the auction prize that just keeps on giving! We're off the official after-match function at Te Papa.

**12-30am:** We're the last to leave the after-match but not before we get to meet a couple of successful breeders – namely Don McCaw and Stu Smith – the fathers of Richie and Ben respectively. Don drags Richie over for a beer. For a man in incredible demand he is incredibly polite and engaging. One of our tour group offers, in jest I hope, his wife to Richie on a sacrificial altar. Another implores him to publicly endorse John Key a week out from the election, just as Dan Carter has, or better still, run himself! Richie politely laughs off all three offers but indulges us.

**3am:** A glorious day and a bit comes to an end with a couple of 'roadies' at our hotel. The Matamata boys have hit the hay and day two honours, once again, go to the old stagers from the Maniototo who show little inclination to head for their beds. I leave them leaning on their leaner as they ponder a drive in their VW Amarok ute the next morning to Napier to watch their beloved Otago rugby team challenge for the Ranfurly Shield.

They breed 'em tough in the Maniototo!

## Ranfurly

# Hey Kids!!!

Write a story or a poem about your favourite pet and send it to our Veterinary Centre

### FIRST PRIZE

A scenic flight over North Otago  
- and you get to take a friend or family member with you!



PLUS

A \$250 cheque for your school

Plus loads of runner up prizes up for grabs!

Don't forget your name, age and school  
Drop your completed entry into your Blue Cross Veterinary Centre before Friday 31st October.

By the Big Blue Cross



# Veterinary Centre

Phone 03 444 1020

With Spring having arrived and lambing in full swing there are lots of the little bundles of joy skipping around the paddocks in the Maniototo. If you are lucky enough to be rearing lambs, as pets or otherwise, here are a few reminders to keep you going.

## Navel Infections:

The navel (belly button) of a newborn lamb provides a direct route for infection to get into the body. Navel cords and the entire cord area should be disinfected with iodine soon after birth. If the cord area is already dirty it is likely bacteria have already entered and a penicillin injection would be worthwhile.

## Colostrum:

It is really important that newborn lambs get a good feed of colostrum. This is the first milk produced by the ewe and contains antibodies crucial to building a lamb's immune system. It is recommended that lambs receive 10 percent of the body weight in colostrum by 24 hours after birth. **This means that a 4.5kg lamb should consume 450mls of colostrum by 24 hours of age.** If you have a newborn lamb that you suspect has not received colostrum, and don't have access to any colostrum, we have a powdered variety available.

## Bloat:

Abomasal bloat can occur when lambs are fed milk replacer or cow's milk, with bacteria in the warm, milky environment producing excess gas. This results in the abomasum (one of the lamb's stomachs) inflating like a balloon. This is a life-threatening condition and if your lamb develops a swollen stomach and is not happy you need to get it to the clinic as soon as possible.

Bloat can be prevented by making your milk into yoghurt before you feed your lambs. We have a really easy and practical recipe for doing this so call in to the VetEnt Ranfurly clinic to get your copy.

If your lamb is due for a feed and it's not hungry, it is always a good idea to ask somebody to check it over - call the Ranfurly VetEnt clinic. Not wanting to drink is the first signs of sickness.

## TRANSPORT REUNION

McLarens Transport are holding a reunion this Labour Weekend leading up to celebrating 55 years of operation next year. Past employees Robin Reid of Wanaka and Rock McRorie of Ranfurly came up with the idea and they are pleasantly surprised with the response. Between thirty and forty current and past drivers and partners will enjoy a dinner and reunion on the Saturday night at Maniototo Stadium.

If there's anyone out there who, for some reason, haven't been contacted and you have worked for McLaren's Transport as drivers or depot staff members please contact Rock on 444 9503.



**MANIOTOTO WORLD WAR 1  
EXHIBITION**  
"Our Brave in Front of Us"  
Opening to the public  
Friday 17<sup>th</sup> October - 6th December  
10am to 2pm daily  
The board room at  
Ranfurly Service Centre, Pery St.

Contact Raewyn Inder on  
444 9748 for more information

**McLaren**  
AG & AUTO FARM MACHINERY



- ⇒ 24 Hour Fuel  
Accept **EFT POS**, BP, Credit Cards including RD1  
High flow diesel pump  
Castrol Oil Distributor  
Check out our awesome in-store deals now!
- ⇒ Ag & Auto workshops  
(6) Qualified Technicians (1) Apprentice  
Specialising in car, ute, motorbike, ATV, tractor, digger, farm equipment and light truck repairs.  
MTA approved member.
- ⇒ Duncan Agmech winter feed equipment  
CaseIH Parts & Service Agent  
Husqvarna Forest & Garden  
Robertson Pearson -Rata -King Hitter  
Post Drivers
- ⇒ **AVAILABLE FOR HIRE - CaseIH**  
MX100c & Loader/ Silage Grab/Soft Hands  
Puma 155MC & Loader /Silage Grab/Soft Hands

**For all your Ag & Auto repairs talk to Mike today**  
**Open 7-30am Mon-Friday 8-00 -12am Saturday**  
**4449160 or 4449747**  
**office@mclarens.net.nz**



## 2014 COMMUNITY CUP

This year Otarehwa will host the Maniototo Community Cup on Sunday 23rd November @ 2pm after a successful event at Gimberburn last year (pictured is Charlie Hore participating as part of the Patearoa/Styx team)



It's time to get your teams together ! You will require a teams of eight to compete in a variety of activities and vie for the cup. Teams are needed from Ranfurly, Naseby, Gimberburn, Waipiata/Kokonga, Wedderburn, Otarehwa, Kye-burn/Danseys Pass and Patearoa/Styx. Get a team leader together, gather the troops and have a great day out at Otarehwa.

Team requirements - 8 Team members with 4 men, 4 women, one member to be 60 plus in age and one 16 years or under. This year all team members are to have a life jacket and, for safety reasons, it must be the correct size/ fit for each member. To register your team or any questions phone Ro McDiarmid. 444 5865.



### Focus on your future

11 Charlemont Street, Ranfurly, Central Otago

Tel: (03) 444 9158, enquiries@iclca.co.nz, www.iclca.co.nz

## GEORGE'S ROCKING HORSE

This rocking horse belonged to George Wyan Fisher, loved son of the late Wilfred and Mary Fisher of "Tahumatu", White Sow Valley, Wedderburn, where they lived from 1923 to 1951.

George was born on 1<sup>st</sup> October 1929 and was a happy baby. Tragically in 1931 he became unwell, was admitted to the Maniototo Hospital in Ranfurly and, on the 11<sup>th</sup> of April 1931, he passed away.

In memory of George, his elder brothers Blanchard, Cecil and Arthur presented George's rocking horse to the Children's Ward at the Ranfurly Hospital where it had full and happy use for many years. The story of George and his rocking horse is fondly recalled by his surviving brothers Roy and Gordon, who now live in Papamoa and Mt. Maunganui respectively.

The rocking horse is in storage at the hospital and can be viewed on request.



## INTERLINK *farm and steel*

Interlink Limited was founded in 2009 and is a supplier of farm fencing materials including gates, wire, y-posts and netting.

We are now servicing your area with competitively priced products that meet NZ's strict quality control standards.

Contact us today for a catalogue  
& free quote.

Matthew Kennedy

P: 0508 468 375 E: info@interlinkltd.com



## No Travel Charges

Get the outside of an average  
sized 3 bedroom house  
sprayed for **Spiders** for only  
**\$130** (incl.gst)

OR

**Inside & Outside** of house  
sprayed for **Spiders & Flies**  
for only **\$230** (incl gst)

**1 year service warranty!**

Call us on: (03) 4485905  
or 0800 22 55 52

## BURN729AM UPDATE

Denise Baddock

Nice to welcome spring to the Maniototo. Congratulations to Jim McDiarmid for winning the Burn 729am 'Father's Day' draw on Sunday September 11<sup>th</sup>. Thank you to the sponsors who donated to the wonderful hamper, Challenge Ranfurly, The Practice, Ranfurly, Ranfurly Hotel, Foley & Jones, PGG, Ewes & Moos, Graham Electrical Ltd, Farm-lands Ranfurly and Burn729am. A sterling effort by Carol who played 72 dedications to all the special Dads and granddads throughout the area.

In response to my request for an announcer or two, Lynley Smith has taken up the challenge to join our team and enjoyed her first session observing, with training pending, welcome aboard Lynley. Our breakfast announcer Mark Button will be leaving us for the next six months as the Rail Trail starts in earnest. Thank you Mark. We will look forward to your return in 2015.

Burn729am would like to thank 'Beckers Transport' in association with Fulton Hogan for their ongoing valued sponsorship of the road reports throughout the winter months, it was very much appreciated by all our listeners.

Aside from the Maniototo Markets (right), the Burn 729am Maniototo Community Cup (page 7) and the OOSH Comedy fundraiser (page 9) don't forget that Burn is also bringing

Santa to town in December.

**Santa's Grotto** will again be in the St John Ambulance Rooms, Northland Street, Ranfurly. So plan ahead and save yourself a trip to Dunedin and the hassle involved, visit our grotto and get your photo taken with Santa.



BURN 729am  
Maniototo Markets

# MARKET

LABOUR WEEKEND  
SATURDAY

25<sup>TH</sup> OCTOBER

**RANFURLY RAILWAY STATION  
VILLAGE GREEN**

10AM - 1PM

RANFURLY RAILWAY STATION VILLAGE GREEN\* FINE DAY VENUE  
RANFURLY TOWN HALL\* WET DAY VENUE

FOR ALL ENQUIRES PLEASE CONTACT RENEE WEIR ON 0276993422 OR 03 4448212

## NZ Grasslands Annual Conference

### Wednesday 5<sup>th</sup> to Friday 7<sup>th</sup> November 2014

### To be held in Alexandra, involving 2 field trips

#### Field Days:

##### **Wednesday 5<sup>th</sup> November**

Greenfield, Oturehua

Ida Valley Station, Poolburn

##### **Thursday 6<sup>th</sup> November**

Nine Mile Station – Willowbank, Tarras

#### Topics include:

Dry land Pasture development

Cost of development

Sustainable high country management

#### Topics Will Include:

Merino finishing/dairy grazing

Nutrient management

Intensive irrigation option

#### **How Can I Attend?**

Phone Marie Casey – 027 595 5352

or Julie Kearney 03 465 0063

Contact [www.grasslands.org.nz/events](http://www.grasslands.org.nz/events)

#### **Pre-registrations required**

No registrations on the day





## OOSH COMEDY

Your community radio station is stoked to be able to welcome Suzie and Kiwi Johnson from the North Island as a fundraiser for a new community website [www.maniototo2day.co.nz](http://www.maniototo2day.co.nz)!

This dynamic couple are behind the NZ brand 'OOSH'. Suzie, is a trained nurse, entrepreneur, author, clothing and jewellery designer, retailer, artist, property developer, motivational speaker and mother of five very busy kids. After purchasing a derelict store in Shannon they had \$5 in their bank account so HAD TO MAKE IT WORK!

Suzie and Kiwi now own ten stores in Shannon, Woodville, Taihape and Napier as well as a clothing factory and a pub! The plan is to 'Oosh' 20 towns in ten years; increase its web presence and social media activity.

During 2010, Suzie wrote a stand-up comedy show. A raw politically incorrect, motivational comedy show. This has developed into a successful fundraising event. Its mission is to empower women; develop the tools to understand body shape, then how to dress it.

**Wot to Wear & Not to Wear**  
**Thursday 13th of November, 7.30pm**  
**Ranfurly Town Hall**

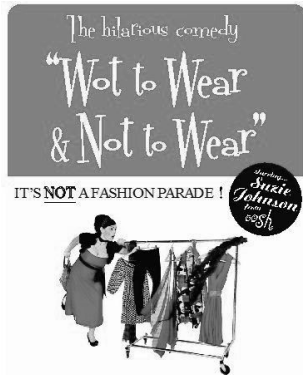
**Tickets \$25 per person and will be available in October from Burn 729am and The Practice, Ranfurly.**

Event kindly supported by:

**radionetwork**



**Maniototo Community Board**



## MEETING PROCEDURES

### Keeping It Simple

Central Otago Rural Education Programmes are pleased to be bringing this helpful workshop to Ranfurly.

**Date:** Tuesday 14 October 2014

**Time:** 7.30 - 9.00pm

**Venue:** Maniototo Area School

**Tutor:** Gloria McHutchon

**Cost:** \$10

This one and a half hour workshop will give you the information to enable you to take on a role in your group and know what the correct procedures are. This knowledge will assist a group to function correctly.

### Learning Outcomes:

- Learn what must happen, what could happen and what might happen at any meeting
- Learn the duties of office bearers
- Learn the best order of proceedings at a meeting

### About the Tutor:

Gloria learnt about running meetings through Country Girls Club in the 60's. As we do in rural areas she went through the whole gambit - Plunket Mothers, PTA, Cubs, Brownies, Sport and Church groups and Rural Women at Level 4.

If you would like to make a booking for this workshop, please phone 0800 267-327 or (03)448-6115.

# Russells

## CURTAINS & BLINDS MOBILE

*Beautiful Custom made Drapes  
Blinds, Shutters and Awnings.  
FREE in home consultation.*

**Call Sharyn today  
on 027 776 6533  
for a FREE no-obligation quote  
Russells: 0800 808 300**



Visit [www.russellscurtains.co.nz](http://www.russellscurtains.co.nz)  
to see our current flyer advertising and TV advert



## Jacqui Dean

**MP FOR WAITAKI**

*Jacqui is in Ranfurly  
each month.*

Please contact her office if you would like to make an appointment.

Jacqui also has Leigh-Ann Moir, a member of her team available each week on Monday's 10am - 12pm at Central Stories Museum.

**OAMARU OFFICE:** 127 Thames St, Oamaru 9400

Ph: 03 434 7325 | 0800 MP WAITAKI

[waitaki.mp@parliament.govt.nz](mailto:waitaki.mp@parliament.govt.nz) | [www.jacquidean.co.nz](http://www.jacquidean.co.nz)

Funded by the Parliamentary Service  
and authorised by Jacqui Dean MP,  
127 Thames, Oamaru

**National**  
[www.national.org.nz](http://www.national.org.nz)



## OUT & ABOUT



ABOVE: The Maniototo Rugby Club held their end of year function at the Ancient Briton in Naseby. After another successful season winning the White Horse Cup and coming out on top as the Central Otago Premier Champions, there was plenty to celebrate. Pictured above are Warren Dobson (awarded the Derek Stumbles Memorial for contribution to the club), Maniototo Player of the Year Charles Crutchley and Most Improved Player was Jake Scully.



LEFT: Mark Button from Waipiaata and Robert Sapsford from the United Kingdom after voting on the 22nd of October. Robert has dual citizenship by decent and has been living in Canterbury for the last year. He was one of many who took the opportunity to take a special vote whilst visiting the Maniototo.



## BREAKFAST BONUS

Next term the Maniototo Presbyterian Church Sunday School will be providing free breakfast on Sunday mornings for children aged between 5-12 years.

These will be held in the Sunday School room behind the church at 9.15am every Sunday starting on the 19th of October.

Breakfast will be followed by a bible story, games and craft activities.

There is no charge and everyone is welcome.

Please contact Rowena Kinney on 444 4700 for more information.



## MANIOTOTO

### 4 FOUR SQUARE

Proudly operated by Martin and Michelle Grundy



- >> Fresh meat, fruit and vegetables
- >> General stores
- >> Extensive beer and wine selection

CRT • LTSA • NZ Post Agent

Ph. 444 9021 e. [maniototo@foursquare-si.co.nz](mailto:maniototo@foursquare-si.co.nz)  
1 Pery St, Ranfurly (opp. information centre)

## COMMUNITY PRESCHOOL SPRING FUN DAY!

The Team from Playball Coaches  
will entertain your Children!

Activities with Balls, Hoops,  
Parachutes & Sack Races!

### INFO

Venue: Maniototo Kindergarten, Welles St, Ranfurly

When: Saturday 18<sup>th</sup> October 2014

Time: 1-3pm

Who: All preschoolers & their Families





## LABOUR WEEKEND



### MORE THAN BOOKS

**Saturday 25<sup>th</sup> - Monday 27<sup>th</sup> October 2014**  
**19 Charlemont Street Ranfurly**

- Books galore!
- Craftwork supplies
- A huge assortment of pre-cut fabric (3rds of a metre) suitable for quilting and patchwork.
- An extensive range of embroidery cottons and specialist threads available
- Scrap booking accessories

**Something for everyone so don't miss out!**

**EVERYTHING BELOW COST & MORE**

## INDOOR BOWLING CLUB WINNERS 2014

**SINGLES:** Women: Winner Linda Varcoe; Runner up Gaynor Gilchrist. Men: Not played

**PAIRS:** Winner Anne Cotton (s) and Terry McCloy; Runner up Irene O'Malley (s) and Audrey Graham.

**TRIPLES:** Ross Arnold (s), Audrey Graham and Betty Huddleston; Runner up Linda Varcoe (s), Coleen Stringer and Robin Moore.

**JEAN CARSON 4'S:** Graham Brown (s), Donella Hore, Pete Helm and Robin Moore; Terry McCloy (s), Margaret Kendall, John Morrison and Vanya Robertson.

**MOST IMPROVED JUNIOR:** Tania Nixon.

**PENNANTS:** A's Shirley Hunter 646, B's Lyn Murray 706, C's Ross Arnold 799 and D's Michael Chandler 714.

**RANFURLY v MANUHERIKIA (Sept 16th):** Manuherikia 63 points and Ranfurly 40 pts, 21 ends.

**PRYDE SHIELD:** Won for the first time by Ross Arnold (s), Terry McCloy, Irene O'Malley and Linda Varcoe (Robin Moore filled in for the third game).

**RAFFLE:** The Roasting dish raffle was won by Terry McCloy.

## CENTRAL AERIAL SERVICES

Steve services SKY TV and is still available for weekend installations and 'trouble' calls.

Give Steve a call at  
**CENTRAL AERIAL SERVICES**  
Phone Steve - 03 444 9294  
or 021 558 911 - Ranfurly



## SUPER STALLION

There's a very special Irishman living in the Maniototo who goes by the name of Brian to his friends, but Ballineen Blue Mountain to his many worldwide fans.

Brian is a purebred Irish Draught stallion who lives on the Crossan's Ranfurly farm and who is proudly owned by Tracy.

He is one of only two purebred stallions in NZ, but the only one in the Southern Hemisphere who has the highly sought after 'Lifetime Grade One' status after his name.

This status was gained through a very rigorous and involved inspection process that Brian undertook with the Irish Horse Society of Great Britain before he was imported into NZ in 2011.

Brian comes from a family of Champions in the UK and of 60 horses put forward for grading last year, only 4 gained Grade One, one of which was Brian's full brother who is now standing at Stud in Ireland.

The Irish Draught Horse was bred by farmers in Ireland as a versatile and valuable farm asset. They needed to be strong enough to pull a plough during the week, agile enough for the farmer to take fox hunting on a Saturday and sensible enough to take the family to church on Sunday.

They cross brilliantly with Thoroughbreds to produce sport horses for Olympic disciplines.

Tracy couriers Brian's semen throughout the country (a process for another issue!) and over this coming winter, due to high demand, Brian will go into quarantine for collection to enable his semen to be exported to Australia and the USA.

Brian and Tracy have taken out many Championships including Supreme Champion Horse at the Christchurch Show for the past two years, as well as having a lot of success in Dressage and Show jumping.

Brian is a much loved member of the Crossan family and after having a very privileged start in life, is now just a typical Maniototo bloke!



Tracy and Brian at the 2013 Canterbury Show where they won Champion in hand horse and Championship Ridden Stallion.



## TRIPLE F CHALLENGE

For the fifth year running Rural Women New Zealand will hold their Triple F Challenge (stands for fitness, fun and friendship) on the Otago Central Rail Trail and they're inviting you to join in! Participants will bike or walk the trail between 17th - 19th April 2015.

Every year they have had a special guest come along on the adventure and, famous for her 'Why Not' attitude, That Blind Woman Julie Woods will ride tandem with her husband for the challenge. Julie will also be the dinner guest speaker at the Friday night dinner in Becks. This will be a great opportunity for those who were unable to make the event held recently where Julie spoke at the Ranfurly Rugby Clubrooms.

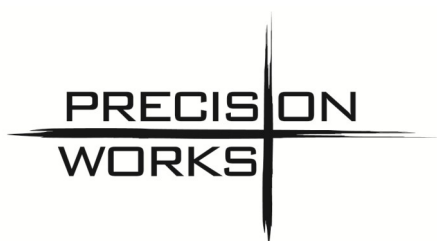
During the Triple F challenge, RWNZ will be raising funds for the Blind foundation and their work within our rural communities.



The group will also visit the Maniototo International Curling rink for some 'hot time on the ice' as well as Hayes Engineering Works in Otarehau.

This is a great chance to see our own slice of paradise by foot or bike - especially if you're a local who hasn't yet knocked off the Otago Central Rail Trail.

Registrations close on the 30th of November so it's time to get yourself or a group together and register by calling Pat Macaulay on (03) 484 7066 or (027) 201 6921. Registration form and further details are available on [www.ruralwomen.org.nz](http://www.ruralwomen.org.nz). Locals considering participating can chat to Pat regarding a day registration option (i.e. perhaps not staying in accommodation along the way but still walking or riding the trail).



**Agricultural Spraying  
Precision Drilling  
Direct Drilling**

***Talk to James Pyle about Fodder  
Beet and Spray and Drill packages  
0274479822***

**Proudly servicing  
the Maniototo**



## RANFURLY SWIMMING POOL

### Ranfurly Pool Team Leader Fixed Term Contract

We are looking to recruit a team leader for the coming season. This person will be responsible for the day to day operation of the pool including pool crew, rosters, health and safety, training and water quality.

The successful applicant will need to be a confident swimmer with the ability to gain the Pool Lifeguard Practising Certificate. Full training for the qualification is available to the right person if this is not already held. A current first aid certificate is required. Customer service, safety for our pool users and presentation of the pool facility is critically important therefore we require a motivated person with a positive, friendly can-do attitude who can work independently.

This is a fixed term full time position from mid-November 2014 until March/April 2015 and requires some weekend work.

### Pool Crew Position Fixed Term Contract

Ideally a sporty active person, the applicant will need to be confident swimmer (able to swim eight lengths of the pool within 6 minutes as well as other strokes/techniques) with ability to gain the Pool Lifeguard Practising Certificate. Full training for this qualification is available to the right person if this is not already held. A current first aid certificate must be obtained.

This person will assist with the efficient and effective day-to-day operation of the pool. Customer service is a very important part of this position so requires someone with a positive, friendly can-do attitude.

This is also a fixed term full time position from mid-November 2014 until March/April 2015 and requires some weekend work.

Please apply with your letter of application and copy of your CV to:

Tracye Stedman  
Personnel Officer  
via email  
[tas@codc.govt.nz](mailto:tas@codc.govt.nz),  
or post to  
PO Box 122  
Alexandra



Applications close on Monday, 20 October 2014.

Spring has not bolted, yes we have enjoyed some lovely days and have had some gentle rain, but frosts continue to slow the growth. The bulbs in warm sunny positions are flowering well, but in cooler shadier parts they are still to bloom. I am pleased to say that the Prunus trees which were partially flowering in July (completely out of season) are flowering again when they are meant to, which is lovely because blossoms and bulbs are the mainstay of our Spring gardens. If you are planning to plant some Prunus trees and have the room for quite a few, consider early, mid and late flowering varieties. Here we have beautiful flowering blossoms until well into November.

I get a lot of pleasure out of people enjoying the garden and no more so than the grandchildren. Recently Lucy had her 7<sup>th</sup> birthday party, and had four little friends on ponies who had great fun having a treasure hunt on horseback, which took them for quite a long ride eventually ending up at the boatshed in the bottom of the garden for a party. They had a Pinata which Mummy hung under a weeping willow tree by the nearby pond. Believed to have a rich Mexican history, it is a paper-mache toy and in this case, the shape of a castle and pink of course. It is filled with sweets and the children take turns to hit it with a stick until it falls to pieces and the sweets fall out. I loved seeing them running around and hiding in fun places and enjoying their party for hours. A super day.

Yesterday my sister brought me some large bulbs called Galtonia candicans, commonly known as a summer hyacinth, which is quite tall, with white flowers in late summer. I have admired it for years and tried seeds from her with no success, but decent sized bulbs should be another thing. I know of a few grown locally and know they like sun, a well drained soil, and not over crowded by other plants, but if gardeners have other tips about them, I'd love to know more. I think it is one of those plants that will be happy in the Maniototo if planted in just the right place.

Get the veggie garden ready for planting but do not plant until close to Labour weekend. I was thrilled to see another keen young person preparing a fabulous vegetable garden, and has plans for a Berry garden too.

Keep pruning, spraying for weeds, fertilising and mowing lawns.

Happy gardening  
Jane



## COMMUNITY TRUST OF MANIOTOTO MANIOTOTO TRUST FUND

Funding applications are invited from:

- ✓ Individuals, or community groups within the Maniototo
- ✓ Must have clear benefits for the Maniototo Community

For queries about the funding scheme or assistance filling in your application contact:

Janice Remnant (Property and Facilities Officer)  
Ranfurly Service Centre  
Telephone: (03) 444-9170

Application forms available from:

Ranfurly Service Centre  
15 Pery Street  
Ranfurly  
email: [janice.remnant@codc.govt.nz](mailto:janice.remnant@codc.govt.nz)

Applications close: 5pm Friday, 7 November 2014

## REAR BETTER CALVES

### SPRAYFO Calf Milk Replacers

- Premium Quality
- High Digestibility
- Better Mixing
- Safer Calf Rearing

**Sprayfo Blue CMR 20kg - \$79.95 +GST**

A Premium Quality milk replacer for young calves

**Sprayfo Red CMR 20kg - \$69.50 +GST**

A Quality CMR for older calves or use to fortify milk

**LARGE USER PRICING AVAILABLE**

**AgriVantage**  
Proven Animal Nutrition

Phone Brad on 027 333 2033 to find out more

## FOR AERIAL APPLICATIONS OF:

- Liquid fertilizers
- Lime
- Fine particulates
- Feeding
- Suspension fertilisers
- Spraying
- Solid fertilisers

**Give Marc a call on 027 522 1007**



## TRIPADVISOR EXCELLENCE AWARD

The Ida Valley Kitchen has been awarded a 2014 Certificate of Excellence from online customer feedback website, Tripadvisor.

Visitors to the café, owned by Philippa Pope, scored it 5 out of 5 star for service, food quality and overall experience. Tripadvisor celebrate hospitality excellence around the world. Ida Valley Kitchen consistently earned outstanding feedback from travellers and, based on reviews, received a certificate of excellence. Philippa says, 'It was an unexpected, pleasant surprise' and thanks her staff for providing a quality experience.



Philippa Pope, Cate Herlihy, Joyce Greer and Angela McKnight celebrate their award at a recent trip to Cirque de Soliel in Auckland.



## FLIGHT CENTRE VISITS TO RANFURLY

Planning a holiday & need expert advice?

**Jodie McSkimming will be at  
E-Central Café in Ranfurly on  
October 15th and 29th to assist with  
all your travel requirements.**

Contact me anytime on **021 0242 9026**  
and leave message for me to call back or email me at  
[jodie.mcskimming.nz@flightcentre.co.nz](mailto:jodie.mcskimming.nz@flightcentre.co.nz)

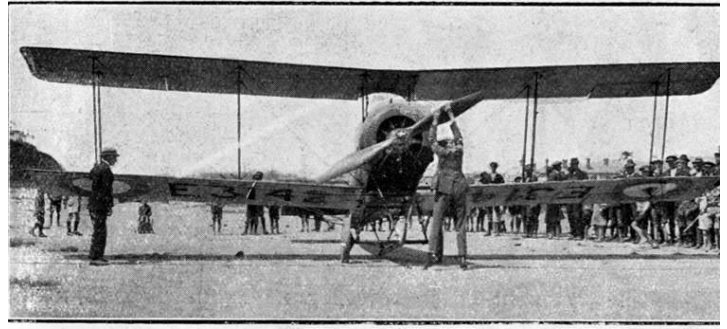
**LOWEST AIRFARE  
GUARANTEE**  
We will beat available airfare quotes  
for flights departing from  
New Zealand or you fly free!  
Conditions apply

\*Conditions: This offer is only valid for bookings with Jodie McSkimming and is only valid for the first 20 people who present this ad. Customers must spend a minimum of \$500 per booking on travel. Offer cannot be used in conjunction with any other offer. \$50 will be deducted from the total cost of the booking on full payment. This offer must be presented at time of quotation & offer must be redeemed by 15 Jul 14. One free coffee per person. Offer is non-transferable & not redeemable for cash or foreign exchange. Only one offer to be used per booking. Flight Centre (NZ) Limited standard terms & conditions apply, please refer to [www.flightcentre.co.nz/aboutus/flightbookingtermsandconditions](http://www.flightcentre.co.nz/aboutus/flightbookingtermsandconditions). \*Lowest Airfare Guarantee: Applies to genuine airfare quotes from airlines & New Zealand registered businesses & websites for flights departing from New Zealand. Quotes must be in writing in New Zealand dollars, inclusive of all booking fees & taxes & must be presented to us prior to booking. Airfare must be available & able to be booked by the general public when you bring it to us. It must also be for same dates, flight routing, flight class & number of people. Airfares available due to membership of a group or corporate entity or subscription to a closed group are excluded. We will beat the price for airfares by \$1 & give each traveller a \$20 travel voucher for full terms & conditions [www.flightcentre.co.nz/about-us/lowest-airfare-guarantee](http://www.flightcentre.co.nz/about-us/lowest-airfare-guarantee) 1 021 26288

## LOOKING BACK

Jim Sullivan

The first plane to land in Maniototo touched down near Ranfurly on the morning of 28 June 1921 (below).



*The New Zealand Aero Company Avro at Dunedin early in 1921. Later in the year it became the first plane to land in Maniototo. (Otago Witness)*

It was piloted by Maurice Buckley and F Mallard. Flights were offered and the usual fee in those days was £2 (about \$150 these days). A large crowd gathered and county council chairman T A Lewis welcomed the fliers to the district. Peter Law (reputed to be the richest man in the area) took the first flight but there were no other takers so Buckley offered a free ride to the first lady to volunteer and Ada McLaughlan stepped forward amidst the cheers of the crowd. According to the *Mount Ida Chronicle*, "the Avro then moved off as gracefully as a dove."

Then came the rush as several hundred people booked up for a ride. The pilot described the air as "choppy" and "bumpy" especially toward the hills around Naseby. The following day flying continued in fine weather with about three hundred people coming from as far as Lauder to see the plane with about thirty people actually taking to the air.

"One had to but look at their faces which were filled with ecstasy and delight as they alighted from the machine to know that they had enjoyed their fly in the air." Two 'old and highly respected' residents of the district took to the air and 'the extreme satisfaction which shone in their eyes when they descended was well worth seeing and the pluck of the young girls was also worthy of note.'

As the plane took off for Middlemarch on the 30<sup>th</sup> June it carried letters to Dunedin sent by Peter Law who thus became the first person to send airmail from Ranfurly.

**PERFINTX™**  
Hamilton Runs Ltd.

**Gerard & Renee Weir**  
**Perfintx Sheep Stud**  
278 Orangapai Rd  
Ranfurly  
**(03) 4448212**



**POSITIVELY MANIOTOTO  
MONTHLY BUSINESS DIRECTORY**



**NEW LOCAL  
RABBITER**

Available now to rid your home, farm or property of rabbits.

Steve and his team of dogs are now based in the Maniototo.

Call 021 858 075 for a quote.

**WADSWORTH LTD  
FIRE WOOD PROCESSING**

Offering flexible, affordable, cost effective firewood processing and tree felling.

Supplier of retail and wholesale firewood.

Tony Wadsworth 444 9529  
or 027 444 9529  
t-wass@xtra.co.nz



**TRAVELLING?**

Holiday or Business?

Contact the expert who can create an inspiring tailor made holiday for you.

Phone (03) 432 4172 or (027) 432 4177

Email [lynne@nztravelbrokers.co.nz](mailto:lynne@nztravelbrokers.co.nz)

**nz  
TravelBrokers**  
*Lynne Sinclair*

\*TAANZ approved Travel Broker for NZ Travel Brokers  
WINNER- TAANZ AWARD BEST BROKER BRAND

**MCER**

**Mining &  
Construction  
Equipment  
Repairs Ltd**



Heavy equipment repairs & servicing  
Component overhauls  
Hydraulic Repairs  
Electrical repairs  
Mobile welding

**Phone:** Paul Bain 0272531137, 03 4897317  
or [mcrepairs@xtra.co.nz](mailto:mcrepairs@xtra.co.nz)

**Workshop:** C/o Hyslop Rural, 28 Bell Street,  
Outram



**ANDREW P. HAYES**

**BUSINESS AND TAXATION CONSULTANT,  
OAMARU**

Eden Street, Oamaru P.O. Box 168, Oamaru

Telephone: (03) 434 8593 Mobile (027) 221 6343

Fax: (03) 434 8586

Email: [andrew@andrewphayes.co.nz](mailto:andrew@andrewphayes.co.nz)

at the Maniototo Service Centre Pery Street,  
2nd Thursday each month

**Maniototo  
CONTRACTING**

Ian and Judy Hore 2004 LTD

**Hay • Baleage • Mowing  
Cultivation • Drilling • Subsoiling**

Phone:

027 221 9803 • (03) 444 9405

[ilhore@yahoo.co.nz](mailto:ilhore@yahoo.co.nz)



**FOLEYS**



**Need a plumber?**

Call 0800 30 35 30  
[flan@foleyplumbers.co.nz](mailto:flan@foleyplumbers.co.nz)



**Zara Crutchley**  
B.Com Ag (VFM) MPINZ MNZIPIM  
Registered Valuer

**TelferYoung**

Valuers Property Advisors

**TelferYoung (Otago) Limited**

T: 03 208 4450 Freephone: 0508 448 800

M: 021 228 7444

[zara.crutchley@telferyoung.com](mailto:zara.crutchley@telferyoung.com)

[telferyoung.com](http://telferyoung.com)

Incorporating Macpherson Valuation celebrating 50 years 2013

# The Burn Budget

Your community calendar + a few extras!

10 Pery Street, Ranfurly.  
444 9729  
burn729am@scorch.co.nz



## WHAT'S ON BURN AND WHEN

|   |  |
|---|--|
| <b>Becker's Transport Road Reports, Cancellations &amp; Water Notices - Top of the hour</b> | <b>6am - 10am</b>                                      |
| <b>Helena's Kitchen Birthday calls</b>  | 7.50am weekdays/ 9.20am weekends                       |
| <b>McLarens Machinery Buy, Sell and Swap</b>  | 9.30am , 11.30am and 3.30pm weekdays                   |
| <b>Vet Centre Community Notices</b>   | 10.30am, 2.30pm and 5.30pm weekdays                    |
| <b>Farming Show</b>   | 12noon - 1pm weekdays                                  |
| <b>Monday Night Memories</b>  | 7pm - 9pm Mondays                                      |
| <b>Groundworks Ltd Country Show</b>   | 6pm - 8pm Wednesdays & 9am - 12 noon Sundays           |
| <b>Entire Plumbing Rock Show</b>  | 6pm - 8pm Thursdays                                    |
| <b>Combined Churches Choices</b>  | 8am - 9am Sundays                                      |
| <b>McLarens Sports Round Up</b>   | 9.30am Sundays   |
| <b>The Hits Weekends</b>  | 6pm Friday nights and after midday Saturday and Sunday |

For all notices placed in Buy, Sell & Swap, Live and Community Notices for individuals or groups, a gold coin donation would be very much appreciated (other than community groups who already make an annual donation). Thank you.



### MONDAYS

|                        |  |
|------------------------|--|
| Ceramics Club:         | 10am at the Art Centre. Contact Carol 444 9264 or Maureen Kearney 444 9449       |
| Ranfurly Karate Club:  | 6-8pm for beginners & lower grades, Maniototo Arts Centre. \$1pp – call 444 9831 |
| Monday Night Memories: | Burn 729am 7-9pm, 444 9729   |



### TUESDAYS

|                        |   |
|------------------------|---|
| Pottery Group:         | Arts Centre, Reade Street, Ranfurly. Contact Denise 444 9985                        |
| Maniototo Ladies Golf: | Maniototo Golf Club 10.30am, tee off 11am. Contact Liz 444 9318 or Belinda 444 9185 |
| Uruuruwhenua:          | Smoking cessation 10.30am—2.30pm and from 6.30pm - Ranfurly Plunket Rooms.          |

### WEDNESDAYS

|                          |  |
|--------------------------|--|
| Catholic Women's League: | Op Shop. Open 10.30am - 4.30pm. Contact Francie on 444 9243                |
| Artists Group:           | 1pm, Arts Centre, Reade Street, Ranfurly. Contact Norma 444 7076           |
| Line Dancing:            | 4pm, Arts Centre. Contact Joan 444 9612                                    |
| Ranfurly Karate:         | Graded Members, Arts Centre 6-8pm. \$1pp. Call 444 9831                    |
| Maniototo Bridge:        | 7pm Wallace Memorial Rooms. New members very welcome. Call Ang on 444 9231 |
| Country Show:            | Burn 729am 6-8pm. 444 9729   |



### THURSDAYS

|                  |   |
|------------------|---|
| Arts and Crafts: | Call Kim 444 9652 or Jill 444 9844 for further details      |
| Squash Club:     | 6.30 - 8pm at Maniototo Park Stadium, Contact Jude 444 9718 |
| Rock Show:       | Burn 729am. 6pm - 8pm. 444 9729                             |



### FRIDAYS

|                          |  |
|--------------------------|--|
| Catholic Women's League: | Op Shop. Open 10.30am—4.30pm. All welcome. Contact Francie on 444 9243 |
|--------------------------|--|



### SATURDAYS

|                 |   |
|-----------------|---|
| Maniototo Golf: | Tee off 11am. Contact Wayne for details on 444 9491 |
|-----------------|---|

### SUNDAYS

|                      |   |
|----------------------|---|
| Presbyterian Church: | 10am Family Church Service at Ranfurly                                |
| Naseby Golf:         | Club Competition. Tee off 1pm. Contact Carol 444 9949 or Syd 444 9604 |
| Catholic Church:     | 5pm Mass, Sacred Heart Catholic Church, Stuart Road, Ranfurly         |



|                                   |                    |                   |                                     |
|-----------------------------------|--------------------|-------------------|-------------------------------------|
| <b>Maniototo Toy Library</b>      | 2nd Monday         | 11.30am – 12.30pm | Renee 444 8212 or Michelle 444 9034 |
| <b>Maniototo Spinners</b>         | 2nd and 4th Monday | 10am – 3pm        | Bonnie 444 9932 or Karen 444 9814   |
| <b>Plunket Playgroup</b>          | 1st Wednesday      |                   | Heather 444 8353                    |
| <b>Garden Club</b>                | 1st Thursday       | 7.30pm            | Mary 444 9435                       |
| <b>St Hilda's Anglican Church</b> | 1st Sunday         | 10.30am           | St Hilda's Church, Ranfurly         |
| <b>Naseby Vision</b>              | 3rd Saturday       | 3pm               | Naseby Fire Brigade Rooms 444 9996  |

Please note some dates may alter over the school holidays