

FREE!

Positively MANIOTOTO!



Download from www.maniototo.co.nz/contacts-links December 2019 - January 2020

Photo shoot of Eden Hore Collection in wild Maniototo

MERINO RECORD ATTEMPT

A well anticipated shearing world record attempt to be held in December has now been postponed to Saturday the 4th of January at 'The Bend' in Patearoa.



Stacey is watched by supporters, Mouse O'Neil and Jay Stringer

'The Bend' is home to the McAtamney family and often serves as a training ground for aspiring shearers. In early 2020 it will host well-known shearing record breaker, Stacey Te Huia in another record bid.

As a special tribute to daughter Shaylyn, who died at the age of 16 in 2015, it doubles as a fundraiser for suicide awareness programmes and to spread awareness about all forms of violence and suicide.

Stacey (pictured right at the Bend) is contending for the solo 9hrs fine wool wethers record bid. The target on the shearing board will be the record of 418 shorn by Rakaia shearer Grant Smith on November 4, 1999, one of the oldest records on the books of the World Sheep Shearing Records Society.



PHOTO SHOOT OF EDEN HORE COLLECTION

A selection of garments from the Eden Hore Central Otago fashion range took centre-stage once again during a three-day photo shoot in Central Otago last month.

The purpose of the photo shoot was to create moving and still images of the garments while being worn to capture their cut and fabric flow, and to demonstrate the relevance of their design to present-day design and fashion. The still and videographed images will be used in displays and feature articles about the collection.

Internationally renowned fashion photographer Derek Henderson, who covered Jacinda Adern's feature in Vogue magazine, led the project. Accompanying him was stylist Megha Kapoor, make-up artist Peter Beard, videographer Cam Neate, and model Hannah Clark. Te Papa partnered with Central Otago District Council to sponsor the shoot, and all participants were generous with their time, to enable affordability.

Site locations included Bannockburn sluicings, Poolburn Dam, St Bathans' Blue Lake and Mt Buster Road (pictured below).



Stylist Megha Kapoor also created a feature article about the collection in her high-end fashion magazine 'Inprint'. The magazine, which is sold in 52

FORWARD PLANNING - DECEMBER 2019



**Positively
MANIOTOTO!**

Proudly produced and distributed by Burn729am/87.9fm

SUNDAY	MONDAY	TUESDAY	WEDNESDAY	THURSDAY	FRIDAY	SATURDAY
1	2	3	4	5 ●	6 FOH Raffle (pg 3)	7 Night at the Races (pg 6)
8	9	10 Library Book Chat (pg 20)	11	12 ■ Late Night Shopping and Santa's Grotto (pg 25)	13 Kyebrun Pot Luck (pg 3)	14
15	16	17 Kokonga Carol Service (pg 3)	18 ► Business breakfast (pg 3) ► Travel Talk (pg 19)	19 ● School Holiday Programme (pg 4)	20 Gimmerburn Christmas Catch Up (pg 3)	21
22 Oturehua Carol Service (pg 3)	23 School Holiday Programme (pg 4)	24 Naseby & Ranfurly Carol Services (pg 3)	25 CHRISTMAS DAY	26 BOXING DAY	27	28 ■ ► Garden Club Tour (pg 34) ► Steptoe Auction (pg 3)
29 Naseby Golf Tournament (pg 3)	30 ► Naseby book sale ► Naseby golf AGM (pg 3)	31				

KERBSIDE COLLECTION

Ranfurly, Naseby

- Blue lid bin (glass only)
- Red lid bin (household rubbish)
- Yellow lid bin (plastic and paper)

Burn729am/87.9fm - Ranfurly

Local news, local weather and road reports, text requests and evening shows.

"The best word of mouth in town"

444 9729 / 027 287 6729 burn729am@gmail.co.nz

JANUARY 2020

SUNDAY	MONDAY	TUESDAY	WEDNESDAY	THURSDAY	FRIDAY	SATURDAY
			1 NEW YEARS DAY Naseby Family Fun Day (pg 4)	2 DAY AFTER NEW YEARS DAY	3	4 ● Merino Record Attempt (pg 1)
5 Hayes Engineering Operating Day (pg 27)	6	7 Waipiata bowling grandmothers triples (pg 3)	8	9 ■	10	11 ► Burn Pool Party (pg 19) ► Health services AGM (pg 25)
12	13	14	15 ► Business breakfast (pg 3) ► Travel Talk	16 ●	17	18
19	20	21	22	23 ■	24	25
26	27	28	29	30 ● Floral Art Demo (pg 3)	31	



POSITIVELY MANIOTOTO **Community Notice Board**

THANK YOU

O'Malley (Kit)

Pattie, Mark, Pam, Stephen, James and Suzy would like to thank all who helped us when we lost Kit (Dad). The food, flowers, visits and many, many cards were all very much appreciated. To the staff at the Maniototo Hospital, you were all so kind to us and Dr Verne for his quiet help. Many thanks to Mike, Noelene and Irene for their many, many visits to Kit. We will never forget.

GARDEN CLUB EVENTS

On Thursday, January 30th 2020 the Maniototo Garden Club are having a floral art practise with Marilyn Swinbourn at the Arts Centre at 7.30pm. Come and learn about what's required to enter the Floral Art competition at the Maniototo A & P Show.

The Maniototo Garden Club meeting will be held on Thursday the 5th of March, at the above venue, same time. Beryl Lee will be talking about growing Lilacs. All welcome. All enquiries to Mary Wright on 444 9435.

COMMUNITY XMAS CELEBRATIONS

This year **Kyeburn** will be holding their potluck dinner on Friday the 13th of December kicking off at 6-30pm. Same as usual, bring your own plate, cutlery, drink and plate to share (and don't forget a clearly named gift to go in the sack for the kids).

The **Gimmerburn** Christmas Catch Up will be on Friday the 20th of December at Gimmerburn Hall from 5pm onwards. It will be a potluck dinner and drinks and a good ol' catch up with neighbours. All past and present residents welcome.

NASEBY GOLF TOURNAMENT

Naseby Golf Club are holding their annual Social Tournament on Sunday the 29th of December. It's a Stableford Tee Off at 12.30pm. Entry Fee is \$20.00 and there will be a BBQ to follow. All welcome.

NASEBY GOLF AGM

Naseby Golf Club are holding their 2019 Annual General Meeting at the Naseby Golf Club Rooms on Monday the 30th of December at 10am. Apologies to Lorraine Lobb on 444 9512.

WAIPIATA BOWLING CLUB

Waipiata Bowling Club Grandmothers Triples 1pm Tuesday 7th January 2020. Entries to Kris Carey 444 9107 by 5/1/20.

SINGING GROUP

A local singing group has started up in the Maniototo Arts Centre, 7pm on Wednesdays. Contact Sandra Stuart on 027 421 1076 if you would like to join.

PRESBYTERIAN CAROL SERVICES

Kokonga Carol Service – 7pm 17th December
Oturehua Carol Service – 7pm 22nd December
Naseby Carol Service – 7pm Christmas Eve
Ranfurly Carol Service – 10pm Christmas Eve

HOSPITAL RAFFLE

Friends of the Hospital are holding their annual raffle day outside More Than Books on Friday the 6th of December 2019 from 9.30am

STEPTOE AUCTION

The Maniototo Lions Steptoe auction is being held at Naseby on Saturday December the 28th at Naseby Town Hall, 4pm.

Donations of goods contact Tony O'Neill, phone 027 272 3649

BUSINESS BREAKFAST

The January Business Breakfast will be held on Wednesday the 15th of January, 8am, venue to be advised.

All are very welcome. For further information about the Maniototo Business Breakfasts chat to Janyne Fletcher at her gallery in Charlemont Street.



OFS Insurance Brokers
Locally owned



Hunter Stevenson
Insurance Broker

Need Personal Non-biased Insurance Advice for ...

Your farm or business?
Your home and contents?
Your life and health? Your income protection?

OFS Insurance Brokers are locally owned and managed insurance specialists offering personal advice and a no-obligation chat about your insurance needs.

Call Hunter today

p: 034716800
f: 034717466
m: 027 438 1288
e: hstevenson@ofs.net.nz

NEW EMAIL FOR PM & BURN

Positively Maniototo has a new email address so please note this in your email contacts. It is **PositivelyManiototo@gmail.com** This enables content to be directed to one place in the future. The Radio Station also has a new email burn729am@gmail.com

FUN DAY IN NASEBY

Fill your first day of 2020 at the Naseby Family Fun Day on Wednesday the 1st of January at the Naseby Recreation Grounds from 12 noon. Enjoy a day out in the sun with the family, lots of games and activities to enjoy Gold coin donation on entry, raffle tickets available for great local prizes. Car boot sale sites available: please text Paul at 021 992 865 for more info.

ANNUAL MANIOTOTO A & P SHOW

The annual Maniototo A & P Show will be held on Wednesday the 20th of February 2020.



The theme for Horticultural and Industrial Division is **'Here comes the Cavalcade'**.

New additions to the schedule include a beer brewing section and honey and a herb filled tussy mussy. The Feature Section is a homemade go-kart - something we hope will inspire a family project. The schedule will be available from 'more than books' from the 1st of December. It can also be emailed on request, and will be loaded onto the facebook page, maniototo A & P association. Sarah (secretary) can be contacted by email maniototoshow.industry.hort@gmail.com

CENTENNIAL ART DECO GALLERY

The Centennial Milk Bar is now open for the season which ends on 30th April, 2020. Opening hours are 11am until 3pm. Remember that local crafts are for sale, which include cards for every occasion, jam, knitwear and other knick knacks, plus the a walk down memory lane. We would appreciate some help from the community so that the local people meet our many visitors and keep the Milkbar open over the summer. If you have a couple of hours a month or week, there are

NASEBY
Family Fun Day
& Car Boot Sale

1st January 2020
Naseby Recreation Grounds
12pm-3pm
Gold Coin Donation on Entry

Text Paul @ 021 992 865 re the Car Boot Sale

Festive School
Holiday Programme 2019

Come along and join the festive fun this school holidays...
Central Otago District Libraries will be celebrating with lots of storytelling, Christmas crafts and jolly visits from Santa.

Maniototo Library 2pm - 3pm

Thursday 19 December	Christmas Crafts
Monday 23 December	Santa's Visit

*All welcome to come along and meet Santa.
Bookings are essential for craft making sessions.
Under 5s are to be accompanied by an adult.*



Alexandra Library
Ph: (03) 448 9412 Em: alexandra.library@codc.govt.nz
Roxburgh Library
Ph: (03) 446 8105 Em: roxburgh.library@codc.govt.nz

Cromwell Library
Ph: (03) 445 0213 Em: cromwell.library@codc.govt.nz
Maniototo Library
Ph: (03) 444 9348 Em: maniototo.library@codc.govt.nz

Thank You

Acknowledgement: HORE (nee Lake), Suzanne Joan

(15 March 1952 – 3 November 2019)

Jim, Charlie, Andrew & families would like to express our sincere thanks to the many friends, extended family, acquaintances and community members for the kindness, sympathy and support expressed following the recent loss of our beloved Sue.

Our family has been overwhelmed with the many gestures of support and messages throughout this difficult time. We are extremely grateful to every person who has sent cards, provided baking & food, sent flowers or gift baskets, helped with farm work or rallied in support to help us prepare for Sue's funeral service.

Thank you to all those that attended Sue's farewell. It was a true reflection of Sue's life that so many people took the time to join us in celebrating her life. We miss her greatly.

Much Love and Appreciation, the Hore Family.

Beautiful People – A Tribute to Sue Hore

The circle of "Stonehenge" has endured centuries in rich English soil,

Encompassed by mortal rocks standing tall and loyal,

Personified by the "Hore family" does Stonehenge Station reflect,

Pride, desire and passion, and the art of respect.

As day surrenders to night, darkness cloaking the most enduring of man,

Shadows of heart-break cast its veil upon this land,

A cruel twist of fate dealt the harshest of blows,

A cornerstone taken tragically to the Earth below.

A devoted wife and proud mother of two,

A testament of life to this beautiful lady named Sue,

Gardening and Cooking come to the fore,

You never went famished at the Stonehenge door!

Lake Onslow run block, majestically the Wethers wait,

Mustering on "Sure footed" steeds at a steady gait,

Landmark Apostles' predominant at the Quartz Reef ridge

Deep Creek hut aboding a welcome, above the Hardwood Bridge

Adorning Sun's rays strike where the Pillar did soar,

Memory of reflection to those who have gone before,

Sadly the "Maker's name" calls all thee,

Fortitude and Strength preordains our destiny.

But we are not alone as we bid farewell,

Family and friends to reflect and dwell,

Tears or sorrow to flow, memories to keep,

"Roses will bloom" while the "Willows will weep".

R.J.S. ELLIOT.

ADVENTURE AWAITS AT YOUR LIBRARY!

SUMMER READING CHALLENGE
December 2019 - 24 January 2020

Enjoy adventures with Baxter these summer holidays and have a go at some fun activities!



SIGN UP AT YOUR LIBRARY TODAY!

Alexandra Library
Ph: (03) 448 9412 Eml: alexandra.library@codc.govt.nz

Roxburgh Library
Ph: (03) 446 8105 Eml: roxburgh.library@codc.govt.nz

Cromwell Library
Ph: (03) 445 0213 Eml: cromwell.library@codc.govt.nz

Maniototo Library
Ph: (03) 444 9348 Eml: maniototo.library@codc.govt.nz

CHALLENGE !

Ranfurly
SAVE 6c per LITRE

With your *My Challenge Card*
Keep an eye out for our 10c discount days!

Super Gold card holders get 10c per litre discount.

Also Farmlands card holders get 12c per litre off.

You'll also earn 1 point for every \$1 you spend*, which you can redeem for rewards in store.

* Excluding purchases of cigarettes, Points expire 2 years from the date the relevant points were awarded. Full terms and conditions available at www.mychallenge.co.nz.

Garden shop
Fresh plants every week

Plants and seedlings, vegetables and flowers, tomatoes, herbs, succulents, grasses, roses, lavender, seeds and seed potatoes. Also, compost, potting mix, fertiliser, sprays and minerals.

Challenge! Ranfurly will be closed on Christmas day

...Continued from front page

countries, displays Eden Hore Central Otago garments and accessories paired with present-day high-end fashion from designers such as Christian Dior, Gucci, Prada, Versace and Chanel.

It demonstrates the contemporary relevance of Eden's garments, and how they can easily hold their own alongside some of the world's leaders in fashion design.

Megha writes "We pay tribute to Eden by breathing new life into his collection."

MANIOTOTO MOA

Maniototo has recently been well known for the findings of Moa remains. Closeburn Station at Gimmerburn has added to this. At the end of last year Tony Clarke's right-hand-man, Matt was digging out a pond and came across Moa bones. In March this year Paul Scofield - Senior Curator of Natural History at Christchurch University and Museum, came to visit. He sent back some information with what types of Moa and the bones are around 2000 years old. There are three types represented. Type A Moa is Euryapteryx which is stout legged. Type B is Dinornis which is the Giant Moa. Type C is Emeus which is a small Moa.

Te Huna a te Moa, the Otago Museum's exhibit that showcases the Moa footprints extracted from the Kyeburn River, is now open to the public. It's worth a visit so call in to the Tāngata Whenua gallery in Dunedin on level 1.



The Kyeburn Public Library Committee want to locate any relevant info from local people of any sites or finds of moa bones, eggs or fossils in the Maniototo Area. It is proposed, in conjunction with the Otago Museum, that such information be incorporated on a display panel together with recent moa footprints in the Kyeburn riverbed. Contact Robert Scott on 444 9288 or Nick Mackenzie on 444 9055.

FARM AWARD FOR STONHENGE

Maniototo sheep and beef farmers Andrew and Francine Hore have received acknowledgement of the efforts Stonehenge Merinos have shown in terms of sensitivity to both animals and the ecosystem. The Reda Group is a leader in the production of Merino wool fabrics and the awards held at their annual conference in Queenstown last month acknowledged its second ever sustainability award winner. Stonehenge Merinos was established in 1969 by Andrew's father Jim and his brother Neville. The couple, who are fourth generation farmers on the family's 18,000 hectare property, attribute much of the work put in by Andrew's parents, Jim and Sue.



R18

Saturday 7th December 2019 Maniototo Stadium

Join us for a night for fun and entertaining night featuring:
8 exciting steeple chase races on the big screen
Light supper • Tote betting • Bar • Cash Only (Bar/Tote)

Tickets \$25 each
\$250 TABLE
Purchase from Geraldine Dowling : 027 485 9693
Logan Dowling 027 634 6008
Doors open at 6.30pm - Totes open at 7.00pm - Race One 7.30pm

Wear your best racing outfit!



Prizes for:
Best Dressed Man
Best Dressed Lady
Best Dressed Couple

GREAT IDEA FOR YOUR END OF YEAR FUNCTION!
BOOK A TABLE!

Be part of the Big Race

Always wanted to take part in a race?
Now's your chance!

Purchase a horse for \$30 or
a Jockey for \$15 - Win Prizes!

Funds raised for Purchase of further IT
and Upgrading of Playground
and Surrounds.

AWS LEGAL
One firm
Full service
Delivered exceptionally

AWS Legal, situated at 77
Centennial Avenue, Alexandra.

Dave Gibson is always happy
to meet with his client base, at
home or at the office. Dave
deals with all clients in his
efficient and practical way,



Dave Gibson

bringing with this the outstanding expertise of
30 plus years in the law business. It has been a
pleasure meeting with clients during this year,
and Dave has appreciated being introduced to
new faces, and being involved in the wider
Maniototo Community.

For further information, please visit our Website
on www.awslegal.com

The Alexandra office number is **03 440 0026** or
to contact **Dave Gibson** direct **027 688 7332**

SUMMER LUGE BEGINS CONSTRUCTION

The Naseby Summer Luge Trust has reached its \$80,000 funding target and will shortly begin reconstructing the former Coronet Peak Cresta Run (Alpine Slide) at the Naseby Adventure Park. Located above the Maniototo curling and skating rinks, and in the trees adjacent to the Ice Luge. The ride will add another attraction to Naseby's offering of recreational activities.

Naseby Summer Luge Trust Chairperson Eric Swinbourn said *"Stage One, the fundraising, is now complete and it's exciting to now begin construction. We are extremely grateful to those who have supported us and shared our vision. This includes the Spijkerbosch and Proctor families who donated the ride to the Naseby community, those who have provided funding, Maniototo Ice Rink and those who will provide volunteer support and donated goods and services during the construction."*

Funding for the project has been secured from Community Trust of Otago (\$30,000), Give-a-Little donations (\$22,000), Alexander McMillan Trust (\$10,000), Lottery Grants Board (\$6,000), Lions Club of Maniototo (\$5,000), Naseby Vision (\$2,500), Foodstuffs (South Island) Community Trust/Maniototo Four Square (\$2,500), Community Trust of Maniototo/Maniototo Trust Fund (\$2,500) and several local donors. A second Give-a-Little campaign will begin shortly to help fund some of the minor operational equipment required.

Swinbourn adds *"We expect to complete construction before the end of summer, with commissioning and testing thereafter, and an official opening later in 2020."*

It is anticipated that the Naseby Summer Luge will initially operate daily during school holidays and weekends, and on-demand at other times. With a length of approximately 400 meters dropping over 30 meters it is expected that riders will reach up to 35 kph as they ride through the trees and past the Ice Luge track to finish near the curling and skating rinks.

For further information contact:

Eric Swinbourn, Chairperson, Naseby Summer Luge Trust on 03 444 9996



ANDREW P. HAYES

BUSINESS AND TAXATION CONSULTANT, OAMARU

Eden Street, Oamaru P.O. Box 168, Oamaru

Telephone: (03) 434 8593 Mobile (027) 221 6343

Fax: (03) 434 8586

Email: andrew@andrewphayes.co.nz

at the Maniototo Service Centre Pery Street,
2nd Thursday each month

janyne fletcher
photographer

Best wishes for the Festive Season and
thank you to everyone who has helped and
supported the gallery.



Open Seven Days, 10.30am to 2.30pm.

Gallery - 7 Charlemont St, Ranfurly
www.janynefletcher.co.nz

TRAIL RENTALS

RANFURLY • CENTRAL OTAGO • NEW ZEALAND

Explore the beauty and history of Central
Otago, the last piece of real New Zealand!

From \$69 per day hire an economical
small car or an twelve seater van.



Trail rentals and sales, 11 Thomas Street,
Ranfurly, Central Otago

email: info@trailrentals.co.nz | www.trailrentals.co.nz

Mobile: 021 0222 3314 | Phone: 03 444 9504

GOODBYE MORGAN FROM THE

MANIOTOTO

Morgan Grundy is the creator and face of Maniototo Café for four years now. Many will have enjoyed not only the café but also Morgan's cakes and catering (especially those grazing tables).



Not only is Morgan skilled in the kitchen and a talented business woman (Morgan was named Young Entrepreneur at the 2017 Central Otago World of Difference Awards, pictured above), Morgan has also run the Maniototo Business Breakfasts and was integral in running the annual Late Night Shopping nights.

However, as much as we will miss her, it's time for Morgan to move on to another adventure. Positively Maniototo caught up with Morgan as she prepares for her move ...

How did you end up coming to the Maniototo Morgan?

I followed Mum and Dad (Michelle and Martin Grundy) to the Maniototo from Auckland just over four years ago to set up and manage Maniototo Café after they had purchased the Four Square.

What have been some highlights of your time here?

I have absolutely loved living in the Maniototo, it's such a special place. Both the people and our surroundings. I have loved becoming a part of such a special community and will definitely miss that. I will also miss living in such a beautiful place, with so many amazing walking tracks just a few minutes away.

Also, I am really proud of the space we have created in the cafe, it really has become a hub of the community, a place locals are proud to bring their friends to, and a place talked about when you travel outside the area.

Very true! So, what is next?

Early next year it is time for me to head off on another adventure, this time across the ditch to Adelaide. I am definitely looking forward to the sunshine, the beaches and the wineries. I will miss all of my amazing customers, many of them I am now lucky enough to call friends.

Good luck to you Morgan from all of us! Any last words before you head off?

Thank you to the amazing team that have worked for me for the last four years and provided amazing food and excellent customer service that we are so well known for today! We couldn't have got here without you all.

I know you will be in excellent hands with Raelene Huddleston and the current team, and they will continue to provide the same awesome service!

And finally, thanks to Mum and Dad for choosing to live in such a cool part of the world and giving me the chance to come and be a part of it all for a few years!

"Morgan has been an inspiration to young business people throughout the district. The Maniototo Cafe is a superbly run operation and Morgan has run the business group extremely well over the last couple of years. I wish her well and am sure she will be a success wherever she travels."

Tim Cadogan (Mayor)

"Morgan, your hard work and dedication has paid off and you should be proud of the amazing resource you have created for the community! My kids sure love your hot chocolates!"

Anna Jefferies

"Morgan, not until you and the Maniototo Cafe came into my life, did I know I could be guaranteed a consistently good coffee, but that I would make a friend for life. Wishing you all the happiness in the world. We will miss you."

Fi Dowling

"You are an amazing soul. You've worked such hard, crazy hours at times and I have enjoyed doing all this with you over the years. Beautiful woman inside and out! All the best xx."

Ruby Albert

"It's sad to see a young and vibrant business person leaving the area. Morgan has been a huge asset within our business community and will be sadly missed. We wish her all the best for her future endeavours which we are sure will be successful."

Stephen and Kay Dunn



MANIOTOTO RODEO

Proudly brought to you by Waipiata Country Hotel

27 DEC
11AM START

WAIPIATA -
NASEBY ROAD

- GENERAL ENTRY: \$15
- CHILDREN 10-15 YRS: \$5
- CHILDREN UNDER 10: FREE
- FAMILY PASS: \$30

STRICTLY NO BYO

KIDS
ENTERTAINMENT!



armbuild.co.nz 08 4 4 RMBUILD 027 244 4824



AN AWESOME
FAMILY DAY OUT!

Hot dog! Watch out for heatstroke this summer.

Dogs do not perspire the way humans do; in fact, the only sweat glands that they have are on the pads of their feet. Dogs pant to cool themselves. As the surrounding environmental temperature and humidity increase this mechanism becomes less effective.

Signs of heatstroke include:

- Increased heart rate
- Excessive panting
- Increased salivation
- Bright red tongue
- Red or pale gums
- Thick, sticky saliva
- Depression
- Weakness
- Dizziness
- Vomiting (sometimes with blood)
- Diarrhoea
- As heatstroke progresses, it can cause seizures, coma, cardiac arrest, and death.

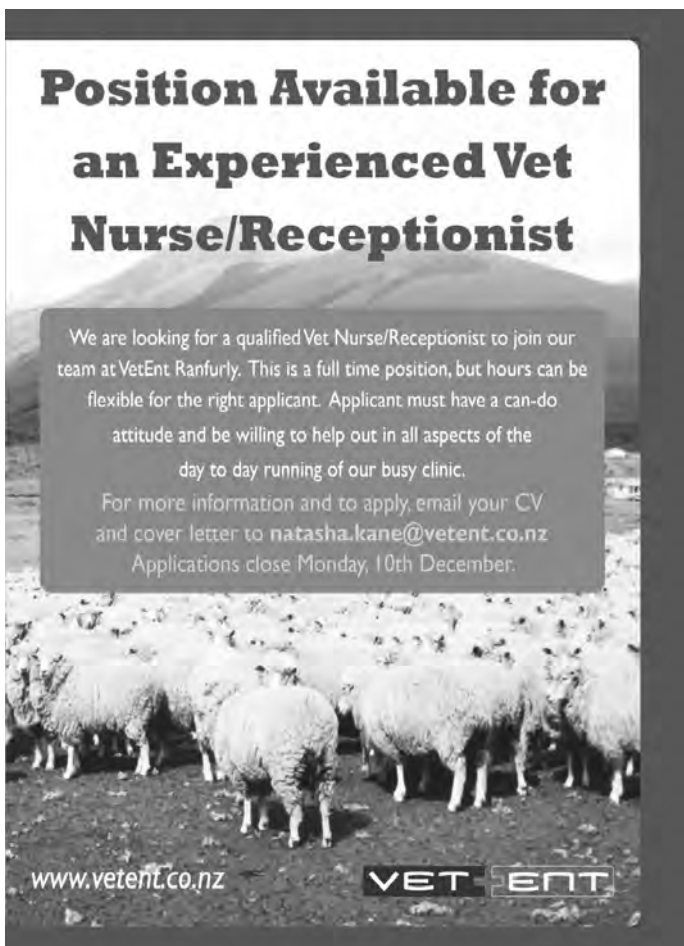
What should I do if my dog gets heatstroke?

Remove your dog from the hot area immediately. While transporting him immediately to your veterinarian,

lower his temperature by placing cool, wet towels over the back of the neck, under the forelimbs, and in the groin area. If possible, increase air movement around him with a fan or air conditioning. Be careful, however, as using very cold water can actually be counterproductive. **CAUTION:** Cooling too quickly and especially allowing his body temperature to become too low can cause other life-threatening medical conditions. Even if your dog appears to be recovering, take him to your veterinarian as soon as possible, he should still be examined since he may be dehydrated or have other complications.

How can heatstroke be prevented?

- Keep pets with predisposing conditions like heart disease, obesity, older age, or breathing problems cool and in the shade. Even normal activity for these pets can be harmful.
- Provide access to water at all times.
- Do not leave your pet in a hot parked car even if you're in the shade or will only be gone a short time. The temperature inside a parked car can quickly reach up to 50 degrees.
- Make sure outside dogs have access to shade.
- On a hot day, restrict exercise and don't take your dog jogging with you. Too much exercise when the weather is very hot can be dangerous.
- Wetting down your dog with cool water or allowing him to swim can help maintain a normal body temperature.

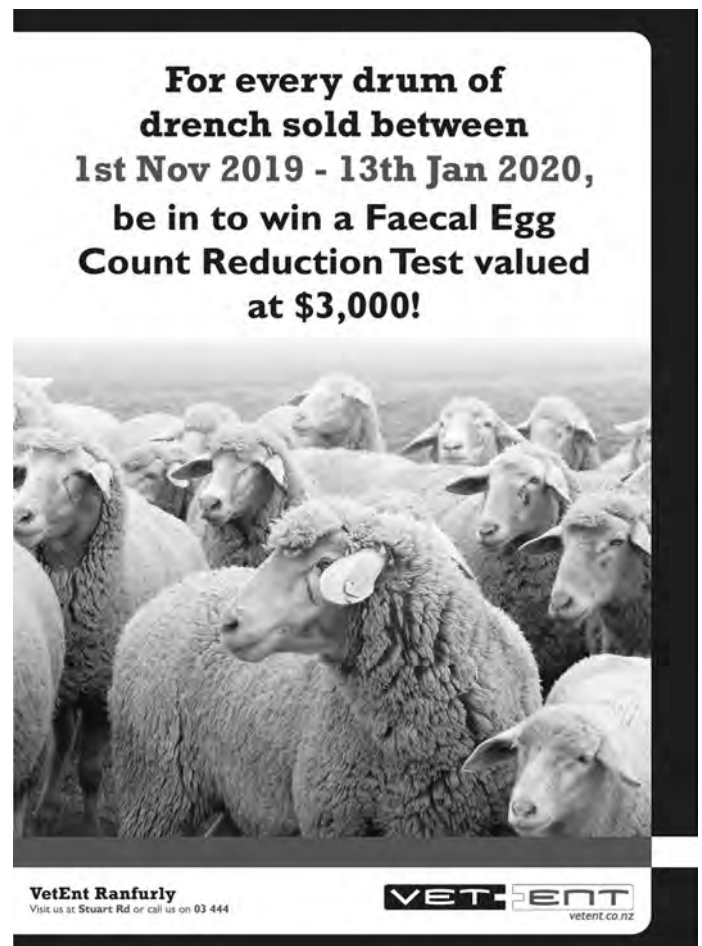


**Position Available for
an Experienced Vet
Nurse/Receptionist**

We are looking for a qualified Vet Nurse/Receptionist to join our team at VetEnt Ranfurly. This is a full time position, but hours can be flexible for the right applicant. Applicant must have a can-do attitude and be willing to help out in all aspects of the day to day running of our busy clinic.

For more information and to apply, email your CV and cover letter to natasha.kane@vetent.co.nz
Applications close Monday, 10th December.

www.vetent.co.nz **VET-ENT**



**For every drum of
drench sold between
1st Nov 2019 - 13th Jan 2020,
be in to win a Faecal Egg
Count Reduction Test valued
at \$3,000!**

VetEnt Ranfurly
Visit us at Stuart Rd or call us on 03 444

VET-ENT
vetent.co.nz

POLICE UPDATE

Constable Jaco Pieterse

It is almost the start of the holiday period and I thought it would be a good time to remind ourselves to be safe out there on the roads and around home.

Alcohol and driving

The start of the holiday period also means the end of the working year for some and with that social events like Christmas parties and work functions. A timely reminder that there should be no reason for you to drive if you think you had too much to drink.

All the licensed premises in the Maniototo area should have a courtesy coach available. If you are not sure whether you have had too much alcohol to drive, be safe and take the courtesy coach home or arrange to be picked up.

It is encouraging to see that most people are starting to realise that it is not OK to drink and then drive, although there are still a few out there who are rolling the dice.

Seatbelts

It is disappointing to see that some drivers are still choosing not to wear their seatbelts. They save lives and prevent serious injury, so please start wearing them. There will be no warnings if you get caught not wearing yours.



Speed

Every year during school holiday periods and long weekends, the speed tolerance gets lowered to 4km/h. This will again happen over the coming holiday period. Drive to the speed limit and the conditions and get there safely.

Suspicious Behaviour

During this time there is also an influx of holiday makers in the Maniototo area. Be vigilant and look out for any suspicious activity or vehicles in the area, especially if you know someone is away. Remove keys from vehicles and lock houses and out buildings.

Stay safe out there and have a great Christmas and New Year.

MANIOTOTO PAINT & HARDWARE store

*Wishing everyone a very Merry Christmas and a
safe and Happy New Year*

**Suppliers of many of your hardware needs,
Incl: cement, board material, timber and
mouldings, plumbing supplies, glass repair,
paint and much more**

7 Mitchell Street, Ranfurly, 03 444 9008

Merry Christmas to all our friends in the Maniototo

Be reassured, knowing your future is secure.

- Clear financial guidance
- Goal-based investment advice
- Second opinion review of existing investments
- Author of 'Life after Farming'

If you are approaching a turning point in your life such as retiring off the farm or selling a business, talk to **Rhodes Donald**.

Rhodes has wide experience in the financial advisory world spanning more than 30 years in investment research, consulting and training.

Contact Rhodes on 027 223 8520 or email: rhodes.donald@ph.co.nz



03 477 9923
phwealth@ph.co.nz
phwealth.co.nz

PolsonHiggs
Wealth Management

Ranfurly



Monday 23rd December 8.30am-5.00pm

Tuesday 24th December 8.30am-5.00pm

Wednesday 25th December CLOSED

Thursday 26th December CLOSED

Friday 27th December 8.30am-5.00pm

Saturday 28th December CLOSED

Sunday 29th December CLOSED

Monday 30th December 8.30am-5.00pm

Tuesday 31st December 8.30am-5.00pm

Wednesday 1st January CLOSED

Thursday 2nd January CLOSED

Friday 3rd January 8.30am-5.00pm

Saturday 4th January CLOSED

Sunday 5th January CLOSED

**By the Big
Blue Cross**



Veterinary Centre
Phone 03 444 1020

GETTING STRAIGHT TO THE POINT

Gallaway Cook Allan is a premier Otago-based full service law firm.

Contact Nathan Adams for all your Agribusiness needs:

- » Farm conveyancing;
- » Property related work including Subdivisions, Leases and Easements;
- » Succession Planning; and
- » Corporate work including syndicates.



03 474 6725

nathan.adams@gallawaycookallan.co.nz

www.gallawaycookallan.co.nz

**GALLAWAY
COOK
ALLAN**
LAWYERS

GARDEN CLUB CHRISTMAS PARTY

The Maniototo Garden Club Christmas Party on Sunday 1st December was again held in Craig Sherson and Paul O'Sullivan's beautiful Naseby garden.

Santa was on hand to distribute presents, bubbles shared and pot-luck afternoon tea was enjoyed. Strong winds drove us indoors for a while but we still managed to explore the stunning colourful grounds.

Even more special was presenting Life Membership to Judy Beck. Judy has been a valued club member since the 1980s having served in several committee roles, plus for many years was the organiser of the highly popular bus trips away.



You know you're in New Zealand when Santa wears jandals. Shirley Lowen shares her Christmas wish to the jolly fat man.



Trevor and Judy Beck receiving Judy's Garden Club Life Membership.

This was a huge job, at one stage two 40 seater buses were needed to transport the members on their travels! Judy is well-known in the club for her generosity in sharing plants, knowledge and encouragement. It was a truly well-deserved award.

Note: for those who missed out, Craig and Paul's garden will be part of the annual Garden Tour on 28th December



Viv Jones, Joanne Paterson and Wendy Kearney enjoying the Garden Club Christmas Party.

THANK YOU PAM

Many will have had the pleasure of meeting Pam Jones from Alexandra. For ten years now Pam has helped tell the stories of the Maniototo and wider Central Otago within her role with Central Otago News and The Otago Daily Times. Pam has always been passionate about telling the stories of our community and has, in that time, established a great network of



Pam Jones enjoys a cuppa at Kyeburn reflecting on her time sharing the stories and news of the Maniototo.

friendships. There wouldn't be much that Pam hasn't covered – community fundraisers, community board meetings, birthday and wedding anniversaries, big snows, big floods, events such as A&P Shows, Art Deco Festivals and Waipiata Country Ute Musters. Pam highlights the new hospital fundraising, *"I am still in awe of the community's response to fundraising for the new hospital and rest home. I intentionally supported it with as many articles as I could. Fundraising for that epitomised the Maniototo community – hard workers. I am so proud of the Maniototo for achieving that. I also enjoyed the successes of Maniototo Area School. I always kept in touch and looked at ways to share its stories too."*

Pam grew up in Alexandra, studied journalism, lived overseas in London and Portugal running a restaurant

for seven years with husband Nuno, came backwards and forwards to NZ for around ten years and returned to Alexandra in 2000. They bought a restaurant, named it Nuno's and enjoyed running that for seven years. Pam continued part-time journalism including jobs with The Southland Times and Mirror in Queenstown before filling her current role in 2009. Connections run deep with Central Otago with her Mum growing up in Hyde and her father in Roxburgh and family in Maniototo, Roxburgh, Bannockburn and Clyde.

"I've always fantasised about getting snowed in in the Maniototo on one of my trips out here for the winter stories. I've never got stuck or lost (although my car wasn't really up to it in the last big snow) but I definitely wouldn't mind getting snowed in at Dansey's Pass Hotel. It's still a plan!" Pam and her family will spend the next six months travelling back to Portugal and the UK and then who knows!

"I love Central Otago and will always keep coming back."

Steve Knowles Contracting

Tree Topping - Tree Limbing - Tree Dismantling
Full clean up service available
Specialists in farm shelter belt maintenance

7 James Street, Ettrick, RD2, Roxburgh 9572
steveknowlescontracting@gmail.com
Contact 027 237 6286

Come home to the world's freshest ideas in windows & doors

ELLISON'S ALUMINIUM CENTRAL LTD

FREEPHONE 0800 355 476

Ph (03) 445 0180, Fax (03) 445 0182

E: paul.carden@ellisonsalum.co.nz

15 Hughes Cres, Cromwell



Ellison's Aluminium have, for 30 years, been regarded as one of Central Otago's leading suppliers of aluminium joinery

We are experts when it comes time to replace or retrofit your existing windows and doors. If you are building a new home we will quote to supply and if required install as an option.

fairview
EXCEPTIONAL WINDOWE & DOORS

For inspiration and great advice, visit our recently refurbished showroom highlighted by new hardware displays, sliding and hinged door options, plus windows styles.

Contact Paul Carden 027 223 0508

OUT AND ABOUT



Katelyn Hughes, Latrell Houppapa and Kahu Houppapa out trick or treating in Ranfurly for Halloween.



Golf ladies - Rachel Duffy, Nat Blakely, Sharon Thompson, Pauling Spratt, Jude McMillan and Renee Weir at the recent Cockness Classic event.



Beautiful Bessie Pearson turned 103 in November, Happy Birthday Bessie.



Jupiter is captured by Bridgette Beckingham from Dunedin on her recent visit to the Maniototo.



Dawn Sangster won the major Mohair Classes at the Canterbury Show with her goats bred in the Maniototo.



Alan and Simon Paterson from Armidale Merino Stud of Gimmerburn - Supreme Champion Merino with fine wool at the Canterbury Show in November.



CHECKETTS MCKAY LAW
CENTRAL Otago

The Directors and Staff of Checketts McKay Law sincerely wish all our valued friends, customers and the wider Maniototo community a safe and happy Christmas and New Year holiday period.

Please note that our office in Ranfurly will be closed on from Monday 20th December and will re-open on Monday 20th of January 2020.



St John's School, Ranfurly

75th Jubilee

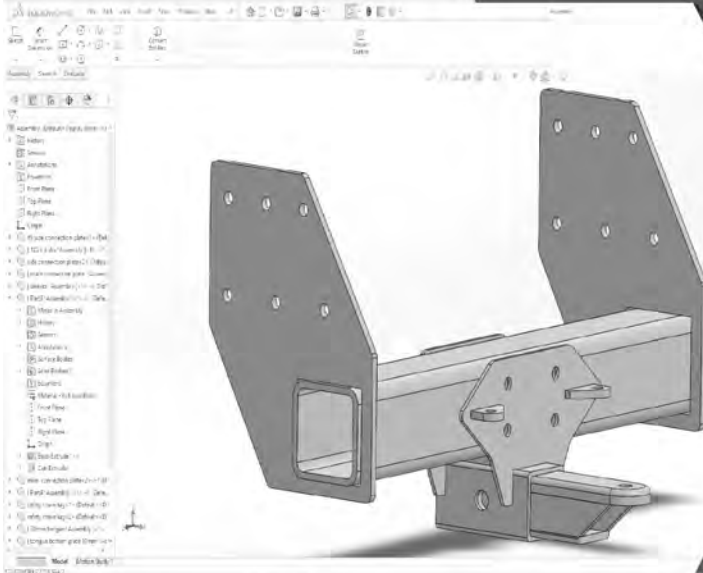
20th - 22nd March 2020

Register at: St John's School Website

www.sjr.school.nz/jubilee-2020 or contact school on (03) 4449514 or 0272661758



HEAVY VEHICLE ENGINEERING



Steve Hore
CMEngNZ, BEHons(Mech)



Steve is a Chartered Professional Engineer, and a Member of Engineering New Zealand. He has vast experience in a wide range of industries particularly Agriculture, Mining, Transport and Production Machinery.

INSPECTION

DESIGN

DRAWING

FABRICATION

CERTIFICATION

LT400 Certificates for:

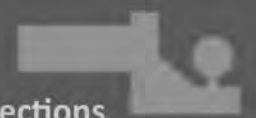
Chassis



Load Anchorages



Towing Connections



027 338 7662



www.ceneng.co.nz



66 Leask Street, Omakau, Central Otago

SWINBOURNS ON SAFARI

Marilyn and Eric moved to Naseby 13 years ago when they bought the house and Naseby Motors workshop from the Farris.

Eric was originally from Far North and Marilyn from North Otago. They met in Queenstown where Marilyn was managing a holiday park and Eric had his own engineering business, Autospeed Engineering.

They re-built part of the workshop and fitted Eric's specialist test equipment in the old lube bay and Eric (now supposedly retired) carried on his business working mainly on classic motorcycles and race cars.

"We love living in Maniototo and being part of a vibrant and caring community. We have both done stints on Naseby Vision, Eric is active in Lions and the Naseby Summer Luge, and I am current president of the Garden Club," says Marilyn.

After years of talking, plotting and planning, Marilyn and Eric headed to UK and Europe to work through "The List". The dream finally became a reality when the famous Healey Corvette race car which Eric had worked on was invited to race at the Goodwood Revival meeting near Chichester in southern England. It was a special opportunity and they were going to be part of it.

Marilyn shares with us some tales of their recent travels. Our adventure started in Edinburgh where we had some family. Based here, we visited the birthplace of my great-grandfather, Hugh Murray, who left his home near Dornoch, NE Scotland, in 1855 to settle near Milton. It was strangely moving to walk in his footsteps, and see the house (still occupied) on the remote and beautiful farm where he was born

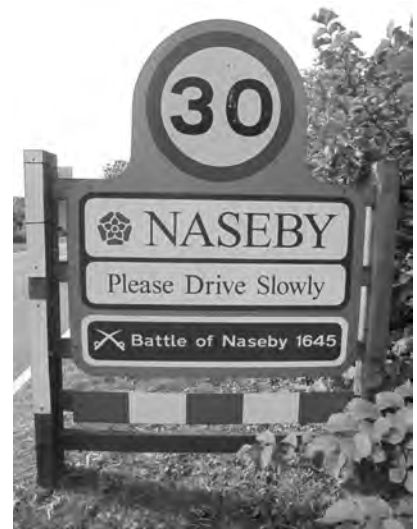
The Military Tattoo was on the list and the Edinburgh Festival was in full swing. We enjoyed catching up with Ewan Mason who was there piping in the tattoo. Canals, castles, churches, museums, gardens, distilleries and interesting engineering kept us busy for our first two weeks. We loved Scotland!

Heading west, we stopped off in Mauchline, home of Kays Curling Stone factory, and were privileged to be shown the process that gives birth to our precious stones. Heading further west, we passed through the towns of Ayr and Girvan to Stranraer before catching a ferry to Belfast. We had a week driving around Northern Ireland, staying in some delightful B & Bs, exploring this beautiful part of the world, stopping where we pleased. We did tourist things, Dunlop Memorial Garden, Giants Causeway (along with a few thousand others), a visit to the Titanic museum, a chance visit to Kirkiston motor racing track where Eric was taken for a couple of laps in the course caretaker's car. So many experiences and wonderful people. We

walked in stone circles dating back 5000 years, visited churchyards with headstones from the 1600s, saw giant slugs, NZ native trees and shrubs flourishing, and more distilleries, canals, castles and churches. We loved Northern Ireland!

Another ferry took us to the Isle of Man where the Classic TT races were starting. After a chance conversation on the ferry Eric was 'adopted' and became part of a support team for several of the top riders. He was in his element doing pit boards and being up-close to the racing. The Kiwi race secretary arranged passes for us both and we saw a lot more of the event than we ever imagined. While Eric went racing I was exploring the beautiful island using public transport of every type. We loved the Isle of Man!

On to Manchester where we picked up a rental car and a friend from NZ who travelled with us for three weeks. We had booked two nights in Naseby (the other one) but liked it so much we stayed four nights. It was an ideal base for exploring and our B & B hosts were superb. From there we visited Malvern in southern Wales, went to the



The original Naseby, the namesake of Maniototo's Town.

Morgan car factory (Eric owned one many years earlier) where these iconic cars have been hand-built since 1909. Another place on 'the list' was Ely, a picturesque city (it has a stunning cathedral) in Cambridgeshire. We own a clock manufactured there in 1863 (co-incidentally the same year gold was discovered in our Naseby) and so it was added to our list. The clock business has gone but its magnificent cathedral and surrounds were well worth a visit.

Not far away was the village of Prickwillow, home to a pump museum. It happened to be 'live' day and we were able to watch very large restored motors being fired up. It was a fascinating place to spend an afternoon. We visited nearby Market Harborough and stumbled across the local Horticultural Society Show. It could have been our own A & P pavilion with rows of perfect dahlias, gladioli, and the biggest onions and beans I have ever seen. We liked England!

From Naseby we drove to Chirk in North Wales where our canal boat 'Angharad' was waiting. After a quick lesson we figured it out and settled in to life at 4 miles an hour. Early in the trip we crossed the Chirk aqueduct,

closely followed by Chirk tunnel. Entertaining stuff for rooky skipper Eric. We managed several locks without too much drama and were kept entertained by less able operators. All good fun. My main role was to keep lookout and maintain food and beverage supplies as needed. We crossed the famous Pontcysyllte aqueduct (bridge in the sky) and chugged through beautiful countryside to the historic town of Llangollen. We liked Wales!

From Wales we headed back across England to Halstead to be nearer the race car. Here we spent four nights in a hotel dating back over 400 years, its up-and-down floors, low beams and peculiar layout testimony to its age. While the race car was getting attention, I travelled by train to London for a day's sightseeing, taking a hop-on hop-off boat ride up and down the Thames visiting too many sights to mention.

Goodwood Revival was next. It is an event like no other! Picture the biggest A & P show ever plus Field Days, add in vintage aircraft, endless entertainment and a three-day classic race car meeting and it's a pretty amazing sight. Not surprisingly, the Healey Corvette attracted a lot of attention in the pits, (partly due to its Kiwi origins) and its unique back story.



Marilyn all dressed up at Goodwood Revival.

Now six weeks into our nine- week trip we dropped our friend, and rental car, at Heathrow and headed to London for a night before catching the Eurostar to Paris. What a way to travel! Eric monitored the speed at 299kmph at one stage. We spent two days and nights sightseeing in both Paris and then Nice before heading to Italy.

After spending most of his adult life working on Italian cars and bikes Eric finally got to see where some of them come from. Highlights were visits to the Moto Guzzi factory and museum on the shores of Lake Como, and the Ducati factory in Bologna.

Food was a feature of this part of the trip! Every single meal we had was superb, and always served with flair and passion. I particularly liked that wine comes in a quarter or half litre (or more) and is both reasonably priced and pleasing to consume.

Just when we got proficient in bluffing our way in Italian we had to learn to speak German, travelling by train to Vienna where we had more things to tick off. The Spanish Riding School has fascinated me since I was very young and was a 'must see'. We both enjoyed watching a show set to music, seeing the stunning venue, and the beautifully trained and presented famous white stallions. I got to see 'Morning Work' where for two hours the public can watch the horses and riders training, being coached, having lessons and working on their routines. We went to a variety concerts featuring Austrian composers performed by members of the Royal Orchestra of Vienna in a stunning old concert hall with amazing acoustics, enjoyed the beautiful architecture everywhere, the very blue Danube, eyewatering shopping, wonderful parks and public spaces and strudel, lots of strudel.



Doing the laundry in Nice – fortunately for us, an Australian backpacker came along and helped us figure out the system.

With a late flight on our very last day, time to kill, and some clicks on our rail pass, we took trains to Eisenstadt, a historic town just over an hour from Vienna. Here we visited the stunning Esterhazy Palace, wandered the parks and gardens, and visited the birthplace of Hayden.

Just like that, after nine weeks, eight countries, five languages, thousands of photos, 45 Facebook posts (sorry friends!) it was time to head back to quiet little Naseby. We thought it would be a one-off but there was so much to see and do we might have to go back...



PATEAROA CAVALCADE 2020

Saturday 29th February "Pick Your Pace to Patearoa"



The Patearoa Host Town Committee continues its preparations to host the Otago Goldfields Heritage 28th Cavalcade in Patearoa on Saturday 29th February 2020. A small committee is working behind the scenes to host what will be a great event for Patearoa and the wider Maniototo community.

TRAILS: Entries open 1st October 2019 for OGHT members only. From the 1st of November entries are open for everyone! Book your time off work and clear all other commitments now!

Starting back in 1991 the Cavalcade was brought about to re-enact the Gold Rush era where every able bodied man left their jobs and headed for the hills in search of

gold. The trails back in 1862 were basic if at all. Accommodations were an over-hanging rock or a canvas tarp and food was damper and boiled mutton if you were lucky.

These days our focus is on that wilderness environment with the most basic of transport (foot, horse or bike) and accommodation (tents, woolshed or community hall floor space) but we have upped the ante on the food quite a few notches!

There are 12 trails for 2020 – 5 horse-riding, 2 wagon, 3 foot and 2 cycling. All trails start from different places and end in a Grand Parade, markets and entertainment at Patearoa on the 29th February.

For all information regarding the various trails check out www.cavalcade.co.nz.

If you can't make it onto a trail you should still get to Patearoa for the grand parade and day's entertainments - always great fun and well worth while! If you are interested in having a stall at the market day, please contact the Host Committee on patearoacavalcade@gmail.com, or Cate Herlihy on 021 977 217.

If you are interested in sponsoring or supporting the event in any way, we would love to hear from you at patearoacavalcade@gmail.com. Please join our Facebook page for all the latest updates; Patearoa Cavalcade 2020.

Maniototo, Hear for the Holidays

Make sure you're hearing every part of the holiday celebrations. Visit your local audiologist, **Alice Lindeman**, today so you have your best hearing when it matters most - every time.

It's not too early to book your holiday hearing appointment!



Call (03) 448 5185

123 Centennial Ave, Alexandra
Ranfurly Medical Centre, Ranfurly
Twizel Medical Centre, Twizel



 **ALICE LINDEMAN**
hearing
Proudly 100% kiwi owned and operated

BURN UPDATE

Denise Baddock

It's clicked into the first couple of days in December as I put this report together, how time has flown. Firstly a huge thank you to Steve, Dean, Amanda, Carol, Lynley and Maia whom have stepped up to the plate in recent weeks and filled the roster for on air shifts, dealt with the emails, phone calls etc on my behalf in my absence since a recent health glitch which took me out of circulation for three weeks. I certainly appreciated their time, effort and dedication to keep us on the airwaves. I am now back on deck and it was lovely to see I was missed!

The **Burn Tailing Shout** which was kindly sponsored by Linda at the Ranfurly Supermarket was once again popular among the tailing gangs and farmers throughout the Maniototo for 2019. It was great to see new names added to the six weekly draw and congratulations to the winners who picked up a prize each week, I hope they enjoyed a bevvie or two after a busy week in the yards.

Don't forget '**Santa's Grotto**' coming up in conjunction with the **late night shopping night** on Thursday 12th December, being held at the Maniototo St John rooms in Northland Street, from 3:30pm to 5pm, single, group and family photos with Santa for 2019 will be \$10 per family. Pop along on the day and see 'Santa', a small gift per child will be given on the day.

Pop on your 2020 calendar the '**Burn Pool Party**' on Saturday 11th January from 2- 4pm at the Ranfurly Pool in John Street Ranfurly, there will be games, races, music and giveaways, pop along for a fun filled couple of hours. Normal pool admission applies for those attending the party.

For all your advertising requirements keep us in mind to spread the word, competitive prices and advertising packages are tailored to suit your needs for 'on air' content and media print. We have a great following via social media on our 'Burn' face book page, and are happy to post your appropriate notices via this format.



Burn729am/87.9fm burn729am@gmail.co.nz
444 9729 / 027 287 6729

Positively Maniototo PositivelyManiototo@gmail.com
027 264 3766

Remember to 'like' our Facebook page 'Maniototos Burn' to get event updates and road conditions.

Your Community Based Radio

Keeping it 'Live & Local' Throughout the Maniototo

*Merry Christmas and a Happy
New Year from Martin,
Michelle and the team at
Maniototo Four Square*

Maniototo Four Square
Open 7 Days
(Closed Christmas Day)
03 444 9021

**Kay and Stephen Dunn
Travel Brokers**

VINCENT GEORGE TRAVEL
For personal and professional travel advice where and when you need it

Maniototo

Join Stephen and Kay for their monthly travel
talk on BURN 729AM/87.9FM

Wednesday 18 December - 10:15am

**Thank you for your support during 2019.
We wish you and your families a safe and
Happy Christmas and New Year.**

Ph: 444 9132 or 027 522 2389 or 021 100 6718

travel managers kayd@travelmanagers.co.nz or stephend@travelmanagers.co.nz IATA Accredited Agent

Approved Travel Broker of Travel Managers Group Ltd
Registered Office: Level 7, 2 Emily Place, Auckland, NZ

MCER

**Mining &
Construction
Equipment
Repairs Ltd**



Heavy equipment repairs & servicing
Component overhauls
Hydraulic Repairs
Electrical repairs
Mobile welding

Phone: Paul Bain 027 253 1137, 03 489 7317
or mcrepairs@xtra.co.nz

Workshop: C/o Hyslop Rural, 28 Bell Street,
Outram

THE HILLS ARE ALIVE

Over the last few weeks, the southern ranges of the Maniototo were crawling with walkers, runners, bike riders, motorbikes and horse riders.

Firstly came the National Rogaining Championships at En Hakkore where Rogaine endurance events ran over 3, 12 and 24 hours. Competitors strategically plan a route around different markers on a map to gain the most points within the chosen time frame. In the 24 hour event competitors will stop for a meal during the night (which was kindly donated by members of the local Rogain team and friends) or will sleep. Accommodation was provided by En Hakkore and tent sites were also available. Organiser Terry Davis couldn't praise the local landowners enough for their kindness in allowing access for the event.

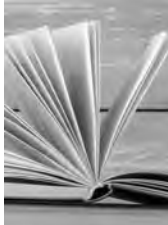


Highland Events Co-ordinator Terry Davis with Women's Veteran 3 Hour Rogaine winners Sarah Smith, Katrina Suddaby and Heather Dowling at En Hakkore over the weekend of the 23rd and 24th of November.

Then, a couple of weeks later, Patearoa Station was host to Central Otago Hunt Club fundraiser Treks and Trails Weekend. There was the option of trekking, motor biking, mountain biking and horse riding a variety of marked trails. There was live music at night and free camping available. Reports are of a wonderful weekend!



Horses and riders on the Central Otago Hunt Treks and Trails Weekend on Patearoa Station.



MANIOTOTO LIBRARY BOOK CHAT


DO YOU LOVE TALKING ABOUT BOOKS YOU'VE READ? JOIN US FOR A FRIENDLY CHAT ABOUT WHAT YOU HAVE BEEN READING.

SWAP IDEAS FOR YOUR NEXT BOOK, MEET NEW PEOPLE AND ENJOY A RELAXING HOUR AT YOUR LOCAL LIBRARY!

**TUESDAY 12TH NOVEMBER
1.30-2.30PM**

**TUESDAY 10TH DECEMBER
1.30-2.30PM**

TEA AND COFFEE WILL BE PROVIDED.
NO BOOKINGS NECESSARY.



Maniototo Library
 Ph: (03) 444 9348 Eml: maniototo.library@codc.govt.nz 15 Caulfield St, Ranfurly 9332



RuralPlumbing & Roofing Ltd

Looking for a company that can provide quality service in a timely manner, no matter how big or small the job? Give Rural Plumbing and Roofing a call.

- **Plumbing and Roofing Maintenance**
- **Fire Installation**
- **Drainage Maintenance**
- **Septic Design and Repairs**
- **New Homes**

All quotes are guaranteed within 7 working days of contact.
First 50 clients receive a 10% discount on labour*

Corry Walker
 Registered Plumber
 Registered Drainlayer
 Roofer
 P 027 488 6601
 e ruralplumb@gmail.com

*Discount only applicable with presentation of flyer

The background of the advertisement is a large black and white photograph of an indoor swimming pool. Several people are swimming and playing in the water. In the foreground, two large inflatable rings are visible. The pool has a high ceiling with a metal frame and a clock on the wall. Two circular inset images are on the right: the top one shows a group of people in the pool, and the bottom one shows the exterior of the pool building with a covered entrance.

RANFURLY POOL

OPENS

SATURDAY 30 NOVEMBER 2019

PUBLIC SESSIONS

Monday - Friday	3.00pm - 8.00pm
Weekends & School Holidays	1.30pm - 8.00pm
24 December (Christmas Eve)	1.30pm - 3.00pm
25 December (Christmas Day)	Pool Closed
Burn 729 Pool Party - 11 January 2020	2.00pm to 4.00pm *normal admission applies

Season Passes and Swim Cards will be available at the Ranfurly Service Centre from **Monday 25 November 2019**.

Enquiries welcome for morning Lap Training and Aqua Club sessions.

Ranfurly Service Centre: 03 444 9170 - 15 Pery St Ranfurly

ANCIENT CONNECTIONS

It seemed so sad that, as we go to print, we are processing the news that the beloved Ancient Briton Hotel in Naseby has suffered a terrible fire. The AB is and was 'home' to many characters who will have experienced many of the memories on the walls of this Naseby icon built in 1863.

One of those characters we mention is the one and only 'Blue Jeans'.



The Maniototo farewelled this poetic, country legend in November. Naseby poet, Ross McMillan (88) was a musterer and farmer who

used poetry to tell tales of people, places and, especially, his love of the high country. Ross was a local highlight at the Bards, Ballads and Bulldust festivals and made his name as a "bush poet". Known far and wide as 'Blue Jeans' because, obviously he would always be wearing his standard apparel of blue denim jeans and a cowboy hat.



Ross McMillan with his son Pete.

Ross will be widely missed as an icon of the area who was a feature in many a television and news broadcast and media articles.

"It was always a pleasure to watch the way he enriched people visiting the area, to see them learn about Blue Jeans and his poetry, his knowledge of high country farming and way of life, he was a lovely gentle man and will be truly missed," says the team at the Ancient Briton Hotel.

Ed: *The people of the Maniototo are thinking of you Jan and Adrian and team and we hear a real true community effort is going on to assist in a move to The Royal.*

RayWhite

Local People, Selling Local Property

Curious to see what your property is worth?
Get in touch.

Bev Helm
027 301 0477
bev.helm@raywhite.com
rwdunedin.co.nz
Proven Realty Ltd Licensed (REAA 2008)

GETTING STRAIGHT TO THE POINT

Gallaway Cook Allan is a premier Otago-based full service law firm.

Contact Devon Miller for all your Private Client needs:

- » Wills and Enduring Powers of Attorney;
- » Estate Administration;
- » Relationship Property; and
- » Trusts and Asset Protection.

03 474 9790
devon.miller@gallawaycookallan.co.nz
www.gallawaycookallan.co.nz

GALLAWAY COOK ALLAN LAWYERS

A new era of **broadband service for Central Otago** has arrived...

Unifone's construction program is well underway and parts of the Maniototo are already able to connect to our fast, reliable and affordable internet services.

Your wait for fast, reliable broadband is almost over. Unifone's WiFi Broadband service is currently being rolled out across Central Otago, including the Maniototo. Our team of technicians are working to construct a network of modern, high speed radio transmitters that will bring high quality, cost effective broadband to you.

Have a look online at which plan might suit you or give us a call. We have plans for people with simple internet needs, right through to plans that will suit the most demanding of power users. Best of all, our plans come with unlimited data. When you are with Unifone, data caps become a thing of the past.

We own the broadband infrastructure we use to deliver service which means we can be more innovative, flexible and adaptable when providing you with a connection. We can even help with phone lines, broadband and data networking around your farm or business or linking your business to just about anywhere you can imagine.

We're not a 'one size fits all company' and we think you'll like that.



unifone.net.nz

0800 894 114

GREIG'S GORGEOUS GLASS

Local artist Julie Greig has been collaborating on a long-term project for the Whanganui District Council with Whanganui glass artist Greg Hall – for about 13 years.

During 2006, the Whanganui mayor at that time, Mayor Michael Laws visited a shire (county) in Australia which had stained glass windows illustrating the history of the area and realised how perfect that would be in the Whanganui Council Chambers; which are circular, lined with rimu panelling, topped with 32 panes of glass. He approached Julie and Greg Hall to create the windows and a possible list of content was set. At the time Julie was living in Whanganui.



Each window is sponsored by a group or individual, which in recent years, has steered the subject of the windows. So far, over 13 years, 22 have been completed. The subjects for each include portraits of Mother Mary Aubert, Sir John Balance, Sir Arthur Porritt, Billy Webb and Peter Snell, the new bridge at Mangamahu, eel traps used on the river, the river boat Waimarie, early settlers arriving by boat, Kowhai Park, the shark megalodon (remains found near Pipiriki, it would have been as large as a double decker bus!), the Memorial tower, and many others. Visits to view the windows are very popular.

Once a window is sponsored, Julie researches images to work from, often there are none depending on the time of the subject, she then creates a pencil design, when this is approved a colour design is painted at 50% window size. Next she draws up a full size pattern for the glass artist Greg Hall to work from and sends all this up to him in Whanganui. He modifies the design to suit a good structure and collects coloured glass to suit the artwork. This is becoming more difficult as many stained glass suppliers overseas and within NZ have closed. When the glass is cut Julie travels to Whanganui to paint the detail or portraits directly on the glass over a lightbox. These pieces are fired in a kiln to bond the paint to the glass. From there Greg uses lead and solder to join the many pieces and build the window which is eventually installed in Council Chambers. Each panel

tells a story and is a part of the history of the making of Whanganui. It is hoped to complete the project over the next 3-4 years.



Julie is planning to teach soft pastel and oil painting through the Maniototo Arts Council in 2020, please contact Amie Pont to register your interest. There may be a weekly evening class during terms and the occasional weekend workshop.

Julie's original paintings can be viewed on her website www.juliegreig.co.nz, Facebook [juliegreigartist](https://www.facebook.com/juliegreigartist) or the Eade Gallery in Clyde, Otautau Gallery, The Artists Room Gallery of Fine Art in Dunedin or The Queenstown Gallery of Fine Art. Follow her on Facebook to see her paintings as they come off the easel.

The Ashdene 'Working the Land' set of placemats, coasters, mugs and trays released by Ladelle in Australia are now available at some gift stores and the Saddlery Warehouse throughout NZ. Keep an eye out for them at More Than Books.

Julie and her husband Jan moved from Burkes Pass to their homestead outside Patearoa last summer.

**Call now for your
FREE in-home
style consultation,
measure and quote**



**Call your local style consultant,
Sharyn Scott 027 776 6533**

**0800 808 300
russellscurtains.co.nz**

Russells
The curtain & blind specialists

MANIOTOTO ST JOHN UPDATE

Due to unforeseen circumstances, beyond control, a full comprehensive update regarding St Johns will be in the 2020 February edition of 'PM' where we will catch you up with the Youth & Penguin' Service awards, community initiatives, Christmas and New Year happenings and latest updates. A quick note, it's great to see the MHS Ltd, Heli pad in commission (below), which will make those all important medical and ACC transfers easier for our Ambulance crews, Prime, Doctor and MHS Ltd medical staff easier. It's first transfer happened last month.



St John



HEALTH HUB

The new Maniototo Health Community Hub (with parking access off Pery Street behind the new hospital) is now open and includes Ranfurly Medical Centre, Central Dental, LMC and Well Child Services, X Ray, Massage Therapy, Strengthening Families, Plunket Mothers and visiting clinics which is fabulous!

Maniototo Health Services Ltd AGM in the Dining Room of the Hospital on the 11th of December at 7.30 p.m.



Aotea Electric has an electrician based in the Maniototo providing all manner of servicing, repairs and maintenance to the Manuherikia and Maniototo areas. If you need a local electrician, please call and we'll look after you, without the long delays or huge travel costs. We can fix your appliances, connect your water pump, install your heat pump, wire your shed or anything else you might have. Coupled with our Alexandra based contracting department for bigger jobs, we can cover any electrical job you might have.

**Call Dale on 027 200 1970 or
dale.bradly@aoteaelectric.co.nz**

RANFURLY LATE NIGHT SHOPPING

**SPECIAL DEALS
FESTIVE TREATS
CHRISTMAS CHEER**

**Thursday 12 December
5.00pm - 8.00pm**

HAMPER PRIZE DRAW

Every purchase made in participating stores puts you into the draw for one of two hampers. Hampers can be viewed at Maniototo Paint and Hardware and Janyne Fletcher Photographer. A big thank you to these businesses for supporting the hamper draw.

Challenge Ranfurly
C J Sinclair Ltd - Auto Super Shoppes
E-Central Cafe
Farmlands Ranfurly
Graham Electrical
Janyne Fletcher Photographer
Hayes Engineering Works
Local Lassies Pop Up Shop
Maniototo Cafe
Maniototo Four Square
Maniototo Paint and Hardware
Maniototo Pharmacy
More than Books
Off The Rails
Old Bank Pop Up Shop
PGG Wrightson
Ranfurly Site
Ranfurly Supermarket
Shane Turfus PGG
The Hair Studio

THANK YOU FOR SHOPPING LOCAL



Focus on your future
11 Charlemont Street, Ranfurly, Central Otago
Tel: (03) 444 9158, enquiries@iclca.co.nz, www.iclca.co.nz



Dry Hire 1.5 Tonne Digger
\$40.00 an hour (GST minimum 2 hours per day)
price negotiable for long term hire

With Auger
\$45.00 an hour (GST minimum 2 hours per day)

Courtney 027 367 4954

COUNCIL CORNER



Positively Maniototo caught up with your Maniototo representative on the Central Otago District Council, Stu Duncan following the recent elections.

"We have a relatively new council with four new councillors, all young and vibrant, keen to get going which is good to see. An election means councillors

and board members' portfolios will change. Our board members will find out their portfolios at their next meeting in the New Year. Maniototo had a good voter turnout in the local community (nearly 600) which is great.

A large project is the new Clyde water system so Maniototo people can expect roadworks in Alexandra and surrounds when you head over that way.

I also attended an affordable housing workshop in November which mainly covered Cromwell but, even in the Maniototo, rentals continue to be in high demand."

Project Maniototo was unaware that Central Otago District (Council) contribute towards the Otago/Southland Film Industry budget. A Production Scout is funded by ratepayers.

"That work is paying off," says Stu. "They're scouting further out from Queenstown now. The Jane Campion film was supposed to be filmed in Montana but is being filmed

here and accommodation in the Maniototo is in huge demand. The film industry leaves a lot of money behind which is great. There's a call out for 'extras' etc which are paid roles. It's a great local employment opportunity."

The Central Otago District Council was also rocked with the news of the passing of Property and Facilities Manager Mike Kerr. "Mike was instrumental in the rugby club and hospital lease negotiations etc. There is a deep sadness within the CODC team and there's a huge gap to fill.

We have a relatively new Mayor and Chief Executive and now a new Property and Facilities Manager so it is interesting times ahead for Council."

Ed: Here's a little about the role of the Maniototo Community Board and the 'portfolios' they are allocated:

- Design and Location of the Sun for the Interplanetary Cycle Trail Working Group – 1 representative
- Maniototo Community Arts Council – 1 representative
- Maniototo Ice Rink Committee – 1 representative
- Maniototo Promotions Group – 1 representative
- Patearoa Water Scheme Liaison Committee – 1 representative

A liaison appointment will require an elected member to keep in contact with the organisation and attend meetings.



Fertilizer New Zealand Ltd

Fertilizer New Zealand is a wholly New Zealand owned independent company specialising in quality, cost effective fertiliser. We offer New Zealand farmers a complete solid and foliar fertiliser programme.



To talk to our fertiliser experts call 0800 337 869
To find out more visit www.fertnz.co.nz

INSURANCE BROKERS ALLIANCE LTD

Who are we?
 We are a locally controlled and operated insurance broking company
Phone: 03 477 7321

FARM INSURANCE, VEHICLES, HOME AND CONTENTS
 With over 20 years in the Industry, we can help. Call us for advice.



Sue Williams
Registered Financial Adviser FSP116012
021 712 606
suel@ibal.co.nz



Tim Moore
Registered Financial Adviser FSP383966
027 555 8797
tim.moore@ibal.co.nz

**Our point of difference is 'SERVICE',
 Our ethos is 'TEAM'**

FILM FRIENDLY CENTRAL

Central Otago officially became a 'Film Friendly District' in February 2008. Film Friendly status is formal recognition by Film NZ that Central Otago has the necessary processes and policies in place to meet screen production industry needs as they arise.

This means that the Central Otago District Council can work with film production companies as a one stop shop to address most of the concerns that they might have. This is not limited to consents and permits, but extends to helping with locations, accommodation and local support services.

CODC also encourage green screen principles during any projects.

Still under the shroud of secrecy, the movie set to be filmed in the Maniototo and surrounds in 2020 has already has a positive effect on the area. Nic (South Island Production Co-ordinator) and Mandy (Publicity) say, *"We have been absolutely blown away by the support and generosity of the people in the Maniototo Valley to help us secure accommodation for 200 people in the area. The people we have met in the community have been beyond helpful in locating property owners, offering up their own homes and making this very daunting task become achievable. We look forward to settling in early next year and our gratitude is everlasting for making it all possible! Many, many thanks."*

Anyone interested in casual work or other opportunities can call 022 108 8619.



JOIN US ON A 'LIVE'
OPERATING DAY IN 2020
5 January | 2 February | 1 March | 5 April

Marvel at a fully operational turn of the 20th century engineering workshop and 1920s villa... and discover how genuine kiwi ingenuity and resourcefulness led to a remarkable home-grown industrial design that is still in use today!

Rewire on a Hayes Roast Coffee, enjoy our café delights and gift shop.



03 444 5801
39 Hayes Rd, Otarehua, Ida Valley
www.hayesengineering.co.nz

Vetlife
Animal Health Partners

Vetlife Ranfurly

Vetlife Ranfurly service a large range of clients throughout the Maniototo area.

Our locally based vet and technician are always available to help with your production, lifestyle or companion animal health requirements. Pop in for a chat or give us a call on 03 444 9700 to see how we can help you and your animals.



8 Northland Street Ranfurly



PGG Wrightson Real Estate

Keeping it local.



Shane Turfus

Shane joins us in our Ranfurly Store as our local Real Estate Licensee specialising in residential and lifestyle sales in Naseby, Ranfurly and surrounds. For a confidential chat visit Shane at our Ranfurly office or call him on 021 246 6383.

www.pggwre.co.nz

PGG Wrightson Real Estate Limited, licensed under the REAA 2008

Helping grow the country

LOCAL KINDERGARTEN

20 Hours free for 2 year olds at Maniototo's only kindergarten. Maniototo parents looking for a great educational start for their two to five year old can get 20 hours free per week, regardless of age.

The kindergarten opened in 2012 thanks to the efforts of hard-working parents and volunteers, and is the longest standing early childhood education facility in the town. Like all kindergartens, it has close ties to the local school, helping smooth the transition from preschool to primary.

It is part of the not-for-profit Kidsfirst network of 80 South Island services, which means that even two year olds can receive 20 hours free of fees each week (there are some conditions - ask Head Teacher, Deb, or check out kidsfirst.org.nz/fees).

There are other benefits to being part of Kidsfirst: teachers get access to strong ongoing professional development, the kindergarten receives administrative support, and many of the issues smaller kindergarten associations face are no longer a concern. The incredible work of the original establishment committee and ongoing support from local families and businesses, means the kindergarten is very well resourced.

Kidsfirst Maniototo operates under the kindergarten philosophy, which has been running in New Zealand for more than 100 years, and focuses on learning through play, engagement with nature, community connection, small group sizes, and a bicultural approach.

"It is an approach that has lasted for a reason," says Kidsfirst Maniototo Head Teacher, Deb McNally. "Kindergarten does a fantastic job of preparing children for school and life, while letting them learn at their own pace, through their own interests, in their own way. The word 'kindergarten' is so strongly known, people often confuse it with other forms of early childhood education - but it very much has its own approach, and children respond to it very well."

Deb started teaching at Kidsfirst Maniototo in 2015, joining an already established team, providing a stable base for children and families.

"It's lovely to see many of our former kindergarten children enjoying success at school and in the community. There's a real sense of pride in knowing they've had the very best start we can give them, and that their experience here has encouraged a lifelong love of learning."

Kidsfirst Maniototo operates from 9am to 3pm, similar to school hours and mirroring term breaks.

"The full days mean that children have more opportunities for learning and fun, and can form closer friendships with others they see every day. Term breaks give families and children the opportunity for a change of pace."

The kindergarten has spaces available - give Deb a call on 03 444 931 or drop in for more information. A warm welcome is assured at any time.

Kidsfirst Kindergartens Maniototo
Nga Tamariki ki Mua o Maniototo
28 Welles Street, Ranfurly 9332

Ahakoā he iti, he pounamu
Although it is small, it is precious



**FREE
FOR 20
HOURS EACH WEEK**
for all children 2 years and over*

*some conditions apply

MANIOTOTO

**Enrol maniototo@kidsfirst.org.nz
drop in 28 Welles St, Ranfurly
or phone 03 444 9310**



**Rail Trail
Massage**

Not Just for Rail Trailers!
Local Massage
Appointments available!
Blair Jones
021 201 6861
blair@railtrailmassage.com
www.railtrailmassage.com

• Relaxation • Deep tissue • Sports • Trigger Point therapy



RANFURLY BALEAGE AG LTD
☎ DEAN 0278059812
✉ dcagballage@gmail.com

BALEAGE + ALL GROUND WORK

YOUTH GO GLOBAL

Janyne Fletcher

The Maniototo International Curling rink is a hive of activity as a number of youth teams prepare to compete offshore. The first team to leave our shores will be the NZ Women's Under 21 team who will be competing in Finland at the World Junior B Championships from 11 December. Soon after the Christmas break, a mixed team of young curlers will be heading to Switzerland for the 2020 Winter Youth Olympics on 9 January. Following their breakthrough win and Gold Medal in Finland last year, the Under 21 Men's team will take the stage at Krasnoyarsk, Russia on 15 to 22 February for the World Men's Junior Championships.



New Zealand Women's U21 team: Rachel Pitts (Dunedin), Zoe Harman, Courtney Smith, Grace Apuwai-Bishop (Dunedin) and Lucy Neilson.

First to leave the country is the Women's Under 21 team skippered by Courtney Smith to compete in the World Junior B Championships. Courtney has plenty of international experience and will be leading a new young team made up of Lucy Neilson (Ranfurly), Zoe Harman (Ranfurly), Grace Apuwai-Bishop (Dunedin) with Rachael Pitts of Dunedin completing the lineup as alternate. Courtney says *"what our team lacks in international experience, they make up for in sheer enthusiasm and love of curling. We hope to give a few teams a bit of a shake up, have an enjoyable tournament and learn from this amazing opportunity"*.

The curling team for the Lausanne 2020 Winter Youth Olympic Games has recently been announced and the athletes all hail from the Maniototo Area. Lucy Neilson, Zoe Harman and Will Becker attend Maniototo Area School, while Hunter Walker recently graduated from Otago Boys. The team will compete at the Games from January 9th to 22nd in the Palladium de Champéry, Switzerland.

Captain Hunter Walker says he's thrilled to be selected and loves the strategy involved in the sport. *"It's very physical so you've got to be really fit to play which is part of the fun. It's also great to compete internationally and make friendships all over the world."* Team coach Nelson Ede says a huge number of local youths are involved in

curling thanks to the accessibility of the Naseby Indoor Curling Rink. *"The kids get right in behind it. They see their peers doing well and see the opportunities the sport has to offer and think I'd like to have a go at that."*

During the first week of the Games the four athletes will compete as the New Zealand Team. Following that competition, each individual athlete will be paired with an athlete of the opposite sex from another nation as part of the Mixed Doubles Event which will be contested during the second week of the Games. Rachael Pitts and Jayden Bishop from Dunedin have been selected as non-travelling reserves.

Last year the New Zealand's Junior Men's Curling side achieved their major goal at their first-ever World Championship and finished in sixth place overall, allowing them to automatically re-qualify for this year's World Junior Championships in Krasnoyarsk Russia. This was by far the best result for any New Zealand Junior side and could herald a step change for New Zealand curling.

NZ Men's Under 21 skip Matt Neilson is upbeat about the chances for his all-Otago team of Neilson, Anton Hood, Ben Smith, Hunter Walker, and Jayden Apuwai-Bishop. *"We're definitely going to be stronger for this coming tournament. We will have had a full year of training and we're really looking forward to it. Our goal is to stay at the Worlds for next few years to come and prove to ourselves that we are capable of things we thought were impossible."*

Women's skip Courtney Smith goes on to say that all of our youth teams are humbled by all the support they have had over the last few months. On behalf of all of the youth teams she wanted to thank the teams that practise with us, locals who have helped with fundraising efforts, the staff at the Curling Rink, the New Zealand Curling Association and the World Curling Association. *"We can't wait to get out there and meet other international teams, compete strongly and have amazing experiences."*

Jacqui Dean MP for Waitaki

I'd like to wish each and every one of you a wonderful holiday season. Travel safely and enjoy the company of those you care about. The electorate office will be closed over the Christmas period and will re-open in mid-January.

127 Thames St, Oamaru 9400
03 434 7325 - 0800 MP WAITAKI
Waitaki.mp@parliament.govt.nz
jacquidean.co.nz

National 

Authorised by Jacqui Dean MP,
Parliament Buildings, Wellington.



BECKS ON BALANCE



Becks Smith speaks at the Agri-Women's Development Trust (AWDT) event.

Can you tell us where you're originally from, what brought you here and what keeps you here?

Born in Hamilton, spent primary school years in Papua New Guinea and secondary school in Dunedin. Came here to start work as a new graduate vet with the amazing crew at Central Vets and I love the job, the landscape, and the people so much that this is my home now! Oh that...and I found a pretty neat farmer to marry who lives here!

How have you grown personally and professionally as a member of a rural community?

Being a member of a rural community has been pivotal to my growth. The Maniototo Community is so supportive and really embraces people following their passions. There is a really strong culture in the women around here to look after yourself, look after others, care for the environment and care for your families. It's really beautiful. This helps me grow personally having this energy around me, and professionally as I know that people in my community may not always understand what I do, but they always support me. Also, this community has offered me some of my earlier leadership opportunities (eg. Maniototo Young Farmers Secretary & President, Maniototo Plunket Group President) that have been stepping stones into this pathway I have chosen to follow.

How did you find out about AWDT?

In 2016 I was Facebook scrolling and I noticed this ad kept popping up for the Understanding Your Farming Business Course. At this point in time Jason and I were getting more involved in the family farm, and I was working part-time as I had our first daughter Milie, so I signed up for the 2017 course in Middlemarch. I instantly fell in love with the Agri-Women's Development Trust (AWDT); the passion the facilitators showed, the quality of content in the course and the continued contact they provide after the course

finished. I was sceptical at first of a "women's only club" as I have always worked in a male-dominated environment, however women do face unique challenges in rural environments, rural life and also have a different way of thinking which presents a unique opportunity to be harnessed. The AWDT does a wonderful job of addressing these challenges and opportunities and embracing diversity within New Zealand's primary industry.

Did you do First Steps? What did you take away from that?

Yes, I did First Steps (now called It's All About You) in Ranfurly in 2018. This was a life-changing course for me, it's a really deep dive into self-reflection and taking time to explore your own values, strengths and passions. Living such busy lives, with farms, family and community commitments I find we don't often spend enough time finding out who we really are and what impact we want to make on the world. This course continued to fuel my faith in what the AWDT was delivering and I knew at this point that Escalator was on the bucket list.

What made you decide to take the Escalator Course?

I had Escalator on my radar after the 'It's All About You' course. I applied for the 2018 Escalator course just after the birth of, Emerson, our second child, but thank goodness the selection panel could appreciate that it wasn't quite the right time for me. Then in 2018 I secured a role as a Veterinary Enterprises Group Ltd Board Observer and as part of that role was required to do some governance professional development. I knew the Escalator course had a module on Governance, Strategy & Finance, so it was like the stars had aligned. I worked really hard on my application and got feedback from a few local Escalator Alumni I knew and managed to make the cut – one of 15 women out of 80+ applicants.

What other professional development work do you do?

I have a learner's mindset, I love learning new things! So pretty much anything and everything. From a technical point of view I have done the Zoetis Veterinary Advisor Series and carried on to train as a StockCare advisor, I have completed the Intermediate Sustainable Nutrient Management course through Massey University, have trained in Orthopaedic surgery, up to referral surgery level, and attend the New Zealand Veterinary Associations Sheep & Beef Vet's Conference every year. From a leadership point of view I have done a 'Lifting Your Leadership' course through The Learning Wave, and hope to continue in this space having now done Escalator.

You travel a lot for work - how do you balance that with family life?

It's a juggle! I am so lucky to have a super supportive village around me who all make it possible. Between Jason, our parents, childcare facilities and our community of friends and family we make it work – the kids are really versatile and are also really lucky to be able to spend so much time out on the farm with their Dad. I do tend to travel at silly times so that I can still be there for dinner/bedtime as much as possible. Travelling on planes and downtime in airports is also a great time for life admin that I would normally be doing at home eg. paying bills, catching up on extra paperwork, making phone calls and weekly planning.

What would you say to other women out there thinking about undertaking AWDT courses?

Do it! I cannot recommend them highly enough, everything I have experienced from the Trust thus far has been fantastic, and the networks you will create are incredible.

Also, what would you say to women out there balancing 'life' and work...

Work is part of your life, one mistake I made early on was trying to compartmentalise everything. I failed at this, burnt out and just became an absolute stress-head. I also felt like I being spread too thin and no one was getting the best version of me. Everything I do, or want to do, is for a reason so the best advice I can offer is find out what your personal values and goals are and make sure everything in your life fits in with these. Don't be afraid to say no to opportunities or "obligations" if they don't align with your values. Just do you! If anyone has more questions about work/life balance I highly encourage you to do the AWDT It's All About You course, this will give you all the tips and tricks you need to get started on the journey.

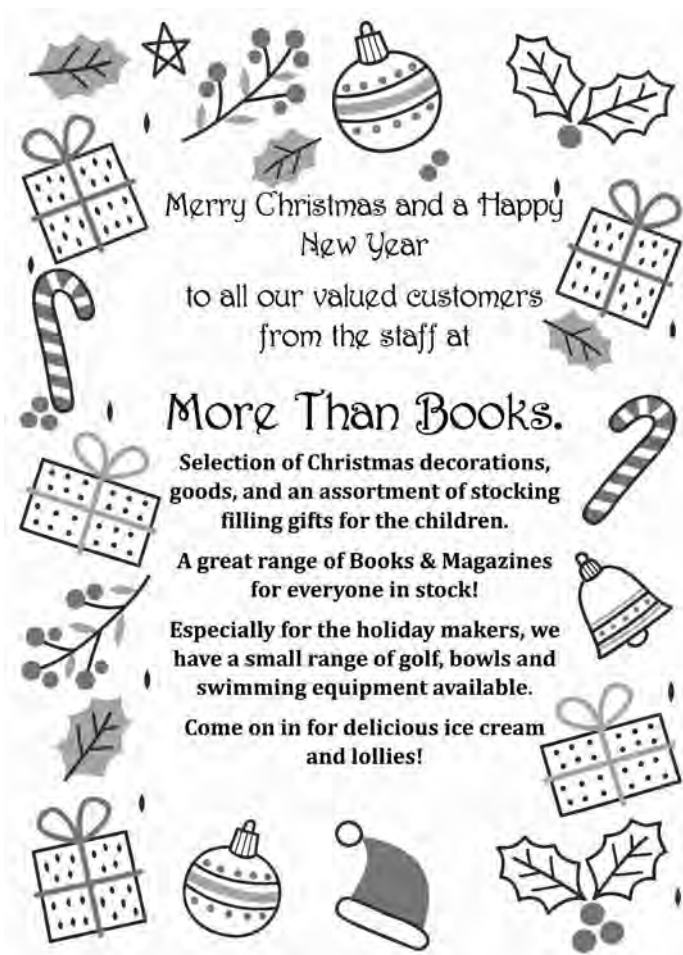
And remember, it's a journey, I'm definitely not there yet, but *"Do the best you can until you know better, and when you know better, do better!"*

The Hair Studio

Becky and the team at The Hair Studio would like to thank you for all the ongoing local support and wish everyone a safe and happy break.

I'm closed from Sunday 22nd December until Tuesday 7th January

We are looking forward to another amazing year ahead.



PIGBURN GORGE CONTRACTING

Available to provide a complete service from standing to covered in the pit.



- Chopper
- Mowing, twin conditioners
- 4 rotor rake
- Tractor and trailer
- Truck and bin
- Digger on pit
- Cover and install
- Dry powder inoculant
- Whole crop front

Also available

- Variable chamber round bailer
- Individual wrapper
- Carting and stacking
- 14tonne gravel tip trailer
- Twin rotor rake

Mike and Jenny Newth

027 345 1462

With the experience that 12 years making silage in the Maniototo brings, we are excited to be independent and able to offer options that work in with you, for your winter feed

Alpine Wellness Clinic

Hocatt Ozone-Oxygen Therapy

- Full body detoxification
- Balances immune function
- Increases white blood cell count
- Prevents/reverses degenerative diseases
- Purifies the blood and lymph system
- Boosts energy
- Improves digestion
- Assists weight loss (burns 600 calories per session)
- Eliminates auto-immune diseases
- Enhances athletic performance
- Chronic fatigue syndrome
- Fibromyalgia
- And much, much more



Experience it today!

gift vouchers available for Christmas

To book phone Sara 027 488 0200
83 Tyrone Street Ranfurly

LOCAL SQUASH TOURNAMENT

Last month the Maniototo hosted nearly 50 competitors in the first tournament held locally in about 20 odd years. There were players from Balclutha, Invercargill, Dunedin, Cromwell, Alexandra and Omapau.

The tournament was very lucky to secure a major sponsor, Wilson Contracting and other great support from local businesses. A tournament committee of Kyle Hagen, Sam Blakely, Quinton Smith, Jenna Huddleston, Kelly Smith and Becky McAuley was formed.

"The club has a great vibe at the moment, a lot of new players learning the sport, with the more experienced members putting so much time into helping the new members. It's so important in a rural community to have these clubs running. It really caters for all levels and just having a place to catch up weekly after having a run around is what it's about. To hold such a successful tournament with the feedback so positive it's sure to be a great annual event. Hosting such a tournament with a great committee and club is so easy," says Club Secretary Becky.



Sam Blakely tends to the spit at the recent Squash Tournament.



Kirsty Sloan and Peter Cheesmur battle it out in the Grade 5 final. Peter was the only local to win his division.



Rural fuel delivery

Otago bulk fuel supply, second to none

Farm and rural residents can rely on RD Petroleum's premium delivery service for bulk fuel supply that is fast, efficient, cost effective and delivered on time, every time.

Experience the RD Petroleum difference.



South Island wide | 0800 44 00 14 | www.rdp.co.nz

MANIOTOTO CONTRACTING

(2004) Ltd

IAN AND JUDY HORE

HAY • SILAGE • BALEAGE • MOWING • FEED SALES

DRILLING • EARTHMOVING • CULTIVATION

Yard: 20 Mitchell St, Ranfurly
P.O. Box 10, Wedderburn, 9355
Phone: 027 221 9803
ian.maniototo@gmail.com




STEELE FENCING LTD

LUKE STEELE
0274859823
RANFURLY

FOR ALL YOUR FENCING NEEDS
THROUGHOUT CENTRAL OTAGO

steelefencing@hotmail.com

CLACHANBURN COMMENT

It seems no time since my last comment, a busy month in the garden and visitors have kept us on our toes. The weather appears to have settled at last and hopefully we can enjoy summer.

A couple of weeks ago our garden club enjoyed a wonderful late afternoon wander around some Ranfurly gardens. I was surprised that the sections in town are so large, I think I heard a ¼ of an acre and invariably a large area at the rear, which is mainly unseen from the road, and what surprises did we see? A wide range of plants both edible and ornamental!

Local gardeners are good gardeners, they know and understand how to work with our elements, and it was great to see so many new out of town people there too. It is the very best way to understand what they have come to, and gardeners like to share their knowledge, so welcome, and we hope to see you again soon.

A question from many was "*Maurice, do you measure the space between your carrots?*" They were perfect to within a millimetre! Your veggies were greatly admired

With the wet weather we have had, I hear the words spittle bugs and aphids so watch out for them, also rabbits and different ways to deter them – some recommend putting blood and bone around veggies and roses, another I was told of recently is spent coffee beans.

Do your own research and ask around. Out on the farm I rely on a man with a gun and authorised night shoots. At the present moment, fingers crossed, they are not too bad, but having said that a few lettuce leaves have been munched on.

This last weekend I was fortunate enough to join up with the Dunedin Rose Heritage Society, and go on a bus to Te Anau, visiting some very lovely gardens on the way. It was a good friendly group of gardeners, and of course someone usually knew the name of all the roses. A wide variety of gardens in size, style and planting, plants mainly which we can grow, but the huge difference being that they can have a mature very well established garden within 20 years. I don't think that is achievable here, with our harsh climate.

To all readers a Happy Xmas and good wishes for 2020
Jane





POSITIVELY MANIOTOTO MONTHLY BUSINESS DIRECTORY



WAIPIATA COUNTRY HOTEL

Owners Mark and Nikki welcome you

**FRIDAY NIGHT
\$12 SPECIAL**

**Sirloin steak and chips
Snapper and chips
(both served with salad)
Gourmet pizzas**

PH 444 9470



BRING HOME
fast, easy
beautiful mowing



Test the new Walker R21 - still uncompromised essence of a Walker Mower

*TERMS & CONDITIONS: Payments include \$70 Establishment Fee and \$180 Monthly Service Fee.
Offer available Jan. July 2019-30 June 2020. Normal lending and credit criteria apply.

You could own a walker R21 Mower
for as little as \$106 per week/3 years.

finance
NOW

CLAAS Harvest Centre

18 Stack St, Allanton. (03) 489 8886
156 Ballantyne Rd, Wanaka. (03) 443 6781

CLAAS



Jade Atherton Plumbing Ltd

We have a Ranfurly based Plumber/Gasfitter

Gas Hot Water Conversions

Repairs and Maintenance

Renovations/Alterations

New Builds

**Please contact us by phone,
e-mail or via our website**

M: 021 664 408 P: 03 447 3333

E: jade.atherton@gmail.com

W: www.jadeathertonplumbing.co.nz



Plumbing

Gasfitting

Drainlaying

Mechanical Services

FOLEYS

ABOVE & BEYOND
EVERY TIME

Royce, Ben and Jacob are available for
all your plumbing, drainage and
gasfitting. Ranfurly-based and servicing
the greater Maniototo area.

Phone us on
0800 30 35 30 or visit
www.foleys.co.nz

GRAHAM ELECTRICAL LTD

**Contracting, appliance sales and
service since 1954**

Shop 444 9314 **Doug** 027 438 8380

Rob 027 447 8627 **Nic** 027 330 4605

grahamelectrical@xtra.co.nz

FUJITSU Haier

Fujitsu and Haier air conditioning

**Fisher & Paykel Appliances,
Panasonic TVs**



**HOME TO SELL?
LOOKING FOR YOUR
PERFECT HOME?**

We can help you!

HELEN FLINTOFF

Residential & Lifestyle Sales
027 367 4063
helen.flintoff@southernwide.co.nz

Contact Helen for your free no obligation
appraisal

**SOUTHERN WIDE
REAL ESTATE**
SRM REALTY LTD LICENSED REAA 2008

Your community calendar
+ a few extras!



The Burn Budget



10 Pery Street, Ranfurly
burn729am@gmail.co.nz
444 9729

WHAT'S ON BURN AND WHEN - 729am / 87.9fm

OFS Insurance Brokers Ltd Road Reports, Cancellations & Water Notices	Top of the hour 6am - 10am
Waipiata Country Hotel Weather Updates	Top of the hour 6am - 6pm
Tussock Networks Ltd News Updates	Top of the hour 6am - 6pm
Burn Daily Calendar	8.45am, 11.15am and 3.15pm weekdays
Maniototo Sheep Handling Buy, Sell and Swap	9.30am, 11.30am and 3.30pm weekdays
Vet Centre Community Notices	10.30am, 2.30pm and 5.30pm weekdays
The Country with Jamie Mackay	12noon - 1pm weekdays
Monday Night Memories	7pm - 9pm Mondays
Vincent George Travel 70s & 80s Music:	6pm - 8pm Tuesdays
Country Show	6pm - 8pm Wednesdays and 9am - 12 noon Sundays
Rock Show	6pm - 8pm Thursdays
Combined Churches Choices	8am - 9am Sundays
McLaren Ranfurly Transport Ltd Sports Round Up	9.30am Sundays

For all notices placed in *Buy, Sell & Swap*, *Live* and *Community Notices* for individuals or groups, a gold coin donation would be very much appreciated (other than community groups who already make an annual donation). Thanks

MONDAYS

Ranfurly Karate Club:	Maniototo Arts Centre, 6-7.30pm. All new and graded members welcome. 444 9831
Pilates:	6-7pm, MAS Maniototo Learning Centre. 6 - 7pm. Contact 021 165 4872
Scrap booking & card making	10.30am at the Reade Street Art Centre. Contact Sandra on 027 847 5643
Monday Night Memories:	Burn 729am / 87.9fm 7-9pm, 444 9729

TUESDAYS

Maniototo Golf Club:	Ladies golf, Competition of the Day. Tee off 11am. All welcome
Steady As You Go Classes:	10.30am, Maniototo Stadium Rugby Club Rooms. Call Joan 444 9629, Karen 444 9814 or Maureen 444 9493
70s and 80s Music:	Burn729am / 87.9fm. 6 - 8pm

WEDNESDAYS

Tai Chi:	Classes 10 - 11am. Maniototo Arts Centre. Inquiries 444 9831
Catholic Women's Fellowship:	Op Shop. Open 10.30am - 4.30pm. Contact Francie on 444 9243
Line Dancing:	Arts Centre @ 3:30pm - 4:30pm. Contact 444 9612
Maniototo Bridge:	7pm Wallace Memorial Rooms. Visitors and new members welcome. Call Ang on 021 063 6630 or Judy Elder on 444 9798
Pilates:	6-7pm, MAS Maniototo Learning Centre. 6 - 7pm. Contact 021 165 4872
Country Show:	Burn729am / 87.9fm. 444 9729 from 6pm
Singing Group:	7pm at Maniototo Arts Centre. Call Sandra on 027 421 1076 for info.

THURSDAYS

Ballet:	3pm - 7.30pm depending on age group. Ph Jemma Robertson 027 314 6595.
Rock Show:	Burn 729am. 6pm - 8pm. 444 9729

FRIDAYS

Art group:	10.30am at the Reade Street Art Centre. Contact Colin on 020 4118 8971
Catholic Women's Fellowship:	Op Shop. Open 10.30am- 4.30pm. All welcome. Contact Francie on 444 9243
Ranfurly Playcentre:	9.30am-12noon. Call Jenny on 021 158 4698

SATURDAYS

Maniototo Golf:	Tee off 12.45pm. Contact Club Captain - Alan 444 9129
-----------------	---

SUNDAYS

Maniototo Toy Library :	1.30 - 2.30pm - Pipe Band Rooms, Ranfurly. Contact Jamee Howell 027 473 6941
Presbyterian Church:	10am Family Church Service at Ranfurly
Sunday School:	Presbyterian Church. For details - Call Ro on 444 4700
Naseby Golf:	Club Competition. 12.30 Tee off. Contact Carol 444 9949
Catholic Church:	5pm Mass, Sacred Heart Catholic Church, Stuart Road, Ranfurly
Choices:	8am - 9am. Burn729am/87.9fm
Country Show:	9am - 12 Noon. Burn729am/87.9fm

Maniototo Spinners	2nd and 4th Monday	10am - 3pm	Tracey 027 654 1977 or Karen 444 9814
Plunket Playgroup	1st Monday	10am-12noon	Sarah 444 8284
Te Kakano	2nd Wednesday	From 10am	Maniototo Hospital 444 9420
Business Breakfast	3rd Wednesday	8am - 9am	Morgan on 444 9023
Garden Club	1st Thursday	7.30pm	Mary Wright 444 9435
St Hilda's Anglican Church	1st Sunday	10.30am	St Hilda's Church, Ranfurly

